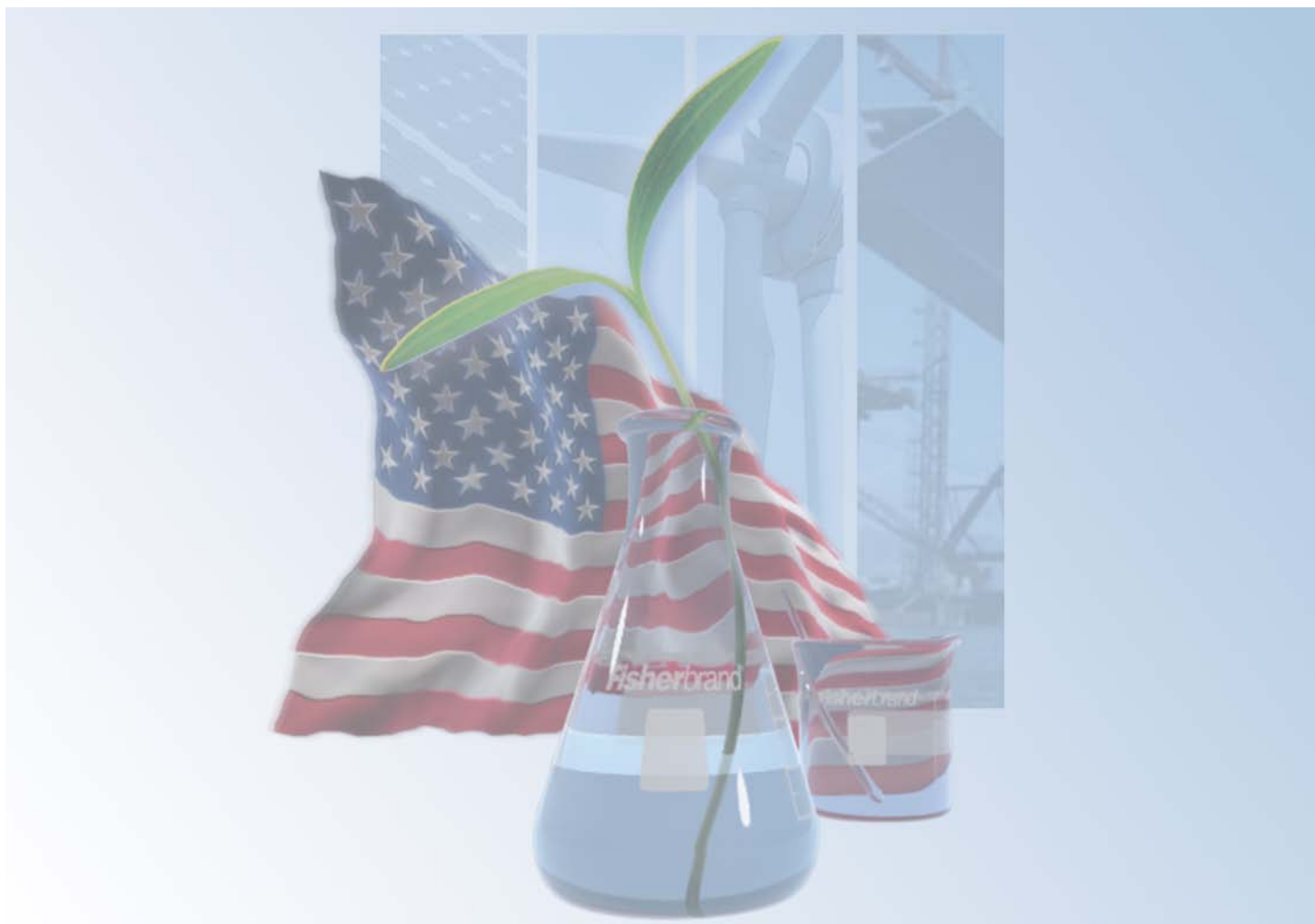




ARRA Stimulus Product Guide

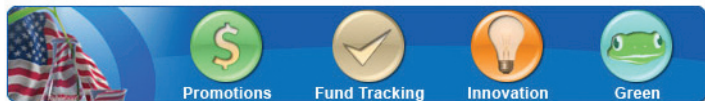
Tel: 1-800-766-7000 Fax: 1-800-926-1166 Web: www.fishersci.com



STIMULUS TOP 10

Putting Your Stimulus Dollars to Work!

TOOLBOX:



MUST-HAVES

The ways and means to make the most of your ARRA monies.

Promotions (Make Every Dollar Count)

Fund Tracking (Manage Funds with E-Commerce)

Innovation (Accelerating Life Science Research)

Green (Think Green Suppliers & Products)

PEOPLE:

MASS SUPPORT

Partnering with Fisher Scientific, part of Thermo Fisher Scientific, saves and creates jobs. We have 20,000 employees in the U.S. who manufacture, service and support the products used in the development of future technologies and industries.

FESTIVITIES:

ROAD SHOW

Get ready for Activate Science Day, the action-packed extravaganza—filled with demonstrations, presentations, exclusive promotions and product introductions—coming soon to a lab near you.



SEMINARS/WEBINARS:

CURRENT EVENTS

Keep up with the latest and greatest in the lab, with Fisher Scientific's informational offerings. Ask your sales representative for dates and times.



INNOVATION: CUTTING-EDGE

Fisher Scientific is your first-to-market source for Life Science applications: stem cell research, cell culture, genomics, proteomics and more.



DESIGN OF THE TIMES

Rally your troops around the recovery with our patriotic poster saluting your efforts to preserve and create U.S. jobs.

FUND TRACKER:

HISTORY IN THE MAKING

The ultimate tool for fund management. This e-commerce efficiency standard facilitates the creation of accounts, assignment of user privileges, and tracking of monies in and out—with total transparency. Receive email alerts, transaction histories and reconciliation reports in real time. Place your Orders Electronically with Fisher Scientific!

PROMOTIONS:



SUPPLY-SIDE ECONOMICS

Stretch those stimulus dollars with special savings from Fisher Scientific and its industry-leading suppliers. Check out our New Lab Start-Up Program: You provide the science and leave the lab to us!

LEASE:

WAITING FOR YO' DOUGH

Consider Thermo Fisher Scientific's Future Funds Program to get the products and services you need NOW with the grant you'll receive LATER.

GREEN:

THINK
GREEN



COLOR OUR WORLD

Investing for the future requires an investment in the future. For sustainable solutions and green product offerings, hop on over to Think Green at www.fishersci.com.

Table of Contents

Equipment	1	Single Channel Manual Pipetters [Fixed Volume].....	16
Baths.....	1	Single Channel Manual Pipetters [Variable Volume].....	16
Shaking Baths.....	1	Power Supplies.....	17
Water Baths.....	1	Refrigerators and Freezers.....	17
Blenders.....	2	Freezers.....	17
Immersion Blenders [Mechanical].....	2	Refrigerators and Refrigerator Freezers - Full Size.....	17
Centrifuges.....	2	Refrigerators and Refrigerator Freezers - Undercounter.....	19
Benchtop Centrifuges.....	2	Ultra Low Temperature Freezers [Upright].....	20
Floor Model Centrifuges.....	3	Robotic Systems.....	20
Microcentrifuges.....	3	Robotic Automation Upgrade.....	20
Counting Devices.....	4	Shakers.....	20
Counters for Microbiology.....	4	Platform Shakers [Incubated].....	20
Robotic Microplate Handling Systems.....	4	Platform Shakers [Orbital].....	20
Cryogenic Products.....	4	Platform Shakers [Rocking].....	21
Cryogenic Systems.....	4	Platform Shakers [Rotating].....	21
Dispensers [Automated Liquid].....	4	Vortex Shakers.....	21
Pipetting Workstations.....	4	Slide Stainers.....	22
DNA Sequencing Systems.....	5	Sterilizers and Autoclaves - Benchtop.....	22
Electrophoresis Systems.....	5	Stirrers.....	22
Blotting Apparatus.....	5	Magnetic Stirrers.....	22
Horizontal Gel Systems.....	5	Transilluminators.....	22
Vertical Gel Systems.....	6	Instruments	22
Electrophoresis System Accessories and Replacement Parts.....	6	Balances.....	22
Evaporators.....	8	Balances - Analytical.....	22
Centrifugal Evaporators.....	8	Balances - Electronic Toploading.....	23
Hoods and Enclosures.....	8	Moisture Balances.....	25
Fume Hoods.....	8	Balance Accessories.....	25
Laminar Flow.....	8	Chromatography Equipment.....	25
Hotplates.....	9	Gas Chromatographs.....	25
Standard Heating Hotplates.....	9	Dispensers [Automated Gas].....	26
Stirring Hotplates.....	9	Electrochemistry.....	26
Incubators.....	11	Conductivity Meters - Benchtop.....	26
Carbon Dioxide Incubators.....	11	Conductivity Meters - Portable.....	26
Incubators Accessories.....	11	Dissolved Oxygen Meters - Benchtop.....	26
Label and Sign Making Machines.....	11	Dissolved Oxygen Meters - Portable.....	26
Microplate Washers.....	12	Multiparameter Meters - Benchtop.....	27
Microscopes.....	12	pH Meters - Benchtop.....	27
Compound Microscopes - Inverted.....	12	pH Meters - Portable.....	28
Compound Microscopes - Upright.....	12	Titrators.....	28
Stereo Microscopes.....	13	Electrodes.....	28
Microscope Replacement Parts.....	13	pH ORP Titration - Combination.....	28
Molecular Biology Kits.....	13	Fluorometers and Fluorescence Polarization Systems.....	28
Ovens.....	14	Microplate Readers.....	28
Convection Ovens.....	14	Spectrometers.....	29
Vacuum Ovens.....	14	Spectrophotometers.....	30
Photodocumentation Systems.....	15	Spectrophotometer and Colorimeter Accessories.....	31
Pipetters - Manual.....	15		
Multichannel Manual Pipetters [Fixed Volume].....	15		
Multichannel Manual Pipetters [Variable Volume].....	15		

Table of Contents

Attachments and Interface Boards.....	31
Cell Holders.....	31
Software and Program Packs.....	31
Thermal Cyclers.....	31
Furniture.....	31
Chairs and Stools.....	31

Equipment

Baths

Shaking Baths

Thermo Scientific Lab-Line Reciprocating Shaking Baths



14-280-45 - Ea./\$4,453.00
Shaking Water Bath, Analog Reciprocal; Thermo Scientific Lab-Line ; 15 to 250 oscillations/min., temperature control from above ambient to 65°C (98°C with optional gable cover), control and uniformity of ±0.1°C at 37°C.

Thermo Scientific MaxQ 7000 Water Bath Orbital Shaker



11-675-941 - Ea./\$5,798.00
Shaker, Water Bath; Thermo Scientific MaxQ 7000; Analog; Speed 40 to 400 rpm; 5°C above ambient to 65°C; Timer Continuous or from 1 to 60 min.; 120V 50/60Hz

Water Baths

Fisher Scientific HiTemp Bath



11-481Q - Ea./\$1,282.69
Baths, Open; Fisher Scientific; HiTemp; Factory-calibrated temperature control; Maintains bath constancy to ±2°C; Insulated cabinet; Spill control; Acrylic enamel lined cabinet; Power requirement: 120 V 50/60Hz, 11A; 5L capacity

Fisher Scientific Isotemp Digital-Control Water Baths



15-462-2Q - Ea./\$860.10
Bath, General Purpose, Fisher Scientific; Isotemp Digital Model 202; 2L capacity; PID control, ambient to 100°C, plus or minus 0.24°C uniformity, plus or minus 0.5°C accuracy/stability at 37°C
15-462-2SQ - Ea./\$884.35
2L capacity; Hinged acrylic cover; 120V 50/60Hz, 1.7A; Shallow Form;
15-462-S2Q - Ea./\$932.23
2L capacity; Hinged stainless-steel cover; 120V 50/60Hz, 1.7A
15-462-S2SQ - Ea./\$1,059.99
2L capacity; Hinged stainless-steel cover; 120V 50/60Hz, 1.7A; Shallow Form
15-462-5Q - Ea./\$977.23
5L capacity; Hinged acrylic cover; 120V 50/60Hz, 2.5A
15-462-S5Q - Ea./\$1,164.00
5L capacity; Hinged stainless-steel cover; 120V 50/60Hz, 2.5A
15-462-10Q - Ea./\$1,115.96
10L capacity; Hinged acrylic cover; 120V 50/60Hz, 5.8A
15-462-S10Q - Ea./\$1,340.46
10L capacity; Hinged stainless-steel cover; 120V 50/60Hz, 5.8A
15-462-20Q - Ea./\$1,430.82
20L capacity; Hinged acrylic cover; 120V 50/60Hz, 8.3A
15-462-S20Q - Ea./\$1,506.47
20L capacity; Hinged stainless-steel cover; 120V 50/60Hz, 8.3A
15-462-28Q - Ea./\$1,889.91
28L capacity; Hinged acrylic cover; 120V 50/60Hz, 8.3A
15-462-S28Q - Ea./\$1,930.89
28L capacity; Hinged stainless-steel cover; 120V 50/60Hz, 8.3A

15-462-15Q - Ea./\$1,908.81
Dual 5L/10L capacities; Hinged acrylic cover; 120V 50/60Hz, 8.3A
15-462-S15Q - Ea./\$2,003.36
Dual 5L/10L capacities; Hinged stainless-steel cover; 120V 50/60Hz, 8.3A

Fisher Scientific Isotemp Economy Analog Control Water Baths



15-460-2Q - Ea./\$613.07
Bath, General Purpose, Fisher Scientific; Isotemp Analog-Control Water Bath Model 102; 2L capacity; ambient +5°C to 85°C, to 100°C with cover; Uniformity/Stability, ±0.2°C at 37°C; With acrylic cover; 120V 50/60Hz, 1.7A
15-460-2SQ - Ea./\$608.83
2L capacity; 120V 50/60Hz, 1.7A; With acrylic cover; Shallow form
15-460-S2Q - Ea./\$756.56
2L capacity; 120V 50/60Hz, 1.7A; With stainless-steel cover
15-460-S2SQ - Ea./\$749.20
2L capacity; 120V 50/60Hz, 1.7A; With stainless-steel cover; Shallow form
15-460-5Q - Ea./\$744.96
5L capacity; 120V 50/60Hz, 2.5A; With acrylic cover
15-460-S5Q - Ea./\$895.84
5L capacity; 120V 50/60Hz, 2.5A; With stainless-steel cover
15-460-10Q - Ea./\$895.86
10L capacity; 120V 50/60Hz, 5.8A; With acrylic cover
15-460-S10Q - Ea./\$1,072.57
10L capacity; 120V 50/60Hz, 5.8A; With stainless-steel cover
15-460-20Q - Ea./\$1,056.84
20L capacity; 120V 50/60Hz, 8.3A; With acrylic cover
15-460-S20Q - Ea./\$1,073.64
20L capacity; 120V 50/60Hz, 8.3A; With stainless-steel cover
15-460-28Q - Ea./\$1,285.86
28L capacity; 120V 50/60Hz, 8.3A; With acrylic cover
15-460-S28Q - Ea./\$1,287.93
28L capacity; 120V 50/60Hz, 8.3A; With stainless-steel cover
15-460-15Q - Ea./\$1,710.25
Dual chamber 5L/10L capacity; 120V 50/60Hz, 5.8A; With acrylic cover
15-460-S15Q - Ea./\$1,889.91
Dual chamber 5L/10L capacity; 120V 50/60Hz, 8.3A; With stainless-steel cover

Fisher Scientific Isotemp Open Baths



13-873-10 - Ea./\$565.61
Baths; Open; Fisher Scientific; Isotemp; Stainless steel; Nonrefrigerated; Capacity 3.4 gal. (13L); 11.6L x 9.4W x 8.4 in. D (14 x 24 x 21cm) reservoir; 13.2L x 10.6W x 9 in. H (33.5 x 27 x 23cm) overall; Scratch-resistant exterior coating
13-873-11 - Ea./\$801.45
Stainless steel; Unrefrigerated; Capacity 7.38 gal.
13-873-12A - Ea./\$2,025.72
Stainless Steel; Refrigerated; Capacity 3.38 gal.
13-873-13 - Ea./\$196.54
Acrylic; Capacity 2.1 gal.
13-873-14 - Ea./\$212.88
Acrylic; Capacity 4.2 gal.
13-873-15 - Ea./\$321.21
Acrylic; Capacity 5.5 gal.

Boekel Illuminated Tissue Preparation Baths

12-592-200 - Ea./\$1,143.10
Bath, Tissue Preparation; Boekel; Analog Model 145701; Temperature to 60°C; Lighted black high-visibility background; With removable Pyrex dish; 13.5 x 15.5 x 4.5 in.; 115V 50/60Hz, 600w
12-592-201 - Ea./\$1,555.00
Deluxe Digital Model 145950, 115V 50/60Hz, 350w

Blenders

Immersion Blenders [Mechanical]

Fisher Scientific PowerGen Cryogenic Homogenizer



02-215-500 - Ea./\$1,035.00
Cryogenic Homogenizer; Fisher Scientific; PowerGen; 115V
02-215-501 - Ea./\$217.27
6 Pestles
02-215-502 - Ea./\$550.80
Tray with 6 replacement mortars and 6 pestles

Fisher Scientific PowerGen High Throughput Homogenizer



02-215-503 - Ea./\$6,654.00
Homogenizer; Fisher Scientific PowerGen; High Throughput; Grinds seeds, bone and other hard tissues; Speed range 500-1500rpm; Capacity 96mL [24 x 4mL vials]; Back-and-forth motion; 120V 60Hz

Fisher Scientific PowerGen Model 125 Homogenizer



14-261-02 - Ea./\$951.06
Homogenizer, Fisher Scientific PowerGen; Model 125; Unit-Only; 115V 60Hz, 125w; Includes: Homogenizer, manual, power cord and tools; Volume range (for water) 0.03 to 100mL; Speed range 8000-30,000rpm; Stepless speed control; scale display; 1-1/8 lb.
14-261-02P - Ea./\$4,588.41
Package; 115V 60Hz
14-261-02S - Ea./\$211.30
Base Stand, For PowerGen 125

Fisher Scientific PowerGen Model 500 Homogenizer



14-261-04 - Ea./\$1,034.38
Homogenizer, Fisher Scientific PowerGen; Model 500; Unit-Only; 115V 60Hz, 500w; Volume range (for water) 0.03 to 5mL; Speed range 6500-24,000rpm; Stepless speed control; scale display; 3-1/2 lb.
14-261-04P - Ea./\$5,304.52
Package; 115V 60Hz
14-261-04S - Ea./\$218.68
Stand Assembly for PowerGen 500 Homogenizer

Fisher Scientific PowerGen Model 1000 Homogenizer



14-261-06 - Ea./\$1,432.22
Homogenizer, Fisher Scientific PowerGen; Model 1000; Unit-Only; 115V 60Hz, 1050w; Volume range (for water) 0.03mL-10L; Speed range 7500-30,000rpm; Stepless speed control; scale display; 5-3/4 lb.
14-261-06P - Ea./\$5,941.06
Package; 115V 60Hz

Fisher Scientific Tissuemiser Homogenizer



15-338-420 - Ea./\$1,041.60
Homogenizer; Fisher Scientific Tissuemiser; 115V 50/60Hz, 125w

Centrifuges

Benchtop Centrifuges

Thermo Scientific Sorvall Legend X1 Centrifuge Packages

75-218-382 - Ea./\$5,450.00
Centrifuge Package, Benchtop; Thermo Scientific; Sorvall Legend X1; For Cell Culturing; Includes: X1 ventilated centrifuge (1L capacity, 120V 60 Hz); TX-400 Swinging Bucket Rotor; 4 times (multiply) 400mL Round Buckets; 4 times (multiply) 50mL conical ada
75-612-963 - Ea./\$7,950.00
Sorvall X1R Package (Refrigerated) w/ High-Performance Carbon Fiber Rotor
75-618-382 - Ea./\$6,750.00
Sorvall X1R Cell Culture Package (Refrigerated)

Thermo Scientific Sorvall Legend XT and Sorvall ST 40 Series Centrifuge Packages



75-060-817 - Ea./\$7,250.00
Centrifuge Package, Benchtop; Thermo Scientific; Sorvall Legend XT (Nonrefrigerated), 3L Capacity; Max. Speed/RCF 15,200rpm/25,314 x g; 120V 60Hz
75-063-839 - Ea./\$7,750.00
Sorvall Legend XT Standard Cell Culture Package
75-101-923 - Ea./\$6,950.00
Sorvall ST 40 Standard Blood Processing Package
75-103-839 - Ea./\$6,950.00
Sorvall ST 40 Standard Cell Culture Package
75-107-271 - Ea./\$6,450.00
Sorvall ST 40 BIOLiner Blood Processing Package
75-107-473 - Ea./\$6,450.00
Sorvall ST 40 BIOLiner Cell Culture Package
75-210-061 - Ea./\$9,950.00
Sorvall Legend XTR High-Performance Package with Fiberlite F13S-14x50c Rotor
75-210-062 - Ea./\$9,950.00
Sorvall Legend XTR High-Performance Package with Fiberlite F14S-6x250LE Rotor

75-210-063 - Ea./\$9,950.00
Sorvall Legend XTR High-Performance Package with Fiberlite F15-8x50c Rotor
75-210-817 - Ea./\$8,895.00
Sorvall Legend XTR Microplate Blood Processing Package
75-213-839 - Ea./\$9,450.00
Sorvall Legend XTR Standard Cell Culture Package
75-236-362 - Ea./\$11,900.00
Sorvall Legend XTR High-Performance Package with Fiberlite F15-8x50c and F14S-6x250LE Rotors
75-251-923 - Ea./\$8,750.00
Sorvall ST 40R Standard Blood Processing Package
75-253-839 - Ea./\$8,750.00
Sorvall ST 40R Standard Cell Culture Package
75-257-271 - Ea./\$8,250.00
Sorvall ST 40R BIOLiner Blood Processing Package
75-257-473 - Ea./\$8,250.00
Sorvall ST 40R BIOLiner Cell Culture Package

Thermo Scientific Sorvall Legend XT Centrifuge Series



75-004-506 - Ea./\$7,181.00
Centrifuge, Benchtop; Thermo Scientific; Sorvall Legend XT (Nonrefrigerated), 3L Capacity; Max. Speed/RCF 15,200rpm/25,314 x g; 120V 60Hz
75-004-521 - Ea./\$10,251.00
Sorvall Legend XTR (Refrigerated), 120V 60Hz

Thermo Scientific Sorvall ST 16 Centrifuge Series

75-004-241 - Ea./\$4,116.00
Centrifuge, Benchtop; Thermo Scientific; Sorvall; ST 16; Capacity 4 x 400mL; Max. Speed/RCF 15,200rpm/25,830 x g; Ventilated; 120V 60Hz
75-004-381 - Ea./\$6,074.00
ST 16R; Refrigerated; 120V 60Hz

Thermo Scientific Sorvall ST 16 Centrifuge Series Packages

75-410-885 - Ea./\$3,950.00
Centrifuge; Thermo Scientific; Sorvall ST 16; Capacity 4 x 400mL; Max. Speed/RCF 15,200rpm/25,830 x g; Ventilated; 120V 60Hz, Clinical Entry Level Package
75-412-452 - Ea./\$3,798.08
Sorvall ST 16 (ventilated) Centrifuge 120V, Microplate Package
75-418-180 - Ea./\$4,950.00
Sorvall ST 16 (ventilated) Centrifuge 120V, Clinical High-Capacity Package
75-810-885 - Ea./\$5,450.00
Sorvall ST 16R (refrigerated) Centrifuge 120V, Clinical Entry Level Package
75-812-452 - Ea./\$5,450.00
Sorvall ST 16R (refrigerated) Centrifuge 120V, Microplate Package
75-818-180 - Ea./\$6,450.00
Sorvall ST 16R (refrigerated) Centrifuge 120V, Clinical High-Capacity Package

Thermo Scientific Sorvall ST 40 Centrifuge Series



75-004-510 - Ea./\$6,150.00
Centrifuge, Benchtop; Thermo Scientific; Sorvall; ST 40; Capacity 4 x 750mL; Max. Speed/RCF 15,200rpm/25,314 x g; Ventilated; 120V 60Hz
75-004-525 - Ea./\$8,551.00
ST 40R, Refrigerated, 120V 60Hz

Floor Model Centrifuges

Thermo Scientific Sorvall HT6 Centrifuge



11-178-191 - Ea./\$27,627.69
Centrifuge, Floor; Thermo Scientific; Sorvall HT6; Capacity 6L [6x1000mL]; Max. Speed/Force 4250rpm/5735xG (Variable ctrl); Refrig; Temp range -8°C to +40°C; 24 mem; 10 accel/10 brake rates; VIDEOSet graphic display; 99 hr., 59 sec. plus HOLD tim

Thermo Scientific Sorvall Legend XF Centrifuge Series

75-004-533 - Ea./\$8,963.00
Centrifuge, Floor Model; Thermo Scientific; Sorvall Legend XF (Nonrefrigerated), 3L Capacity; Max. Speed/RCF 15,200rpm/25,314 x g; 120V 60Hz
75-004-539 - Ea./\$11,281.00
Sorvall Legend XFR (Refrigerated), 120V 60Hz

Microcentrifuges

Fisher Scientific accuSpin Micro 17/Micro 17R Centrifuges



13-100-675 - Ea./\$1,800.00
Microcentrifuge; Fisher Scientific accuSpin; Micro 17; Ventilated; Cap. 24 x 1.5/2.0mL; Max. Speed/Force 13,300rpm/17,000xG; LED display; Variable speed/rcf control; Timer (1 min. to 99 min.); w/24-place rotor and bio lid; 9.5L x 8.9W x 13.8 in.H; 120V 60
13-100-676 - Ea./\$5,000.00
Refrigerated

Thermo Scientific Sorvall Legend 23R Centrifuge



00554 - Ea./\$7,600.00
Centrifuge; Thermo Scientific Sorvall Legend 23R; Capacity 800mL [4x200mL]; Max. Speed/Force 23,000rpm/36,668 x g; Refrigerated; Temp range -8°C to +40°C; AutoLock quick rotor change; 25L x 23W x 14.75in.H; Net Wt. 187 lb.; 120V 60Hz

Thermo Scientific Sorvall Legend Micro 17 and 21 Microcentrifuge Series



75-002-431 - Ea./\$2,000.00
Microcentrifuge; Thermo Scientific; Sorvall Legend Micro 17; Ventilated; Includes 24 x 1.5/2.0mL rotor w/ Bio lid; Max speed 13,300rpm; Max. force 17,000xG; 99 min. timer; 120V 60Hz
75-002-436 - Ea./\$2,400.00
Sorvall Legend Micro 21 with 24 x 1.5/2.0mL rotor and lid; 120V 60Hz
75-002-441 - Ea./\$5,500.00
Sorvall Legend Micro 17R with 24 x 1.5/2.0mL rotor and biocontainment lid, 120V 60Hz
75-002-446 - Ea./\$6,000.00
Sorvall Legend Micro 21R with 24 x 1.5/2.0mL rotor and lid; 120V 60Hz
75-002-488 - Ea./\$2,750.00
Sorvall Legend Micro 21 with 24 x 1.5/2.0mL rotor and dual 18 x 0.5mL/18 x 2.0mL rotor; 120V 60Hz
75-002-490 - Ea./\$6,500.00
Sorvall Legend Micro 21R with 24 x 1.5/2.0mL rotor and dual 18 x 0.5mL/18 x 2.0mL rotor; 120V 60Hz
75-002-494 - Ea./\$2,100.00
Sorvall Legend Micro 17 with hematocrit rotor, 120V 60Hz

Eppendorf Model 5415R Microcentrifuges

05-413-101 - Ea./\$5,500.00
Microcentrifuge; Eppendorf Model 5415R; With 24 x 1.5/2.0mL Fixed-angle Rotor; 120V
05-413-103 - Ea./\$7,019.50
30 x 1.5/2.0mL Fixed-angle Rotor

Eppendorf Model 5424 Microcentrifuges

05-413-104 - Ea./\$2,660.00
Microcentrifuge; Eppendorf Model 5424 (rotary knob version); With 24 x 1.5/2.0mL Aerosol-tight rotor and 18-place spin column rotor; 120V
05-413-200 - Ea./\$2,300.00
Knob value pack
05-423-117 - Ea./\$3,100.00
Keypad version

Eppendorf Model 5430/5430R Microcentrifuges

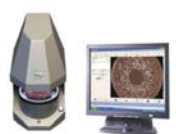


05-403-94 - Ea./\$4,300.00
Microcentrifuge; Eppendorf; Model 5430; Keypad Control; Capacity 60mL (30 x 2.0mL); Max. Speed/RCF 17,500rpm/30,130xG; Includes 30 x 2.0mL Aero-tight Rotor; 120V 60Hz
05-400-016 - Ea./\$4,595.00
With 24xSpin Column Kit Aerosol-tight Rotor, 120V 60Hz
05-400-017 - Ea./\$5,120.00
With 2-Place Microplate Rotor, 120V 60Hz
05-400-018 - Ea./\$3,500.00
Without Rotor, 120V 60Hz
13-690-000 - Ea./\$4,300.00
Knob; With 30x1.5/2.0mL Aerosol-tight Rotor, 120V 60Hz
13-690-002 - Ea./\$4,595.00
Knob Kit; With 24xSpin Column Kit Aerosol-tight Rotor, 120V 60Hz
13-690-003 - Ea./\$5,120.00
Knob; With 2-Place Microplate Rotor, 120V 60Hz
13-690-004 - Ea./\$3,500.00
Knob; Without Rotor, 120V 60Hz

Counting Devices

Counters for Microbiology

Neutec Flash and Grow Automatic Colony Counter



14-910-311 - Ea./\$9,980.34
Colony Counter; Microbiology; Neutec; Flash and Grow; Basic model; 1 sec/plate; Modular; Compact; Counts Pour, Spread and Spiral plates, Filters, 3M Petrifilm; LED for optimal contrast; 110V 60Hz; up to 70W
14-910-312 - Ea./\$5,950.00
Advanced module software upgrade
14-910-323 - Ea./\$3,950.00
Zone Sizing with software upgrade to Advanced module

Neutec Computers for Flash and Grow Automatic Colony Counter

14-910-360 - Ea./\$1,750.00
PC; Dell; Flat Monitor; For use with: Neutec Flash and Grow Colony Counter; with loaded software
14-910-361 - Ea./\$2,150.00
Upgrade to Tablet PC Notebook Touch Screen

Neutec Eddy Jet Automated Spiral Plater



14-910-314 - Ea./\$21,762.00
Inoculating Device; Spiral Plater; Automated; Neutec; Eddy Jet; Programmable; Accuracy and reproducibility of greater than 99%; Disposable, sterile micro-syringe eliminated cross contamination; No vacuum pump

Robotic Microplate Handling Systems

Neutec Robotic Culture Plate Handler



14-910-331 - Ea./\$50,112.00
Robotic Systems, Culture Plate Handling; Neutec Robotic Plate Handler; Counts 240 plates/hour; Hands free; For use with Flash and Grow colony counter; 80-plate carousel; Loads various plate types; Compact; quiet

Cryogenic Products

Cryogenic Systems

Thermo Scientific CryoPlus Storage Systems



TF7400 - Ea./\$8,900.00
Storage System, CryoPlus 1, LN2; Thermo Scientific; 90L; Tank dia. 16 in.; Holds maximum of 6318 2mL vials; 100/120V 50/60Hz, 0.8FLA
TF7402 - Ea./\$11,500.00
200L; Tank dia. 24 in.; Max: 13,000 2mL vials; 100/120V 0.5FLA
TF7404 - Ea./\$17,800.00
340L; Tank dia. 31 in.; Max: 24,000 2mL vials; 100/120V 0.8FLA
TF7406 - Ea./\$22,300.00
552L; Tank dia. 39.5 in.; Max: 38,500 2mL vials; 100/120V 0.8FLA

Dispensers [Automated Liquid]

Pipetting Workstations

BioTek Precision Microplate Pipetting System



BTPRC384 - Ea./\$15,910.00
Pipetting System, Microplate; BioTek; For Microplates; 8-channel Precision; 1 to 120uL per channel; 100 to 240VAC 50/60Hz; Accommodates standard 50 to 250uL pipet tips; and 96- and 384-well flat-, round-, and V-bottom plates
BTPRC384M - Ea./\$18,210.00
8-channel precision w/manifold
BT-PRC384U - Ea./\$21,620.00
8 and 12-channel; Universal precision with manifold
PRC384-12 - Ea./\$18,210.00
12-channel liquid transfer capability; Precision

Neutec Petriswiss PS 20 Automated Petri Dish Filling System



14-910-319 - Ea./\$16,949.00
Filling System; Automated; PetriSwiss PS 20; Delivery rate: 800mL/min.; 44 lb. (20kg); Fill rate: 20/2 min.; 40W; Holds 20 89-96mm petri dishes; Inc. Petr rack, power cord (US)

Neutec Petriswiss PS 900 High Capacity Agar Filler



14-910-320 - Ea./\$30,000.00
Filling System; Agar; Neutec; Petri Swiss PS900; High Capacity; Fills up to 900 plates/hr.; Automatic dish labeling; Selectable dish height; Delivery rate: 600mL/min.; Fill rate: 1100/hour; Power: 80W; 155 lb. (70kg)

Neutec Proficlave PC10 Media Preparator



14-910-317 - Ea./\$23,940.00
Media Preparator; Neutec; Proficlave PC10; Prepares agar from 0.5 up to 9L; Delivery rate: 600mL/min.; Power: 3500W; 110 lb. (50kg)

Neutec Proficlave PC20 Media Preparator

14-910-318 - Ea./\$30,660.00

Media Preparator; Neutec; Proficlave PC20;

DNA Sequencing Systems

FisherBiotech DNA Sequencing System



FB-SEQ-2045 - Ea./\$1,365.49

DNA Sequencing System; FisherBiotech; Gel W x L: 18 x 42cm; Glass Plate W x L: 20 x 45cm

FB-SEQ-3545 - Ea./\$1,715.36

Dna Sequencing System; 35 x 45cm

Electrophoresis Systems

Blotting Apparatus

FisherBiotech Semidry Blotting Apparatus



FB-SDB-2020 - Ea./\$1,000.31

Blotting Apparatus, Semidry; FisherBiotech; 20 x 20cm; 9.75 L x 9.75 W x 2 in. H; 1mA/cm²

Thermo Scientific Pierce Fast Semi-Dry Transfer System



PI35035 - Ea./\$54.27

Buffer; Blotting; Thermo Scientific Pierce; Fast Semi-Dry Transfer Buffer, 10X concentrate; 500mL; Sufficient for 50 mini-gel transfers; Nonhazardous, no methanol; Compatible w/most SDS-PAGE gels; Use w/ nitrocellulose or PVDF membranes

PI88217A - Ea./\$875.50

Electrophoresis Unit

Millipore SNAP i.d. Protein Detection System



WBAVDABTR - Pk. of 20/\$21.00

Blotting Apparatus; SNAP i.d.; Protein Detection System; Antibody Collection Tray

WBAVDBASE - Ea./\$940.00

Base

WBAVDROLL - Ea./\$21.00

Blot Roller

WBAVDBH01 - Pk. of 30/\$242.00

Single Blot Holder; pk. of 30

WBAVDBH011 - Pk. of 60/\$450.00

Single Blot Holder; pk. of 60

WBAVDBH02 - Pk. of 30/\$252.00

Double Blot Holder; pk. of 30

WBAVDBH022 - Pk. of 60/\$461.00

Double Blot Holder; pk. of 60

WBAVDBH03 - Pk. of 20/\$176.00

Triple Blot Holder; pk. of 30

WBAVDBH033 - Pk. of 40/\$318.00

Triple Blot Holder; pk. of 60

Horizontal Gel Systems

FisherBiotech Horizontal Electrophoresis Systems



FB-SB-2025 - Ea./\$735.55

Electrophoresis Systems, Horizontal; FisherBiotech; Large Gel; 20 x 25cm gel size; 2.3L buffer volume; 14-3/4 L x 11 W x 4 in. H; Standard

FB-SBR-2025 - Ea./\$1,001.90

Large Gel; 20 x 25cm gel; 2L buffer volume

FB-SB-2318 - Ea./\$772.66

Wide-Format System; Runs 25 to 250 samples simultaneously

FB-SB-1316 - Ea./\$614.48

Midigel System; Standard; 13 x 16cm gel size; 800mL buffer volume

FB-SBR-1316 - Ea./\$723.77

Midigel System; Recirculating; 13 x 16cm gel size; 800mL buffer volume

FB-SB-710 - Ea./\$450.39

Minigel System; 7 x 10cm gel size; 400mL buffer volume

Thermo Scientific Owl A3-1 Large-Gel Electrophoresis System



OW-A31 - Ea./\$807.75

Horizontal Electrophoresis System, Model A3-1; Thermo Scientific Owl; Gel size: 23 x 40cm; Buffer vol: 4.5L; 53L x 32W x 11cmH; Includes buffer chamber w/ leveling base, lid w/leads, gel tray, 4 combs (two 25- and two 50-well), built-in buffer exchange por

Thermo Scientific Owl C2 Micro Electrophoresis System



09-528-126 - Ea./\$222.49

Horizontal Electrophoresis System, C2 Micro; Thermo Scientific Owl; Buffer chamber and lid only; Gel size: 5 x 7.5cm (glass slides); Buffer volume: 100mL; 17L x 6.5W x 6.5cmH

OW-C2S - Ea./\$288.71

Complete System; Gel size: 5 x 7.5cm; Buffer volume: 100mL; L x W x H: 17 x 6.5 x 6.5cm

Thermo Scientific Owl D2 Wide-Gel Electrophoresis Systems



09-528-165 - Ea./\$581.75

Gel Electrophoresis; D2 Spider Wide-Gel Electrophoresis System; Thermo Scientific Owl; 14.4W x 10.2cmL gel; Footprint 20W x 19L x 10cmH; Running buffer vol. 600mL; Includes: buffer chamber, lid w/ power supply leads, gel tray, gel caster, four combs (two 3

Thermo Scientific Owl D3-14 Horizontal Electrophoresis System



09-528-128 - Ea./\$753.12

Horizontal Electrophoresis System, Model D3-14; Thermo Scientific Owl; Gel size: 23 x 14cm; Buffer vol.: 800mL; 30L x 27W x 11cmH; Includes buffer chamber, lid with attached power cords, UVT gel tray, casting chamber, four combs (50 well, 1.5mm thick)

Thermo Scientific Owl EasyCast Minigel Electrophoresis Systems



09-528-110 - Ea./\$406.92

Electrophoresis System, Horizontal; Thermo Scientific Owl EasyCast; Model B1A; Gel Size: 7W x 8cmL; Buffer Volume 400mL; Complete system includes: buffer chamber, lid w/attached power supply leads, UVT gel tray, 6- and 10-well double-sided combs

OW-B1A-BP - Ea./\$430.77

Gel Size: 7 x 8cm; w/Buffer Exchange Ports; Buffer Volume: 400mL; L x W x H: 6.25 x 4 x 3.75 in.

09-528-110B - Ea./\$516.35

Gel Size: 12 x 14cm; Buffer Volume: 800mL; L x W x H: 9.65 x 7.1 x 3.74 in.

09-528-118 - Ea./\$608.59

Gel Size: 12 x 14cm; w/Buffer Exchange Ports; Buffer Volume: 800mL; L x W x H: 9.65 x 7.1 x 3.74 in.

09-528-178 - Ea./\$444.23

Gel Size: 9 x 11cm; Buffer Volume: 600mL; L x W x H: 8.5 x 5.88 x 3.75 in.

OW-B1-BP - Ea./\$495.40

Gel Size: 9 x 11cm; w/Buffer Exchange Ports; Buffer Volume: 600mL; L x W x H: 8.5 x 5.88 x 3.75 in.

Thermo Scientific Owl Horizontal Gel Systems



09-528-100 - Ea./\$748.16
Horizontal Electrophoresis System, Model A1; Thermo Scientific Owl; Gel Size: 13 x 25cm; Buffer vol: 1.6L; 32.5L x 21.5W x 11cmH; Includes buffer chamber w/ leveling base, lid w/power supply leads, gel tray, gasketed end gates, three 1.5mm thick combs
09-528-100A - Ea./\$824.76
Gel size: 13 W x 25 cm L; Buffer volume 1.6L; L x W x H: 32.5 x 21.5 x 11cm; With buffer exchange ports
09-528-101 - Ea./\$736.44
Gel size: 20 x 25cm; Buffer volume: 2.3L; L x W x H: 32.5 x 28 x 11cm; Without buffer exchange ports
09-528-102 - Ea./\$903.39
Gel size: 20 x 25cm; Buffer volume: 2.3L; L x W x H: 32.5 x 28 x 11cm; With buffer exchange ports

Vertical Gel Systems

FisherBiotech Electrophoresis Bundle



FB-250 - Ea./\$1,000.49
Vertical Electrophoresis System; Electrophoresis Bundle; FisherBiotech; For 10 W x 8 to 10cm L gels plus Mini Tank Electroblotter with 9 x 9cm transfer area; 4 blank and notched glass plates; Two 10-well, 15-well 0.8mm thick combs

FisherBiotech Minigel Vertical Electrophoresis System



FB-VE121 - Ea./\$668.49
System, Electrophoresis; FisherBiotech vertical Minigel Wedge; Gel Size: 10x8cm or 10x10cm; 4.75 Lx5.88 Wx6.75 in. H; Durable fabricated acrylic construction; With 2 sets wedges; upper/lower buffer chambers; blocking plate; power supply

FisherBiotech Vertical Electrophoresis Systems



FB-VE10-1 - Ea./\$887.81
Vertical Electrophoresis Systems; FisherBiotech; 10 x 10cm gel size; 300mL; 4.25 L x 6.75 W x 6 in. W; Lower Buffer Chamber; Safety lid; Gaskets; 4 clamp assemblies; gel caster; 4 blank and 2 notched glass plates; 2 notched alumina plates
FB-VE16-1 - Ea./\$1,424.43
16 x 14cm gel size
FB-VE20-1 - Ea./\$1,386.49
20 x 20cm gel size

Thermo Scientific Owl Dual-Gel Vertical Electrophoresis Systems



OW-P8DS-2 - Ea./\$720.71
Vertical Electrophoresis System; Thermo Scientific Owl; Complete System; Gel size: 10W x 8-10cmL; 5.13L x 6.75W x 5.5 in.H; Two 10-well 0.8mm thick combs; 300mL buffer volume
09-518-157B - Ea./\$765.07
Gel size: 10W x 8-10cmL; Complete system plus caster; 300mL buffer volume; 5.13L x 6.75W x 5.5 in.H
OW-P8DS-3 - Ea./\$604.58
Gel size: 10W x 8-10cmL; Apparatus only; 300mL buffer volume; 5.13L x 6.75W x 5.5 in.H
OW-P9DS-2 - Ea./\$1,182.48
Gel Size: 16W x 14-16cmL; Complete system; 550mL buffer volume; 9.88W x 5.13L x 7.63 in.H
09-518-157C - Ea./\$1,264.11
Gel Size: 16W x 14-16cmL; Complete system plus caster; 550mL buffer volume; 9.88W x 5.13L x 7.63 in.H
OW-P9DS-3 - Ea./\$1,019.86
Gel Size: 16W x 14-16cmL; Apparatus only; 550mL buffer volume; 9.88W x 5.13L x 7.63 in.H
OW-P10DS2 - Ea./\$1,279.22
Gel size: 20 x 20cm; Complete system; 1150mL buffer volume; 6.5L x 12W x 9 in.H
OW-P10DS1 - Ea./\$1,287.33
Gel size: 20 x 20cm; Complete system plus caster; 1150mL buffer volume; 6.5L x 12W x 9 in.H
09518157A - Ea./\$1,136.57
Gel size: 20 x 20cm; Apparatus only; 1150mL buffer volume; 6.5L x 12W x 9 in.H

Hoefler 2-Dimensional Electrophoresis Systems



E2DCLASSIC - Ea./\$10,251.00
2-D Electrophoresis System; Hoefler; Classic; Includes IEF-100 Unit, 252 wicks, running tray, rehydration tray, cleaning brush, forceps, 10 running cup sets (each w/6 cups), SE 900 unit w/tank, lid, and gel rack
E2DELITE - Ea./\$11,965.30
Elite

Hoefler IEF100 IEF First-Dimension Unit



IEF100NA - Ea./\$6,995.00
Isoelectric Focusing System; Hoefler; Accepts six 7-24cm strips; Voltage: 12,000V; Current: 10mA; Resolution: 1uA; Platform temp: 15°-25°C; Sample cup capacity: 240uL; Large display w/control knob and soft keys; 26L x 37W x 17cmH

Hoefler SE 900 Large Format Vertical Electrophoresis System



SE90010NA - Ea./\$6,146.00
Gel System, Vertical; Hoefler; SE 900 Large Format System w/multicaster and cassettes; For 20L x 25Wcm gels; Holds 1-6 gels; Ideal for 24cm IPG strips; Built-in buffer circulation
SE900NA - Ea./\$4,747.00
System only

Electrophoresis System Accessories and Replacement Parts

FisherBiotech Accessories and Replacement Parts for Horizontal Large Gel Systems

FB-SB-2530 - Ea./\$164.53
Electrophoresis system replacement parts; FisherBiotech; Gel tray; Ultraviolet transparent; For horizontal large gel systems; With gasketed end gates; Casts 25L x 20Wcm gel; Footprint: 37.5L x 28W x 11cmH; Buffer volume: 2.3liter
FB-SB-2531 - Pk. of 2/\$16.90
Gasket; Set of 2; For Ultraviolet transparent gel tray
FB-SB-2534 - Ea./\$55.02
Comb; 8-tooth; 1.0mm thick
FB-SB-2535 - Ea./\$57.19
Comb; 8-tooth; 1.5mm thick
FB-SB-2536 - Ea./\$59.91
Comb; 12-tooth; 1.0mm thick
FB-SB-2537 - Ea./\$59.91
Comb; 12-tooth; 1.5mm thick
FB-SB-2538 - Ea./\$57.19
Comb; 16-tooth; 1.0mm thick
FB-SB-2539 - Ea./\$59.91
Comb; 16-tooth; 1.2mm thick
FB-SB-2540 - Ea./\$59.91
Comb; 20-tooth; 1.0mm thick
FB-SB-2541 - Ea./\$59.91
Comb; 20-tooth; 1.5mm thick
FB-SB-2542 - Ea./\$57.19
Comb; 24-tooth; 1.0mm thick
FB-SB-2543 - Ea./\$59.91
Comb; 24-tooth; 1.5mm thick
FB-SB-2544 - Ea./\$59.91
Comb; 28-tooth; 1.0mm thick
FB-SB-2545 - Ea./\$59.91
Comb; 28-tooth; 1.5mm thick
FB-SB-2546 - Ea./\$59.91
Comb; 32-tooth; 1.0mm thick
FB-SB-2547 - Ea./\$59.91
Comb; 32-tooth; 1.5mm thick
FB-SB-2548 - Ea./\$59.91
Comb; 36-tooth; 1.0mm thick
FB-SB-2549 - Ea./\$59.91
Comb; 36-tooth; 1.5mm thick
FB-SB-2550 - Ea./\$57.76
Comb; 21-tooth; 1.0mm thick; Microplate format

FB-SB-2551 - Ea./\$59.91
Comb; 21-tooth; 1.5mm thick; Microplate format
FB-SB-2552 - Ea./\$59.91
Comb; 42-tooth; 1.0mm thick; Microplate format
FB-SB-2553 - Ea./\$59.91
Comb; 42-tooth; 1.5mm thick; Microplate format
FB-SB-2554 - Ea./\$57.19
Preparative/marker;
FB-SB-2555 - Ea./\$59.91
Wall comb; For casting gel shorter than tray

FisherBiotech Accessories and Replacement Parts for Horizontal Midigel Systems

FB-SB-1320 - Ea./\$112.92
Electrophoresis system replacement parts; FisherBiotech; For horizontal Midigel systems; Ultraviolet transparent gel tray; 16L x 13cmW; Allows multiple gels to be poured
FB-SB-1321 - Pk. of 2/\$16.33
Gaskets; For Ultraviolet Transparent gel tray
FB-SB-1322 - Ea./\$122.56
Casting chamber; 16L x 13cmW
FB-SB-1324 - Ea./\$58.33
Comb; 8-tooth; 1.0mm thick
FB-SB-1325 - Ea./\$58.33
Comb; 8-tooth; 1.5mm thick
FB-SB-1326 - Ea./\$61.11
Comb; 12-tooth; 1.0mm thick
FB-SB-1327 - Ea./\$61.11
Comb; 12-tooth; 1.5mm thick
FB-SB-1328 - Ea./\$61.11
Comb; 16-tooth; 1.0mm thick
FB-SB-1329 - Ea./\$61.11
Comb; 16-tooth; 1.5mm thick
FB-SB-1330 - Ea./\$61.49
Comb; 20-tooth; 1.0mm thick
FB-SB-1331 - Ea./\$61.11
Comb; 20-tooth; 1.5mm thick
FB-SB-1332 - Ea./\$61.49
Comb; 24-tooth; 1.0mm thick
FB-SB-1333 - Ea./\$61.11
Comb; 24-tooth; 1.5mm thick
FB-SB-1334 - Ea./\$61.11
Comb; 1.0mm thick; Microplate format
FB-SB-1335 - Ea./\$61.11
Comb; 1.5mm thick; Microplate format
FB-SB-1336 - Ea./\$57.76
Preparative/marker; For 1.5mm thick comb
FB-SB-1337 - Ea./\$61.11
Wall comb; For casting gel shorter than tray

FisherBiotech Accessories and Replacement Parts for Horizontal Minigel Systems

FB-SB-730 - Ea./\$88.79
Electrophoresis system replacement parts; FisherBiotech; Gel tray; Ultraviolet transparent; For horizontal minigel systems; Casts 10L x 7cmW gel; Allows multiple gels to be poured
FB-SB-731 - Pk. of 2/\$11.77
Gaskets; Set of 2; For ultraviolet transparent gel tray
FB-SB-732 - Ea./\$91.39
Casting chamber; 10L x 7W x 3cmD
FB-SB-733 - Ea./\$54.55
Comb; 5-tooth; 1.0mm thick
FB-SB-734 - Ea./\$57.13
Comb; 5-tooth; 1.5mm thick

FisherBiotech Accessory/Replacement Parts For FB-VE10-1 Vertical Electrophoresis System

FB-VE10-10 - Pk. of 2/\$17.02
Electrophoresis system replacement parts; Gaskets; FisherBiotech; For FB-VE10-1 vertical electrophoresis systems; Set of 2
FB-VE10-11 - Pk. of 2/\$42.20
Clamps; 10L x 10cmW
FB-VE10-13 - Ea./\$24.83
Plates; Notched glass
FB-VE10-14 - Ea./\$16.62
Plates; Blank glass
FB-VE10-15 - Ea./\$26.48
Plates; Notched alumina
FB-VE10-19 - Ea./\$37.71
Comb; 6-teeth; 0.5mm thick

FB-VE10-17 - Ea./\$39.27
Comb; 6-teeth; 0.8mm thick
FB-VE10-18 - Ea./\$37.28
Comb; 6-teeth; 1.5mm thick
FB-VE10-22 - Ea./\$37.28
Comb; 8-teeth; 0.5mm thick
FB-VE10-20 - Ea./\$37.71
Comb; 8-teeth; 0.8mm thick
FB-VE10-21 - Ea./\$37.28
Comb; 8-teeth; 1.5mm thick
FB-VE10-23 - Ea./\$39.86
Comb; 10-teeth; 0.8mm thick
FB-VE10-24 - Ea./\$37.28
Comb; 10-teeth; 1.5mm thick
FB-VE10-25 - Ea./\$37.28
Comb; 12-teeth; 0.5mm thick
FB-VE10-26 - Ea./\$39.27
Comb; 12-teeth; 0.8mm thick
FB-VE10-27 - Ea./\$39.27
Comb; 12-teeth; 1.5mm thick
FB-VE10-28 - Ea./\$37.28
Comb; 15-teeth; 0.5mm thick
FB-VE10-29 - Ea./\$37.28
Comb; 20-teeth; 0.5mm thick

FisherBiotech Accessory/Replacement Parts for FB-VE16-1 Vertical Electrophoresis System

FB-VE16-10 - Pk. of 2/\$17.20
Electrophoresis system replacement parts; Gaskets; FisherBiotech; For FB-VE16-1 vertical electrophoresis systems; Set of 2; 16L x 14cmW
FB-VE16-11 - Pk. of 2/\$43.45
Clamps; 16L x 14cmW
FB-VE16-12 - Ea./\$30.88
Plates; Notched glass
FB-VE16-13 - Ea./\$16.94
Plates; Blank glass
FB-VE16-16 - Ea./\$16.94
Plates; Offset glass
FB-VE16-17 - Ea./\$49.00
Comb; 10-tooth; 0.8mm thick
FB-VE16-18 - Ea./\$49.49
Comb; 10-tooth; 1.5mm thick
FB-VE16-19 - Ea./\$49.00
Comb; 15-tooth; 0.8mm thick
FB-VE16-20 - Ea./\$49.00
Comb; 15-tooth; 1.5mm thick
FB-VE16-21 - Ea./\$49.00
Comb; 20-tooth; 0.8mm thick
FB-VE16-22 - Ea./\$49.00
Comb; 20-tooth; 1.5mm thick
FB-VE16-24 - Ea./\$49.00
Comb; 24-tooth; 1.5mm thick
FB-VE16-23 - Ea./\$49.49
Comb; 24-tooth; 2.9mm thick
FB-VE16-27 - Ea./\$49.00
Wall comb; 16L x 14cmW

FisherBiotech Accessory/Replacement Parts for FB-VE20-1 Vertical Electrophoresis System

FB-VE20-27 - Pk. of 2/\$50.37
Electrophoresis system accessories; FisherBiotech; Clamps; For FB-VE20-1 vertical electrophoresis systems; For gel size: 20L x 20cmW; Set of 2.
FB-VE20-10 - Pk. of 2/\$17.02
Gaskets; Set of 2
FBVE2011 - Ea./\$16.94
Plates; Glass
FBVE2012 - Ea./\$35.17
Plates; Notched glass
FB-VE20-14 - Ea./\$49.00
Comb; 10-tooth; 0.8mm thick
FB-VE20-15 - Ea./\$49.00
Comb; P2-CST; 20 Teeth; 1.5mm Thick; 449microL Well Volume
FB-VE20-16 - Ea./\$49.00
Comb; 15-tooth; 0.8mm thick
FB-VE20-17 - Ea./\$51.17
Comb; 15-tooth; 1.5mm thick
FB-VE20-18 - Ea./\$51.13
Comb; 20-tooth; 0.8mm thick
FB-VE20-19 - Ea./\$49.00
Comb; 20-tooth; 1.5mm thick

FB-VE20-20 - Ea./\$49.00
Comb; 25-tooth; 0.8mm thick
FB-VE20-21 - Ea./\$49.00
Comb; 25-tooth; 1.5mm thick
FB-VE20-24 - Ea./\$48.20
Preparative/Marker comb; For gel size: 20L x 20cmW
FB-VE20-25 - Ea./\$18.48
Spacer; Thickness: 0.8mm
FB-VE20-26 - Ea./\$18.06
Spacer; Thickness: 1.5mm

FisherBiotech Sequencing Gel Caster

FB-SEQ-CST - Ea./\$481.09
Electrophoresis system replacement parts; FisherBiotech; Sequencing gel caster; Includes: Casting platform, knobs, 12 binder clamps; Leak-proof; Gel size: 20 to 42 x 48cm; 27.75D x 8.25W x 4.75in. H (71 x 21 x 12.2cm)

Thermo Scientific Owl JGC Gel Casting Systems

OW-JGC-2 - Ea./\$157.27
Gel Caster, Model JGC-2; Thermo Scientific Owl; Vertical protein gel caster; Gel size: 16 x 14cm; L x W x H: 17.5 x 19 x 15cm; Includes casting stand, blocking plate, three-point leveling base, spacer placer, 25 gel pouches
OW-JGC-4 - Ea./\$145.62
Gel size: 10 x 10 cm; L x W x H: 13 x 13 x 11cm

Thermo Scientific Owl Standard 6-tooth Comb for Gel Electrophoresis

FBVE1016 - Ea./\$39.42
Comb, Standard; Gradient Gel Caster; Thermo Scientific Owl; 6 Teeth; 0.5mm Thick; 11.1mm W; Gel Size: 10 W x 10 cm L; Footprint: 15 W x 13 L x 13 cm H; EST Well Volume 89uL

Evaporators

Centrifugal Evaporators

Thermo Scientific Savant DNA SpeedVac Concentrators

20-548-130 - Ea./\$6,005.00
Concentrator; SpeedVac; Thermo Scientific Savant DNA120; 115V 60Hz; Includes one RD36 rotor
20-548-132 - Ea./\$7,170.00
DNA1200P for Oligos; 120V 60Hz
20-548-134 - Ea./\$8,244.00
ISS110 DNA; 115V 60Hz

Hoods and Enclosures

Fume Hoods

Thermo Scientific Hamilton PaceAire Fume Hood

HM54L51200B - Ea./\$4,051.11
Fume Hood; Thermo Scientific Hamilton PaceAire; Without Blower; Benchtop; Full-view safety glass; 29 in. sash opening; 8 in. dia. exhaust collare; Double-walled, reinforced steel; 23-3/4 L x 36 W x 53 in. H
HM54L51300B - Ea./\$6,412.80
With Blower



Thermo Scientific Hamilton SafeAire Constant Volume/Bypass Fume Hoods

HM554S710PB - Ea./\$9,438.83
Fume Hood, Walk-In; Thermo Scientific Hamilton; SafeAire Constant Volume Bypass; Width: 60 in. (152.4cm); Collar Size: 6 x 23 in. (15.2 x 58.4cm); Sash Opening: 32 in; Static Pressure at 100fpm is 1110cfm/0.20 in. H₂O; At 125fpm is 1390cfm/0.32 in. H₂O
HM554S713PB - Ea./\$9,797.44
Width: 72 in. (182.9cm); Static Pressure at 100fpm is 1380cfm/0.32 in. H₂O; At 125fpm is 1720cfm/0.40 in. H₂O
HM554S716PB - Ea./\$11,485.14
Width: 96 in. (243.8cm); Static Pressure at 100fpm is 1900cfm/0.29 in. H₂O; At 125fpm is 2380cfm/0.36 in. H₂O

Thermo Scientific Hamilton SafeAire II Constant-Volume/Bypass Fume Hoods

03-421-200 - Ea./\$5,129.23
Fume Hood, Thermo Scientific Hamilton SafeAire II; Benchtop; Constant-Volume/Bypass; 48 in. Hood; Total Exhaust Pressure Loss, 485cfm; Sightline, 18 in.; Overall H x D, 54 1/4 x 31 1/4 in.; For 120V 60Hz
03-421-201 - Ea./\$5,470.81
60 in. Hood; Total Exhaust Pressure Loss, 660cfm
03-421-202 - Ea./\$5,914.69
72 in. Hood; Total Exhaust Pressure Loss, 785cfm
HM554S2713 - Ea./\$9,763.09
72 in. Hood; Total Exhaust Pressure Loss, 1380cfm
03-421-203 - Ea./\$7,021.11
96 in. Hood; Total Exhaust Pressure Loss, 1081cfm
HM554S2716 - Ea./\$10,488.49
96 in. Hood; Total Exhaust Pressure Loss, 1900cfm

Thermo Scientific Hamilton SafeAire II Fume Hood Assemblies

HMLAB025 - Ea./\$11,040.06
Workstations; Fume Hood; Thermo Scientific Hamilton; SafeAir; Constant volume; One acid storage base cabinet; Steel 48 in. W; 4 ft.
HMLAB026 - Ea./\$12,822.53
60 in. W; 5ft.; One Fume hood base cabinet; 1 Acid storage base cabinet
HMLAB027 - Ea./\$17,529.42
72 in. W; 6ft.; One Fume hood base cabinet; 1 Acid storage cabinet
HMLAB028 - Ea./\$15,298.90
96 in. W; 8ft.; One Fume hood base cabinet; 1 Acid storage base cabinet

Thermo Scientific Hamilton SafeAire II Perch Fume Hood

03-421-204 - Ea./\$17,132.32
Fume Hood, Thermo Scientific Hamilton SafeAire II; Perch; Hood
03-421-205 - Ea./\$20,843.33
Perch

Thermo Scientific Hamilton SafeAire II Radiolotope Fume Hood

03-421-207 - Ea./\$19,775.47
Fume Hood, Thermo Scientific Hamilton SafeAire II; Radiolotope; Hood

Laminar Flow

Thermo Scientific Accessories for Series 1300 A2 Biological Safety Cabinets

15-474-202 - Ea./\$529.75
Stand, Manual Adjustable; For 4 ft. Thermo Scientific 1300 Series A2 Biosafety Cabinet; Work surface height of 30-37in. (75-95cm); Adjustable in 1in. increments for seated or standing applications; Included in 1380 series package
15-474-203 - Ea./\$634.68
Manual adjustable stand for 6 ft. cabinet
15-474-208 - Ea./\$118.36
Combustible gas valve; For standard applications

15-474-209 - Ea./\$118.36
 Noncombustible gas valve; For standard applications
15-474-210 - Ea./\$116.81
 Vacuum valve; For standard applications
15-474-211 - Ea./\$117.34
 Water valve; For standard applications
15-474-212 - Ea./\$236.07
 IV Bag Holder Kit
15-474-213 - Ea./\$106.36
 Arm rest
15-474-224 - Ea./\$251.94
 Footrest
13-261-224 - Ea./\$700.00
 Universal Air/Gas Piping; For right side of Models 1345 and 1375
13-261-225 - Ea./\$700.00
 Universal Air/Gas Piping; For left side of Models 1345 and 1375
13-261-226 - Ea./\$1,400.00
 Universal Air/Gas Piping; For both sides of Models 1345 and 1375
13-261-227 - Ea./\$850.00
 Universal Air/Gas Piping; For right side of Models 1347 and 1377
13-261-228 - Ea./\$850.00
 Universal Air/Gas Piping; For left side of Models 1347 and 1377
13-261-229 - Ea./\$1,700.00
 Universal Air/Gas Piping; For both sides of Models 1347 and 1377
15-453-300 - Ea./\$3,000.00
 Electric adjustable stand for 4 ft. cabinet
15-453-301 - Ea./\$3,500.00
 Electric adjustable stand for 6 ft. cabinet
15-474-204 - Ea./\$107.37
 Combustible gas valve; For universal piping options only
15-474-205 - Ea./\$107.37
 Noncombustible gas valve; For universal piping options only
15-474-206 - Ea./\$107.37
 Vacuum valve; For universal piping options only
15-474-207 - Ea./\$104.31
 Water valve; For universal piping options only
15-474-216 - Ea./\$501.81
 Thimble Duct Exhaust Transition for 4 ft. cabinet
15-474-217 - Ea./\$600.40
 Thimble Duct Exhaust Transition for 6 ft. cabinet
15-474-219 - Ea./\$236.27
 UV light for 4 ft. cabinet
15-474-221 - Ea./\$721.00
 Universal exhaust piping; For right side of Models 1355 and 1385
15-474-322 - Ea./\$721.00
 Universal exhaust piping; For left side of Models 1355 and 1385
15-474-323 - Ea./\$875.50
 Universal exhaust piping; For right side of Models 1357 and 1387
15-474-324 - Ea./\$858.50
 Universal exhaust piping; For left side of Models 1357 and 1387
15-474-325 - Ea./\$677.71
 Rolling caster stand for 4 ft. cabinet
15-474-326 - Ea./\$813.40
 Rolling caster stand for 6 ft. cabinet
15-474-327 - Ea./\$234.09
 UV light for 6 ft. cabinet

Hotplates

Standard Heating Hotplates

Fisher Scientific Isotemp Basic Hotplates



11-100-16H - Ea./\$208.99
 Hotplate; Fisher Scientific Isotemp; Ceramic top; 4 x 4 in. heating surface; Temp. control to 540°C; 120V 60Hz
11-100-49H - Ea./\$237.48
 Ceramic hotplate, 7 x 7 in.; 540°C; 120V
11-100-100H - Ea./\$386.29
 Ceramic hotplate, 10 x 10 in.; 540°C; 120V
11-200-49H - Ea./\$306.09
 Aluminum hotplate, 7 x 7 in.; 380°C; 120V

Fisher Scientific Isotemp Digital Hotplates



11-300-49HP - Ea./\$681.55
 Hotplate; Fisher Scientific Isotemp; Digital control; Ceramic top; Temperature range: ambient to 540°C; 120V 60Hz
11-400-49HP - Ea./\$831.95
 Aluminum-top hotplate, 380°C; 120V

Stirring Hotplates

Fisher Scientific Isotemp Basic Stirring Hotplates



11-100-100SH - Ea./\$529.77
 Stirring Hotplate; Fisher Scientific Isotemp; Ceramic top; 10 x 10 in. heating surface; Temp. control to 540C; Stirring range 0-1200rpm; 120V 60Hz
11-100-16SH - Ea./\$382.05
 Ceramic stirring hotplate, 4 x 4 in., 120V 60Hz
11-100-49SH - Ea./\$397.87
 Ceramic stirring hotplate, 7 x 7 in., 120V 60Hz
11-200-49SH - Ea./\$467.52
 Aluminum stirring hotplate, 7 x 7 in., 120V 60Hz

Fisher Scientific Isotemp Digital Stirring Hotplates

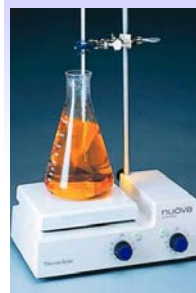


11-300-49SHP - Ea./\$806.28
 Stirring Hotplate; Fisher Scientific Isotemp; Digital control; Ceramic top; Temperature range: ambient to 540C; Speed range 60-1200rpm; 120V 60Hz
11-400-49SHP - Ea./\$949.81
 Aluminum-Top stirring hotplate; 120V

Thermo Scientific Barnstead Explosion-Proof SAFE-T SHP9 Stirring Hot plates

11-506 - Ea./\$3,094.00
 Hot Plate, Stirring; Thermo Scientific Barnstead; Explosion-proof; Offers safety protection and controls for hazardous Class I, Group C and D flammable gases or solvent vapors applications; 120V 50/60Hz, 1070w, 8.9A

Thermo Scientific Barnstead Nuova Stirring Hotplates



11-496-55Q - Ea./\$657.37
 Hot Plate, Stirring; Thermo Scientific Barnstead; Nuova; w/Stirring and heating capabilities; Compact design; Low temperature stability; Corrosion-resistant top; Stirring speed range: 100 to 1000rpm; 120V, 858w, 7.3A; Shp. wt: 11 lb. (5kg)

Thermo Scientific Cimarec Basic Stirring Hotplates



14-490-202 - Ea./\$295.67
Hotplate, Stirring; Thermo Scientific Cimarec; Basic; Yellow; 100 to 1200rpm; 150° to 538°C (302 to 1000°F); Ceramic top plate; Aluminum body; Control knob; Top plate dimensions: 4.25 x 4.25 in. (10.8 x 10.8cm); Overall dimensions: 7.9 x 5.7 x 14-490-205 - Ea./\$320.39
Ceramic-Top; 7.25 x 7.25 in. (18.4 x 18.4cm); 120V 60Hz, 9.18A, 1086w

Thermo Scientific Cimarec Digital Stirring Hotplates



11-675-909Q - Ea./\$454.38
Hotplate, Digital Stirring; Thermo Scientific; Cimarec; 0.5L Max. flask size; 4 x 4 in. Ceramic Top; Temp. range; ambient to 500°C; Stirring Speed to 1100rpm; 120 to
11-675-915Q - Ea./\$622.08
Ceramic-Top; 6L; 10 x 10 in.
11-675-912Q - Ea./\$465.65
Ceramic-Top; 2L; 13 L x 8-1/4 W
11-400-005Q - Ea./\$544.43
Aluminum-Top; 7.25 x 7.25 in.; 120V

Thermo Scientific Multi-Position Hotplates and Stirrers

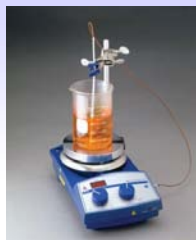
11-320-12Q - Ea./\$1,740.00
Hotplates, Stirring; Thermo Scientific; Multi-Position; Ceramic heating surface; Several stirring options; 4 Position; 120V; 12.5 amps; 1527W; D x H x W=15 x 6.5 x 10.5 in.
11-320-16Q - Ea./\$1,574.00
Ceramic Stirring Hotplate, 5 position
11-320-17Q - Ea./\$1,652.00
Porcelain Stirring Hotplate, 5 position
11-496-109Q - Ea./\$4,103.00
Ceramic Stirring Hotplate, 6 position
11-502-100Q - Ea./\$1,870.00
Porcelain Stirrer, 9 position

Thermo Scientific RT Elite Stirring Hotplates



11-400-023Q - Ea./\$869.26
Stirring Hotplate, Thermo Scientific; RT Elite, max speed 1200rpm, max temp 350C., 120V 50/60Hz, 5.3A 635w
11-400-026Q - Ea./\$1,019.01
Stainless-steel top, 120V 50/60Hz, 3A, 710w

Thermo Scientific RT Stirring Hotplates



11-400-011Q - Ea./\$783.83
Hotplate, Stirring; Thermo Scientific; RT, Digital, Aluminum heating surface, 120V 50/60Hz, 5.3A 635w
11-400-014Q - Ea./\$923.91
Stainless steel; 120V 50/60Hz

Thermo Scientific Super-Nuova Multi-Position Digital Hotplates and Stirring Hotplates



11-475-30Q - Ea./\$2,228.00
Hotplate, Digital Stirring; Thermo Scientific; Super Nuova; 4 position; Ceramic top; 10-1/4 x 10-1/4 in.; 35 lb. Load capac.; Stir range: 50 to 1200rpm; Temp. range: Ambient to 370 deg.C; 120v 50/60Hz, 1400w, 11.8A

Thermo Scientific Super-Nuova Single-Position Digital Stirring Hotplates



11-675-917Q - Ea./\$964.34
Hotplate, Stirring; Digital; Thermo Scientific; Nuova; 2L mac. Flask size; 7-1/4 x 7-1/4 in.; Ceramic Top, 25 lb. Load capac.; 1-position; Stir speed: 50 to 1200rpm; Temp. range: 1 to 370°C; 120v 50/60Hz, 670w, 5.6A
09-050-287Q - Ea./\$1,346.89
Ceramic-Top; 10-1/4 x 10-1/4 in.; 35 lb. Load cap; 120V
11-675-926Q - Ea./\$1,100.00
Aluminum-Top; 2L; 7-1/2 x 7-1/2 in.; 120V

Thermo Scientific Type K TC Immersion Probe for Mirak Ceramic Top Digital Hotplate Stirrers

11-496-102 - Ea./\$180.56
Thermo Scientific; Remote Probe; 10 in. L; 316 stainless steel; Max. temperature 1100°C
11-496-94 - Ea./\$236.60
7 in. PTFE Ctd Immersion Probe

Corning Digital Hotplates and Stirring Hotplates



07-250-140 - Cs. of 1/\$567.57
Stirring Hotplate Kit; Corning; Includes 11-500-150 Digital Stirring Hotplate (5 x 7 in. top plate; 120V 60Hz, 628w, 5.3A), 07-250-143 Temperature Controller, 07-250-144 Support Rod and 14-972-50 Stir Bar Retriever
07-250-141 - Cs. of 1/\$761.50
Stirring Hotplate Kit, 10 x 10, 120V 60Hz, 1113w, 9.3A
11-500-150 - Cs. of 1/\$510.59
Stirring Hotplate, 5 x 7, 120V 60Hz, 698w, 5.9A
11-500-151 - Cs. of 1/\$672.17
Stirring Hotplate, 10 x 10, 120V 60Hz, 1113w, 9.3A
11-500-152 - Cs. of 1/\$287.97
Hotplate, 5 x 7, 120V 60Hz, 628w, 5.3A
11-500-153 - Cs. of 1/\$492.75
Hotplate, 10 x 10, 120V 60Hz, 1043w, 8.7A
11-500-154 - Cs. of 1/\$282.57
Stirrer, 5x7 in. Stirrer, 120V
11-500-155 - Cs. of 1/\$522.16
Stirrer, 10x10 in. Stirrer, 120V

Corning Hotplates and Hotplate/Stirrers



11-497-6A - Cs. of 1/\$484.44
Hotplate/Stirrers; Corning Hotplate/Stirrers; Heating Surface: 20 sq. in. (130cm&superscript_begin;2&superscript_end;); Model: PC-220, 120V 60Hz 283w 2.4A
11-497A - Cs. of 1/\$251.88
Hotplate; 4x5 in.; 120V

Incubators

Carbon Dioxide Incubators

Fisher Scientific Isotemp CO2 Incubators



- 13-255-25** - Ea./\$5,518.00
Incubator, Carbon Dioxide, Fisher Scientific; Isotemp Water-Jacketed; 6.5 cu. ft. chamber volume; With T/C sensor, gas-inlet and sample-inlet filters, RH Display; 25L x 26.3W x 39.5 in. H; For 120V, 60Hz, 3.6A
- 13-255-26** - Ea./\$6,542.00
Water-Jacketed; IR sensor, RH Display; 120V, 60Hz, 3.6A
- 13-255-27** - Ea./\$5,518.00
Direct-Heat; TC sensor, RH Display; 120V, 50/60Hz, 2.4A
- 13-255-28** - Ea./\$6,542.00
Direct-Heat; IR sensor, RH Display; 120V, 50/60Hz, 2.4A

Thermo Scientific Decontamination Kit

- 15-497-025** - Ea./\$151.65
Decontamination Kit; Thermo Scientific; Includes all chamber filters and gaskets (except door) and tubing; For 3110 Series Incubators

Thermo Scientific NAPCO 8000 Direct-Heat CO2 Incubators



- 15-497-011** - Ea./\$7,516.00
Incubator, Carbon Dioxide, Thermo Scientific; NAPCO 8000 Series Direct Heat; 6.5 cu. ft. chamber volume; With IR sensor, in-chamber HEPA filter; 25L x 26.3W x 39.5 in. H; For 120 V, 50/60Hz
- 15-497-012** - Ea./\$8,479.00
With IR sensor, RH display
- 15-497-009** - Ea./\$6,426.00
With TC sensor
- 15-497-010** - Ea./\$7,339.00
With TC sensor, RH display

Thermo Scientific NAPCO 8000 Water-Jacketed CO2 Incubators



- 15-497-003** - Ea./\$7,545.00
Incubator, Carbon Dioxide, Thermo Scientific; NAPCO 8000 Series Water-Jacketed; 6.5 cu. ft. chamber volume; With IR sensor, in-chamber HEPA filter; 25L x 26.3W x 39.5 in. H; For 120 V, 50/60Hz
- 15-497-004** - Ea./\$8,106.00
With IR sensor, RH Display
- 15-497-007** - Ea./\$8,734.00
With IR sensor, O₂; suppression control
- 15-497-008** - Ea./\$9,249.00
With IR sensor, O₂; suppression control, RH Display
- 15-497-001** - Ea./\$6,426.00
With TC sensor
- 15-497-002** - Ea./\$6,967.00
With TC sensor, RH Display
- 15-497-005** - Ea./\$7,665.00
With TC sensor, O₂; suppression control
- 15-497-006** - Ea./\$8,168.00
With TC sensor, O₂; suppression control, RH Display

Incubators Accessories

Fisher Scientific Isotemp and Napco CO2 incubators Accessories

- 15-497-016** - Ea./\$142.00
Stainless-steel Shelf; Fisher Scientific Isotemp; Incubator Accessory; For Isotemp Large Capacity and NAPCO 8000 Series CO2 Incubators
- 15-497-017** - Ea./\$420.00
Support Stand, With Adjustable Leveling Feet, 61/2 in.H (16.5cm)
- 15-497-018** - Ea./\$493.37
Support Stand, With 2 Locking Casters And 2 Leveling Feet, 2-3/4 in. H

- 15-497-019** - Ea./\$883.20
Gas Tank Switcher, External Mount, 120V 60Hz
- 15-497-020** - Ea./\$362.00
CO2 Gas Regulator, 2 Stage
- 15-497-026** - Pk. of 10/\$106.00
Gas Line Filters
- 15-497-027** - Ea./\$509.32
Roller Base

Thermo Scientific NAPCO Incubator Accessories

- 15-497-013** - Ea./\$916.43
Kit; 8 segment door; For Thermo Scientific Napco 8000 Autoclave
- 15-497-015** - Ea./\$259.22
Inner Door Lock
- 15-497-021** - Ea./\$363.76
N₂; Gas Regulator
- 15-497-022** - Ea./\$59.34
Main HEPA Filter; For 3110 Series, 310 Series, Steri-Cycle Series incubators

Thermo Scientific Series 8000 Incubator Filters

- 15-497-023** - Pk. of 4/\$199.10
Filter; HEPA; Thermo Scientific; Value pack (4 filters); For Forma direct heat CO2 incubators
- 15-497-024** - Ea./\$99.31
HEPA Filter Replacement Kit

Label and Sign Making Machines

TubeWriter Direct Printing Systems



- 02-500-105** - Ea./\$131.90
Custom Printing Rack; TubeWriter; Basic
- 02-500-129** - Ea./\$16.03
Custom Stop, for Any Pen
- 02-500-102** - Ea./\$505.95
Ethernet TCP/IP Network Printing Package
- 02-500-101** - Ea./\$8,500.00
High-Throughput Model with 4 Custom Racks
- 02-500-104** - Ea./\$357.71
One-year extended Warranty
- 02-500-127** - Ea./\$363.44
Polycarbonate Enclosure
- 02-500-138** - Ea./\$37.39
Replacement Side Spacer Block
- 02-500-139** - Ea./\$37.39
Replacement Spacer, Block-L
- 02-500-134** - Ea./\$10.71
Replacement Stop, for Any Pen
- 02-500-137** - Ea./\$10.71
Replacement Top Ejector Block
- 02-500-108** - Ea./\$130.76
Sidewriting Rack; 0.2mL; Microcentrifuge
- 02-500-110** - Ea./\$131.90
Sidewriting Rack; 0.5mL; Microcentrifuge
- 02-500-118** - Ea./\$130.76
Sidewriting Rack; 0.5mL; Storage
- 02-500-119** - Ea./\$130.76
Sidewriting Rack; 0.65mL; Storage
- 02-500-120** - Ea./\$130.76
Sidewriting Rack; 0.75mL; Storage
- 02-500-121** - Ea./\$130.76
Sidewriting Rack; 1.0mL; Storage
- 02-500-122** - Ea./\$131.90
Sidewriting Rack; 1.4mL; Storage
- 02-500-112** - Ea./\$131.90
Sidewriting Rack; 1.5mL; Microcentrifuge
- 02-500-114** - Ea./\$131.90
Sidewriting Rack; 1.8mL; Cryovial
- 02-500-115** - Ea./\$131.90
Sidewriting Rack; 15mL Conical
- 02-500-116** - Ea./\$130.76
Sidewriting Rack; 50mL; Conical
- 02-500-100** - Ea./\$4,500.00
Standard Model with 2 Custom Racks
- 02-500-107** - Ea./\$130.76
Topwriting Rack; 0.2mL; Microcentrifuge
- 02-500-109** - Ea./\$131.90
Topwriting Rack; 0.5mL; Microcentrifuge

02-500-111 - Ea./\$131.90
Topwriting Rack; 1.2mL; Microcentrifuge
02-500-113 - Ea./\$130.76
Topwriting Rack; 1.8mL; Cryovial
02-500-117 - Ea./\$130.76
Topwriting Rack; Microplate

Microplate Washers

BioTek ELx405 Microplate Washers



BTELX405R - Ea./\$7,280.00
Microplate Washer; Basic 96-Well; Auto; Flat/round/V-bottom plates; Fully programmable; Vol. Disp. 50 to 3000µmL/well; Precision <3%CV typical; CE Mark, ETL Mark for UL3101-1 CAN/CSA C22.2 No. 1010.1; Conforms to EN 61010-1; Bio-Tek
BTELX405VR - Ea./\$8,640.00
96-Well Autoplate; Standard; Valve module
ELX405RS - Ea./\$9,360.00
96-Well Autoplate; built-in ultrasonic cleaner
ELX405VRS - Ea./\$10,720.00
96-Well Autoplate; built-in ultrasonic cleaner; Valve module
BTELX405U - Ea./\$13,010.00
96- and 384-well, switchable; Standard
BTELX405UV - Ea./\$14,360.00
96- and 384-well, switchable; Valve module
ELX405US - Ea./\$15,190.00
96- and 384-well, switchable; built-in ultrasonic cleaner
ELX405UVS - Ea./\$16,540.00
96- and 384-well, switchable; built-in ultrasonic cleaner; Valve module
BTELX405UCW - Ea./\$13,630.00
96- or 384-well; optimized for sensitive cell washing; cell washing; Standard
ELX405UCWS - Ea./\$15,710.00
96- or 384-well; optimized for sensitive cell washing; built-in ultrasonic cleaner
ELX405UCWVS - Ea./\$17,070.00
96- or 384-well; optimized for sensitive cell washing; built-in ultrasonic cleaner; Valve module
ELX405HT2 - Ea./\$17,480.00
96- or 384-well; Dual-Action manifold; Standard
ELX405HTV2S - Ea./\$20,910.00
96- or 384-well; Dual-Action manifold; ultrasonic cleaner; Valve module
ELX405HTS - Ea./\$18,110.00
384-Well; High Speed; built-in ultrasonic cleaner;
ELX405HTVS - Ea./\$19,450.00
384-Well; High Speed; built-in ultrasonic cleaner; Valve module;

BioTek ELx50 Filter Microplate Washer



12-566-700 - Ea./\$8,430.00
Microplate Washers; ELx50 filter microplate washer; BioTek Instruments; Aspiration carrier directs residual away from plate bottoms; Programmable aspiration time, dispense volume, flow rate, optional soak; Pore sizes 0.45 to 1.2µm

BioTek ELx50 Microplate Strip Washer



BTELX508 - Ea./\$5,100.00
Microplate Washers; Bio-Tek ELx50; Standard strip washer; Automatic; 8-well Strip; 16L x 14W x 6.5 in.H (40 x 35 x 16.25cm); 100-250V 50/60Hz; Syringe-drive fluid delivery system for precise control
BTELX508V - Ea./\$6,340.00
Washer with Valves; 8-Well Strip
BTELX5012 - Ea./\$5,100.00
Standard, 12-Well Strip
BTELX5012V - Ea./\$6,340.00
Washer with Valves; 12-Well Strip
BTELX5016 - Ea./\$6,140.00
Standard, 16-Well Strip

BTELX5016V - Ea./\$7,385.00
Washer with Valves; 16-Well Strip

Microscopes

Compound Microscopes - Inverted

Carl Zeiss Axiovert 40 CFL Inverted Microscope



12-070-441 - Ea./\$17,650.00
Microscope, Inverted; Carl Zeiss, Axiovert 40 CFL; Includes: Stand; Binocular head; Fixed stage plate; Condenser; Neutral density and conversion filters; Appropriate filter sets for phase contrast and fluorescence; Objectives; Eyepieces

Carl Zeiss Invertoskop 40 C Inverted Microscope



12-070-440 - Ea./\$6,590.00
Microscope, Inverted; Carl Zeiss Invertoskop 40 C; 10X wide-field eyepieces, 20mm field of view; Binocular with 45° viewing angle; photographic and video documentation (100/100); Quintuple nosepiece; ariable 12V, 35w halogen illuminator

Compound Microscopes - Upright

Fisher Scientific Micromaster I and II Digital/Video Microscopes



12-560-48 - Ea./\$2,460.11
Microscopes, compound upright digital; Fisher Scientific Micromaster I; USB 2.0 digital-only; Brightfield; Eyepiece: 10X widefield, 18mm FOV; Stage L x W: 140 x 160mm; 110V 60Hz; Total magnification: 10X/100X/400X/1000X
12-560-49 - Ea./\$3,572.25
Micromaster I; USB 2.0 digital-only; Phase contrast
12-563-311 - Ea./\$2,235.78
Micromaster I; USB 1.1 digital/video; Brightfield
12-563-312 - Ea./\$3,343.37
Micromaster I; USB 1.1 digital/video; Phase contrast
12-563-320 - Ea./\$2,235.78
Micromaster I; USB 1.1 digital/video; Brightfield with LCD
12-563-321 - Ea./\$3,343.37
Micromaster I; USB 1.1 digital/video; Phase contrast w/LCD
12-563-313 - Ea./\$1,917.20
Micromaster II; USB 1.1 digital/Video; Brightfield
12-563-314 - Ea./\$2,648.18
Micromaster II; USB 1.1 digital/video; Phase contrast
12-563-322 - Ea./\$1,917.20
Micromaster II; USB 1.1 digital/video; Brightfield with LCD
12-563-323 - Ea./\$2,648.18
Micromaster II; USB 1.1 digital/video; Phase contrast w/LCD

Fisher Scientific Micromaster Infinity Optics Microscopes



12-564-050 - Ea./\$3,493.61
Microscopes, compound upright; Fisher Scientific Micromaster infinity optics; Brightfield; Binocular head; Reversed 5-position nosepiece; Planachromatic 4X, 10X, 20X, 40X, 100X oil immersion; 19L x 10W x 2 in.H (49 x 24.5 x 42.5cm); 22 lb.
12-564-051 - Ea./\$3,448.45
Brightfield; Trinocular head
12-564-054 - Ea./\$4,623.85
Brightfield digital; Binocular head
12-564-052 - Ea./\$4,187.08
Phase contrast; Binocular head

12-564-053 - Ea./\$4,286.64
Phase contrast; Trinocular head
12-564-055 - Ea./\$5,413.10
Phase contrast digital; Trinocular head

Carl Zeiss Axio Scope A1 Upright Research Microscopes



12-071-300 - Ea./\$10,375.00
Microscope, Compound Upright, Carl Zeiss; Axio Scope A1; Optical design: ICS; Eyepiece: PL 10x/23; Nosepiece: 6-position; Max. FOV: 23mm; Obj.: A-Plan; Illumination: 12V/35w Halogen, Kohler; Brightfield; Upright; 24L x 12W x 22 in. H
12-071-301 - Ea./\$22,465.33
Brightfield/Fluorescence Model

Carl Zeiss AxioStar Plus Microscopes



12-070-442 - Ea./\$5,710.00
Microscope, Compound Upright, Carl Zeiss; AxioStar Hematology Package
12-072-400 - Ea./\$4,300.00
AxioStar Brightfield Package; with A-PLAN 5X/10X/40X/100X objectives
12-072-401 - Ea./\$4,365.00
AxioStar Brightfield/Phase 2 Package

Carl Zeiss Primo Star Microscopes



12-071-402 - Ea./\$1,425.00
Microscope, Compound Upright, Carl Zeiss; Primo Star Student, Binocular tube, adjustable-field diaphragm, left-hand stage, Fixed Kohler configuration, centerable condenser, 18mm FOV eyepieces, Halogen lamp
12-071-403 - Ea./\$1,705.00
Right-hand stage; Fixed Kohler; centerable condenser, 18mm FOV eyepieces, LED light source
12-071-404 - Ea./\$1,999.00
Right-hand stage; 18 mm (Fixed-Koehler) and 20 mm (Full-Koehler); Halogen lamp
12-071-405 - Ea./\$2,055.00
Left-hand stage; Full Kohler; centerable condenser, 20mm FOV eyepieces, Halogen lamp
12-071-406 - Ea./\$2,292.00
Right-hand stage; Full Kohler; centerable condenser, 20mm FOV eyepiece, LED light source
12-071-407 - Ea./\$2,268.00
Left-hand stage; Full Kohler; centerable condenser, 20mm FOV eyepieces, LED light source
12-071-408 - Ea./\$2,055.00
Right-hand stage; Full Kohler; 40X Phase 2 objective; centerable condenser, 20m FOV eyepieces, Halogen lamp
12-071-409 - Ea./\$2,195.00
Right-hand stage; Full Kohler; 40X Phase 2 objective; centerable condenser, 20m FOV eyepieces, Halogen lamp
12-071-410 - Ea./\$1,355.00
Right-hand stage; Fixed Kohler; precentered condenser, 18mm FOV eyepieces with pointer, Halogen lamp
12-071-411 - Ea./\$1,595.00
Right-hand stage; Full Kohler; 18mm FOV eyepieces; with pointer, Halogen lamp

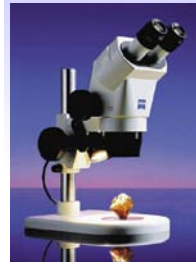
Stereo Microscopes

Fisher Scientific Stereomaster Digital Zoom High-Resolution Imaging Systems



12-564-159 - Ea./\$3,288.48
Imaging System, Digital Zoom High-Resolution; Fisher Scientific Stereomaster; with Multipurpose Stand; Digital Camera Head, 11X to 88X zoom range; dual halogen illumination
12-564-160 - Ea./\$5,695.87
Fiber optic illumination; with Boom Stand
12-564-161 - Ea./\$5,241.61
Fiber optic illumination; with Industrial Pole Stand

Carl Zeiss Stemi 2000/2000C Stereomicroscopes



12-070-280 - Ea./\$3,705.00
Stereomicroscope, Stemi 2000, 0.65X to 5.0X Zoom Range, 286mm Working Distance, For Stereoscopic Observation
12-070-281 - Ea./\$4,295.00
Port for Photo Accessories/Video Camera

Microscope Replacement Parts

Fisher Scientific Micromaster Digital and Video Heads

12-563-309 - Ea./\$1,216.37
Digital/Video Head, Microscope Accessory, Fisher Scientific; For Micromaster I and II Microscopes with serial number beginning in FW or WS.
12-564-132 - Ea./\$1,349.62
Digital Head; USB 2.0; With Micron Software

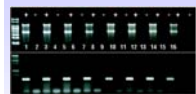
Molecular Biology Kits

Promega Maxwell 16 DNA Purification Kits



PRAS1010 - Ea./\$258.01
DNA Purification Kit, Blood DNA; Maxwell 16; Used with Maxwell 16 instrument to purify genomic DNA from whole blood; Sample size: Up to 400uL; 48 preps
PRAS1020 - Ea./\$258.01
Cell DNA Purification Kit
PRAS1030 - Ea./\$268.25
Tissue DNA Purification Kit
PRAS1130 - Ea./\$310.08
FFPE Tissue LEV DNA Purification Kit
PRAS1140 - Ea./\$310.08
Cell LEV DNA Purification Kit

Promega Maxwell 16 RNA Purification Kits



PRAS1225 - Ea./\$310.08
RNA purification kit; Maxwell 16 Cell LEV Total RNA Purification Kit; automated purification of total RNA from the cytoplasm of eukaryotic cultured cells
PRAS1050 - Ea./\$310.46
Total RNA Kit
PRAS1220 - Ea./\$310.08
Tissue LEV Total RNA Kit

Promega Maxwell 16 Polyhistidine Protein Purification System

PRAS1060 - Ea./\$316.55
Protein Purification Kits; Maxwell 16 Polyhistidine Protein Purification Kit; Promega; Purifies polyhistidine-tagged proteins from bacterial, mammalian and insect cells as well as culture media; 48 preps/kit

Ovens

Convection Ovens

Fisher Scientific Isotemp 500 Economy Lab Ovens



13-246-516GAQ - Ea./\$1,154.02
Oven, Lab; Fisher Scientific Economy; Ambient +5° to 210°C; 120V 50/60Hz, 6.5A; 1.7 cu. ft.
13-246-506GAQ - Ea./\$937.68
0.7 cu. ft.; 120V 50/60Hz, 3.5A

Fisher Scientific Isotemp Premium Lab Ovens



13-247-725F - Ea./\$2,537.02
Oven; Premium Lab; Fisher Scientific Isotemp; Forced Air; 120V 60Hz, 15A, 1800w; Capacity (Chamber Volume): 2.5 cu. ft.; Model: Small; 23-1/2 L x 25-3/4 W x 26 in. H
13-247-725G - Ea./\$2,056.92
Gravity Flow; 2.5 cu. ft.; Small
13-247-737F - Ea./\$2,860.59
Forced Air; 3.75 cu ft.; Medium
13-247-737G - Ea./\$2,511.80
Gravity Flow; 3.75 cu ft.; Medium
13-247-750F - Ea./\$3,447.82
Force Air; 5.0 cu. Ft.; Large
13-247-750G - Ea./\$2,957.23
Gravity Flow; 5.0 cu ft.; Large

Fisher Scientific Isotemp Standard Lab Ovens



13-247-625G - Ea./\$1,561.10
Oven, Lab; Standard; Fisher Scientific Isotemp; Small Model; Gravity-flow convection; Capacity 2.5 cu. ft.; Temp. range 50° to 225°C; 1325 BTU/hr. at 200°C; 24 air exchanges/hr.; Exterior 23-1/2 L x 25-3/4 W x 26 in. H; Chamber 18D x 18W x 13-1
13-247-637G - Ea./\$1,895.15
Gravity Flow; 3.75 cu. ft.; Standard
13-247-650G - Ea./\$2,124.17
Gravity Flow; 5.0 cu ft.; Standard

Thermo Scientific Lindberg/Blue M Deluxe Heating and Drying Ovens



11-650-906 - Ea./\$3,777.00
Oven, Mechanical Convection; Thermo Scientific Lindberg/Blue M Deluxe; 2.5 cu. ft.; 50 to 325°C; 120V

Thermo Scientific Lindberg/Blue M Performance Heating and Drying Ovens

11-650-900 - Ea./\$2,158.00
Oven, Gravity Convection; Thermo Scientific Lindberg Blue M Performance; 2.5 cu. ft.; 50 to 275°C; 120V
11-650-901 - Ea./\$2,483.00
Gravity Convection; 3.75 cu. ft.
11-650-902 - Ea./\$3,237.00
Gravity Convection; 5 cu. ft.
11-650-903 - Ea./\$2,698.00
Mechanical Convection; 2.5 cu. ft.
11-650-904 - Ea./\$3,130.00
Mechanical Convection; 3.75 cu. ft.
11-650-905 - Ea./\$3,562.00
Mechanical Convection; 5 cu. ft.

Thermo Scientific Precision Compact Heating and Drying Ovens



11-475-150 - Ea./\$718.13
Oven; Gravity Convection; Thermo Scientific Precision Compact; 0.7cf; 120V
11-475-152 - Ea./\$827.28
1.7cf; 120V; Gravity convection
11-475-154 - Ea./\$1,946.00
1.7cf; 120V; Mechanical convection

Thermo Scientific Precision Gravity Oven

11-475-146 - Ea./\$1,622.00
Oven, Gravity Convection; Precision; Thermo Scientific; 120V

Thermo Scientific Precision High-Performance Ovens



13-248A - Ea./\$6,911.87
Oven, High Performance; Thermo Scientific Precision Model 605; 1.4 cu. ft.; Microprocessor control; Amb. +15C to 325C; Heatup 60 min.; Recovery 2.5 min.; Air changes 128/hr.; 2500w; 20.8A; 8538 BTU/hr.; 120V 50/60Hz

Thermo Scientific Precision Premium Heating and Drying Ovens



11-475-132 - Ea./\$1,839.00
Oven, Gravity Convection; Thermo Scientific Precision Premium; 2.5 cu. ft.; 120V
11-475-134 - Ea./\$2,158.00
3.75 cu. ft.; 120V; Gravity Convection
11-475-136 - Ea./\$2,375.00
5 cu. ft.; 120V; Gravity Convection
11-475-138 - Ea./\$2,267.00
2.5 cu. ft.; 120V 11A; Mechanical Convection
11-475-139 - Ea./\$2,416.00
2.5 cu. ft.; 120V 5.5A; Mechanical Convection
11-475-140 - Ea./\$2,698.00
3.75 cu. ft.; 120V; Mechanical Convection
11-475-142 - Ea./\$2,915.00
5 cu. ft.; 120V; Mechanical Convection

Thermo Scientific Precision Standard Heating and Drying Ovens

11-475-144 - Ea./\$1,406.00
Oven; Gravity Convection; Thermo Scientific Precision Standard; 2.5 cu ft; 120V
11-475-148 - Ea./\$1,946.00
5.0 cu ft; 120V

Vacuum Ovens

Fisher Scientific Isotemp Economy Vacuum Ovens



13-262-280A - Ea./\$1,703.95
Oven, Economy Vacuum; Fisher Scientific Isotemp; 0.67 cu. ft.; 120V 50/60Hz, 1000w, 8.4A; Vacuum: 0 to 30 in. Hg; With 2 adjustable shelves
13-262-285A - Ea./\$3,682.00
120V 14.2A 1700w

Fisher Scientific Isotemp Model 200 Oven Shelves

13-261-54 - Ea./\$109.30
Shelf, for Vacuum Oven; Fisher Scientific Isotemp Model 282

Fisher Scientific Isotemp Model 281A Vacuum Oven



13-262-50 - Ea./\$3,408.95
Oven, Vacuum; Fisher Scientific Isotemp; High Temperature; 120V 50/60Hz

Fisher Scientific Isotemp Model 282A Vacuum Oven



13-262-52 - Ea./\$6,205.45
Oven, Vacuum; Fisher Scientific Isotemp; Capacity: 1.5 cu.ft.; Full-view chamber door; Self-diagnostics; 7-day programmable timer; Auto time/temp controls; 2 shelves; 115V 50/60Hz

Photodocumentation Systems

Fotodyne FOTO/Analyst Express Zoom Lens Workstation



FD63115NP - Ea./\$3,972.71
Photodocumentation System, FOTO/Analyst Express; Zoom lens; Camera: 8-bit, B/W; PC; Without Printer; Hood mount system; Includes CCD-based camera, mini darkroom hood, frame grabber, EBr filter, controller, acquisition software
FD63315PNP - Ea./\$4,610.69
12-bit, B/W; PC

Fotodyne FOTO/Analyst Investigator Workstations

FD61510DL - Ea./\$9,936.88
Photodocumentation System, FOTO/Analyst Investigator Workstation; 8-bit; Dual Light
FD61510UV - Ea./\$8,972.86
8-bit; UV

Fotodyne FOTO/Analyst Luminary F/X Workstations, Dual WL



71-760-F2DLNP - Ea./\$24,007.75
Photodocumentation System; FOTO/Analyst Luminary/FX Workstation; Dual Wavelength UV, Dual Light; Camera: 4 Mpx w/motorized zoom; w/PC; 120V; Printer: No; Ethidium bromide filter
71-760-F2UVNP - Ea./\$23,288.03
UV; Camera: 4Mpx; Printer: No
F71720F2DL - Ea./\$24,100.00
Dual Wavelength UV, Dual Light; Camera: 2.0 Mpx; Printer: Yes
F71720F2DLN - Ea./\$23,192.75
Dual Wavelength UV, Dual Light; Camera: 2.0 Mpx; Printer: No
F71720F2UV - Ea./\$23,300.00
Dual Wavelength UV; Camera: 2.0 Mpx; Printer: Yes
F71720F2UVN - Ea./\$22,050.00
Dual Wavelength UV; Camera: 2.0 Mpx; Printer: No
F71740F2DL - Ea./\$31,600.00
Dual Wavelength UV, Dual Light; Camera: 1.4 Mpx; Printer: Yes
F71740F2DLN - Ea./\$30,350.00
Dual Wavelength UV, Dual Light; Camera: 1.4 Mpx; Printer: No
F71740F2UV - Ea./\$30,900.00
Dual Wavelength UV; Camera: 1.4 Mpx; Printer: Yes
F71740F2UVN - Ea./\$29,650.00
Dual Wavelength UV; Camera: 1.4 Mpx; Printer: No

Fotodyne FOTO/Analyst MiniVisionary Fixed Focus Hood Mount System

FD62310 - Ea./\$4,714.98
System, Photodocumentation, FOTO/Analyst MiniVisionary Hood Mount System; CCD camera; Hood; Controller; Ethidium bromide/coomassie; blue/methylene blue filters; Thermal printer; Cable; Support frame; 120V 60Hz

Tel: 1-800-766-7000

Fax: 1-800-926-1166

Web: www.fishersci.com

Fotodyne Thermal Printer for use with FOTO/Analyst Systems and Workstations



FD601040 - Ea./\$1,560.56
Thermal Printer, Mitsubishi P91W; Fotodyne; for use with FOTO/Analyst Systems and Workstations

Pipetters - Manual

Multichannel Manual Pipetters [Fixed Volume]

Thermo Scientific Finnpiquette F2 Multichannel Pipetters



14-386-359 - Ea./\$662.44
Pipetter; Finnpiquette F2 Multichannel; Thermo Scientific; Variable Volume; 8 channel; 1-10 μ L
14-386-360 - Ea./\$662.44
8 channel; 5-50 μ L
14-386-361 - Ea./\$662.44
8 channel; 10-100 μ L
14-386-362 - Ea./\$662.44
8 channel; 30-300 μ L
14-386-363 - Ea./\$810.22
12 channel; 1-10 μ L
14-386-364 - Ea./\$810.22
12 channel; 5-50 μ L
14-386-365 - Ea./\$810.22
12 channel; 10-100 μ L
14-386-366 - Ea./\$810.22
12 channel; 30-300 μ L
14-386-367 - Ea./\$856.08
16 channel; 1-10 μ L
14-386-368 - Ea./\$856.08
16 channel; 5-50 μ L

Multichannel Manual Pipetters [Variable Volume]

Thermo Scientific Finnpiquette F1 Multichannel Pipetters



14-386-349 - Ea./\$704.32
Pipetter; Finnpiquette F1 Multichannel; Thermo Scientific; Variable Volume; 8 channel; 1-10 μ L
14-386-350 - Ea./\$704.32
8 channel; 5-50 μ L
14-386-351 - Ea./\$704.32
8 channel; 10-100 μ L
14-386-352 - Ea./\$704.32
8 channel; 30-300 μ L
14-386-353 - Ea./\$862.54
12 channel; 1-10 μ L
14-386-354 - Ea./\$862.54
12 channel; 5-50 μ L
14-386-355 - Ea./\$862.54
12 channel; 10-100 μ L
14-386-356 - Ea./\$862.54
12 channel; 30-300 μ L
14-386-357 - Ea./\$913.58
16 channel; 1-10 μ L
14-386-358 - Ea./\$913.58
16 channel; 5-50 μ L

Single Channel Manual Pipetters [Fixed Volume]

Fisherbrand Finnpiquette II Fixed-Volume Pipetters



- 14-487-65** - Ea./\$159.65
Pipetters; Fisherbrand; Finnpiquette II; Fixed-volume; Ideal; Comfort; Lightweight handle with finger rest; Fully autoclavable; Patented soft-touch tip ejector; Easy in-lab calibration and service; Volume: 1μL
- 14-487-66** - Ea./\$159.65
Volume: 2μL
- 14-487-67** - Ea./\$159.65
Volume: 5μL
- 14-487-68** - Ea./\$159.65
Volume: 10μL
- 14-487-69** - Ea./\$159.65
Volume: 20μL
- 14-487-70** - Ea./\$159.65
Volume: 25μL
- 14-487-71** - Ea./\$159.65
Volume: 50μL
- 14-487-72** - Ea./\$159.65
Volume: 100μL
- 14-487-73** - Ea./\$159.65
Volume: 200μL
- 14-487-74** - Ea./\$159.65
Volume: 250μL
- 14-487-75** - Ea./\$159.65
Volume: 500μL
- 14-487-76** - Ea./\$156.55
Volume: 1000μL
- 14-487-77** - Ea./\$159.65
Volume: 2000μL
- 14-487-78** - Ea./\$159.65
Volume: 3000μL
- 14-487-79** - Ea./\$159.65
Volume: 5000μL
- 14-487-80** - Ea./\$159.65
Volume: 10mL

Thermo Scientific Finnpiquette F1 Fixed-Volume Pipetters



- 14-386-323** - Ea./\$227.25
Pipetter; Finnpiquette F1; Thermo Scientific; Fixed Volume; Single Channel; 1μL
- 14-386-324** - Ea./\$233.72
5μL
- 14-386-325** - Ea./\$233.72
10μL
- 14-386-326** - Ea./\$233.72
25μL
- 14-386-327** - Ea./\$233.72
50μL
- 14-386-328** - Ea./\$233.72
100μL
- 14-386-329** - Ea./\$233.72
250μL
- 14-386-330** - Ea./\$227.25
500μL
- 14-386-331** - Ea./\$233.72
1000μL
- 14-386-332** - Ea./\$233.72
2000μL
- 14-386-333** - Ea./\$233.72
3000μL
- 14-386-334** - Ea./\$233.72
5000μL
- 14-386-335** - Ea./\$233.72
10000μL

Thermo Scientific Finnpiquette F2 Fixed-Volume Pipetters



- 14-386-336** - Ea./\$212.10
Pipetter; Finnpiquette F2; Thermo Scientific; Fixed Volume; Single Channel; 1μL
- 14-386-337** - Ea./\$218.40
5μL
- 14-386-338** - Ea./\$218.40
10μL
- 14-386-339** - Ea./\$218.40
25μL
- 14-386-340** - Ea./\$218.40
50μL
- 14-386-341** - Ea./\$218.40
100μL
- 14-386-342** - Ea./\$218.40
250μL
- 14-386-343** - Ea./\$218.40
500μL
- 14-386-344** - Ea./\$218.40
1000μL
- 14-386-345** - Ea./\$218.40
2000μL
- 14-386-346** - Ea./\$218.40
3000μL
- 14-386-347** - Ea./\$218.40
5000μL
- 14-386-348** - Ea./\$218.40
10000μL

Single Channel Manual Pipetters [Variable Volume]

Thermo Scientific Finnpiquette F1 Adjustable-Volume Pipetters



- 14-386-300** - Ea./\$319.30
Pipetter; Finnpiquette F1; Thermo Scientific; Variable Volume; Single Channel; 0.2-2μL, micro
- 14-386-301** - Ea./\$319.30
0.5-5μL, micro
- 14-386-302** - Ea./\$319.30
1-10μL, micro
- 14-386-303** - Ea./\$310.00
1-10μL
- 14-386-304** - Ea./\$310.00
2-20μL, micro
- 14-386-305** - Ea./\$310.00
2-20μL
- 14-386-306** - Ea./\$310.00
10-100μL
- 14-386-307** - Ea./\$310.00
20-200μL
- 14-386-308** - Ea./\$310.00
30-300μL
- 14-386-309** - Ea./\$310.00
100-1000μL
- 14-386-310** - Ea./\$319.30
0.5-5mL
- 14-386-311** - Ea./\$319.30
1-10mL

Thermo Scientific Finnpiquette F2 Adjustable-Volume Pipetters



- 14-386-312** - Ea./\$294.01
Pipetter; Finnpiquette F2; Thermo Scientific; Variable Volume; Single Channel; 0.2-2µL, micro
- 14-386-313** - Ea./\$294.01
0.5-5µL, micro
- 14-386-314** - Ea./\$294.01
1-10µL, micro
- 14-386-315** - Ea./\$294.01
1-10µL
- 14-386-316** - Ea./\$294.01
2-20µL, micro
- 14-386-317** - Ea./\$294.01
2-20µL
- 14-386-318** - Ea./\$294.01
10-100µL
- 14-386-319** - Ea./\$294.01
20-200µL
- 14-386-320** - Ea./\$294.01
100-1000µL
- 14-386-321** - Ea./\$294.01
0.5-5mL
- 14-386-322** - Ea./\$294.01
1-10mL

Power Supplies

FisherBiotech Electrophoresis Power Supplies



- FB-200Q** - Ea./\$985.38
Power supplies; FisherBiotech; 120V; High Current; Maximum voltage: 200V; Maximum current: 2.0A; Maximum power: 200w; No of jacks: 4; Modes: voltage or current; Timer: 99 hr. 59 min.; 12L x 10.75W x 5.25 in. H (31 x 27 x 13.3cm)
- FB3-00Q** - Ea./\$488.47
120V; Maximum voltage: 300V
- FB-1000Q** - Ea./\$1,298.46
120V; Maximum voltage: 1000V
- FB-3000Q** - Ea./\$2,233.40
120V; Maximum voltage: 3000V; Maximum power: 400w; No of jacks: 4

Thermo Scientific Electrophoresis Power Supplies



- FB-105** - Ea./\$677.56
Electrophoresis Power Supply, Thermo Scientific; Compact, Model 105; Constant Voltage in Nominal 10V steps from 20 to 250V, Output Current 300mA at 150-250V, 500mA below 150V
- FBEC200XL** - Ea./\$1,564.00
120V; Maximum voltage: 200V; With automatic crossover
- FBEC300XL** - Ea./\$576.89
Maximum Voltage 300V
- FBEC1000XL** - Ea./\$1,516.00
Maximum Voltage 1000V
- FBEC3000XL** - Ea./\$2,606.00
Maximum Voltage 3000V

Refrigerators and Freezers

Freezers

Fisher Scientific Isotemp Explosion-Proof Freezers



- 13-986-150** - Ea./\$3,788.43
Freezer; Explosion-proof; Fisher Scientific Isotemp; -20 to -12deg;C; 20.6 cu. ft.; Upright; 115V 60Hz

Fisher Scientific Special-Purpose Undercounter Freezers

- 97-925-1** - Ea./\$2,772.28
Freezer; Flammable-materials Storage; Fisher Scientific Isotemp; 5.6 cu. ft.; -20 to -15deg;C; Manual defrost; Shelves: 3 fixed door; 3 fixed interior; Meets NFPA requirements
- 97-928-1** - Ea./\$2,945.00
Explosion-proof

Refrigerators and Refrigerator Freezers - Full Size

Fisher Scientific Isotemp Chromatography Refrigerators



- 13-986-127G** - Ea./\$6,824.04
Refrigerator; Chromatography; Fisher Scientific Isotemp; Basic; 27 cu. ft.; 1 hinged glass door; 1 to 12deg;C; 115V 60Hz
- 13-986-127GA** - Ea./\$8,427.70
With recorder and alarm; 27 cu. ft.
- 13-986-138G** - Ea./\$6,842.18
Basic; 38 cu. ft.; 2 sliding glass doors
- 13-986-138GA** - Ea./\$8,136.60
With recorder and alarm; 38 cu. ft.
- 13-986-145G** - Ea./\$7,981.19
Basic; 45 cu. ft.; 2 sliding glass doors
- 13-986-145GA** - Ea./\$10,051.61
With recorder and alarm; 45 cu. ft.
- 13-986-149G** - Ea./\$8,652.66
Basic; 49 cu. ft.; 2 hinged glass doors
- 13-986-149GA** - Ea./\$10,797.97
With recorder and alarm; 49 cu. ft.
- 13-986-172G** - Ea./\$10,883.28
Basic; 72 cu. ft.; 3 hinged glass doors
- 13-986-172GA** - Ea./\$12,991.27
With recorder and alarm; 72 cu. ft.

Fisher Scientific Isotemp Plus Chromatography Refrigerators



- 13-986-134** - Ea./\$7,196.18
Refrigerator; Chromatography; Fisher Scientific Isotemp Plus; Basic; 23.1 cu. ft.; 1 hinged glass door; 1 to 12deg;C; 115V 60Hz
- 13-986-134A** - Ea./\$7,952.14
With alarm; 23.1 cu. ft., 1 hinged glass door; 115V
- 13-986-134RA** - Ea./\$8,813.68
With recorder and alarm; 23.1 cu. ft., 1 hinged glass door; 115V
- 13-986-136S** - Ea./\$9,346.82
Basic; 45.5 cu. ft., 2 sliding glass doors; 115V
- 13-986-136SA** - Ea./\$10,114.51
With alarm; 45.5 cu. ft., 2 sliding glass doors; 115V
- 13-986-136SR** - Ea./\$10,973.91
With recorder; 45.5 cu. ft., 2 sliding glass doors; 115V
- 13-986-136SRA** - Ea./\$11,708.57
With recorder and alarm; 45.5 cu. ft., 2 sliding glass doors; 115V
- 13-986-138** - Ea./\$9,859.69
Basic; 46.6 cu. ft.; 2 hinged glass doors; 6 full, 2 half shelves; 115V
- 13-986-138A** - Ea./\$10,522.88
With alarm; 46.6 cu. ft., 2 hinged glass doors; 115V
- 13-986-138RA** - Ea./\$12,364.32
With recorder and alarm; 46.6 cu. ft., 2 hinged glass doors; 115V
- 13-986-140** - Ea./\$12,404.83
Basic; 74 cu. ft., 3 hinged glass doors; 115V
- 13-986-140A** - Ea./\$13,096.84
With alarm; 74 cu. ft., 3 hinged glass doors; 115V
- 13-986-140RA** - Ea./\$14,861.49
With recorder and alarm; 74 cu. ft., 3 hinged glass doors; 115V

Fisher Scientific Isotemp Explosion-Proof Refrigerator



13-986-153 - Ea./\$4,360.30
Refrigerator; Explosion-proof; Fisher Scientific Isotemp; 20.6 cu. ft.; 2 to 10°C; 1 hinged solid door; Manual defrost; CFC free; 115V 60Hz

Fisher Scientific Isotemp General-Purpose Refrigerator



13-986-151B - Ea./\$3,084.03
Refrigerator; General-purpose; Fisher Scientific Isotemp; 17 cu. ft.; 2 to 8°C; 1 hinged solid door; 4 wire shelves; Manual defrost; CFC-free; 115V 60Hz

Fisher Scientific Isotemp Explosion-Proof Refrigerator/Freezers



13-986-116D - Ea./\$4,890.92
Refrigerator/Freezer; Explosion-proof; Fisher Scientific Isotemp; 8.5 cu. ft. Refrigerator; 2.5 cu. ft. Freezer; 2 solid hinged doors; 115V 60Hz

Fisher Scientific Isotemp General-Purpose Refrigerator/Freezer



13-986-106A - Ea./\$2,881.51
Refrigerator/Freezer; General-purpose; Fisher Scientific Isotemp; 17.9 cu. ft.; Refrigerator: 2 to 13°C; Freezer: -18 to -10°C; 2 hinged doors; CFC-free; With warning label; 115V 60Hz

Fisher Scientific Isotemp Flammable-Materials Storage Refrigerator/Freezers



13-986-111D - Ea./\$3,276.92
Refrigerator/Freezer; Flammable-materials Storage; Fisher Scientific Isotemp; Basic; 11 cu. ft.; 2 hinged solid doors; 115V 60Hz

Fisher Scientific Isotemp Lab Refrigerators



13-986-227G - Ea./\$5,227.22
Refrigerator; General-purpose; Fisher Scientific Isotemp; Basic; 27 cu. ft.; 1 to 12°C; 1 hinged glass lockable door; 4 full-size shelves; 115V 60Hz
13-986-227GA - Ea./\$6,850.71
With recorder and alarm; 27 cu. ft.; 1 hinged glass lockable door
13-986-227R - Ea./\$5,281.16
Basic; 27 cu. ft.; 1 hinged solid lockable door
13-986-227RA - Ea./\$6,964.79
With recorder and alarm; 27 cu. ft.; 1 hinged solid lockable door
13-986-238G - Ea./\$6,102.20
Basic; 38 cu. ft.; 2 hinged glass lockable doors
13-986-238GA - Ea./\$7,774.07
With recorder and alarm; 38 cu. ft.; 2 sliding glass lockable doors
13-986-245G - Ea./\$7,532.19
Basic; 45 cu. ft.; 2 hinged glass lockable doors
13-986-245GA - Ea./\$9,218.86
With recorder and alarm; 45 cu. ft.; 2 sliding glass lockable doors
13-986-249G - Ea./\$7,269.74
Basic; 49 cu. ft.; 2 hinged glass lockable doors
13-986-249GA - Ea./\$9,323.34
With recorder and alarm; 49 cu. ft.; 2 hinged glass lockable doors
13-986-249R - Ea./\$7,133.27
Basic; 49 cu. ft.; 2 hinged solid lockable doors
13-986-249RA - Ea./\$9,129.29
With recorder and alarm; 49 cu. ft.; 2 hinged solid lockable doors
13-986-272G - Ea./\$9,459.98
Basic; 72 cu. ft.; 3 hinged glass lockable doors
13-986-272GA - Ea./\$11,517.42
With recorder and alarm; 72 cu. ft.; 1 hinged glass lockable door

Fisher Scientific Isotemp Flammable-Materials Storage Refrigerators



13-986-152 - Ea./\$3,695.64
Refrigerator; Flammable-materials Storage; Fisher Scientific Isotemp; 20.6 cu. ft.; 2 to 10°C; 1 hinged solid door; Manual defrost; 115V 60Hz
13-986-428RR - Ea./\$7,490.88
30 cu. ft.; With recorder
13-986-428RA - Ea./\$7,907.86
30 cu. ft.; With recorder and alarm
13-986-450R - Ea./\$7,603.50
50 cu. ft.; Basic
13-986-450RR - Ea./\$9,524.86
50 cu. ft.; With recorder
13-986-450RA - Ea./\$9,942.84
50 cu. ft.; With recorder and alarm

Fisher Scientific Isotemp Plus Lab Refrigerators: 115V


13-986-120 - Ea./\$6,270.66
Refrigerator; General-purpose; Fisher Scientific Isotemp Plus; Basic; 23.1 cu. ft.; 1 to 12°C; 1 hinged solid lockable door; 115V 60Hz

13-986-120A - Ea./\$7,008.51
With alarm; 23.1 cu. ft., 1 hinged solid lockable door

13-986-120R - Ea./\$7,904.17
With recorder; 23.1 cu. ft., 1 hinged solid lockable door

13-986-120RA - Ea./\$8,675.06
With recorder and alarm; 23.1 cu. ft.; 1 hinged solid lockable door

13-986-122 - Ea./\$7,512.86
Basic; 30 cu. ft.; 1 hinged solid lockable door

13-986-122A - Ea./\$8,294.41
With alarm; 30 cu. ft.; 1 hinged solid lockable door

13-986-122R - Ea./\$9,241.26
With recorder; 30 cu. ft.; 1 hinged solid lockable door

13-986-122RA - Ea./\$10,014.28
With recorder and alarm; 30 cu. ft.; 1 hinged solid lockable door

13-986-124 - Ea./\$8,017.19
Basic; 30 cu. ft.; 1 hinged glass lockable door

13-986-124A - Ea./\$8,644.15
With alarm; 30 cu. ft.; 1 hinged glass lockable door

13-986-124R - Ea./\$9,552.61
With recorder; 30 cu. ft.; 1 hinged glass lockable door

13-986-124RA - Ea./\$10,393.87
With recorder and alarm; 30 cu. ft.; 1 hinged glass lockable door

13-986-128S - Ea./\$8,805.24
Basic; 45.4 cu. ft.; 2 sliding glass lockable doors

13-986-128SA - Ea./\$9,428.92
With alarm; 45.4 cu. ft.; 2 sliding glass lockable doors

13-986-128SR - Ea./\$10,217.93
With recorder; 45.4 cu. ft.; 2 sliding glass lockable doors

13-986-126 - Ea./\$8,848.86
Basic; 46.6 cu. ft.; 2 hinged solid lockable doors

13-986-126A - Ea./\$9,374.54
With alarm; 46.6 cu. ft.; 2 hinged solid lockable door

13-986-126R - Ea./\$8,936.30
With recorder; 46.6 cu. ft.; 2 hinged solid lockable door

13-986-126RA - Ea./\$11,171.19
With recorder and alarm; 46.6 cu. ft.; 2 hinged solid lockable door

13-986-130 - Ea./\$11,318.31
Basic; 74 cu. ft.; 3 hinged solid lockable doors

13-986-130A - Ea./\$11,868.50
With alarm; 74 cu. ft.; 3 hinged solid lockable doors

13-986-130RA - Ea./\$13,496.69
With recorder and alarm; 74 cu. ft.; 3 hinged solid lockable doors

13-986-132 - Ea./\$12,495.45
Basic; 74 cu. ft.; 3 hinged glass lockable doors

13-986-132A - Ea./\$13,007.27
With alarm; 74 cu. ft.; 3 hinged glass lockable doors

13-986-132RA - Ea./\$14,814.57
With recorder and alarm; 74 cu. ft.; 3 hinged glass lockable doors

Thermo Scientific Revco Explosion-Proof Refrigerator/Freezers


13-990-337 - Ea./\$6,622.95
Refrigerator/Freezer, Explosion-proof; Thermo Scientific Revco: Meet NFPA and OSHA standards; Refrigerator 8.6 cu. ft., 2° to 8°C; Freezer 2.4 cu. ft., -18° to 12°C; 115V/60Hz

Refrigerators and Refrigerator Freezers - Undercounter
Fisher Scientific General-Purpose Undercounter Refrigerator


97-920-1 - Ea./\$1,288.05
Refrigerator; General Purpose; Fisher Scientific Isotemp; Undercounter; 5.6 cu. ft.; 2 to 7°C; 1 key-locked door with flat door liner (opens on left); 3 shelves; 120VAC 60Hz

Fisher Scientific General-Purpose Undercounter Refrigerator/Freezers


97-960-1 - Ea./\$1,453.32
Refrigerator/Freezer; General-purpose; Fisher Scientific; Undercounter; 5.6 cu. ft.; -26 to -15°C; Hydraulic thermostat; Base-mounted compressor; 3 fixed shelves; 120V 60Hz

Fisher Scientific Special-Purpose Undercounter Refrigerator/Freezers


97-935-1 - Ea./\$2,556.89
Refrigerator/Freezer; Flammable-materials Storage; Fisher Scientific; Undercounter; 5.6 cu. ft.; -6 to 7°C; Electric fan free; Door with three shelves opens from left; 2 adjustable wire shelves; 120V 60Hz

97-952-1 - Ea./\$2,662.46
Explosion-proof

Fisher Scientific Special-Purpose Undercounter Refrigerators


97-938-1 - Ea./\$2,599.53
Refrigerator; Flammable-materials Storage; Fisher Scientific; Undercounter; 5.6 cu. ft.; 2 to 7°C; 1 door with flat door liner; 3 shelves; Aluminum evaporator coil; Meets NFPA; 120VAC 60Hz

97-950-1 - Ea./\$2,877.80
Explosion-proof

Ultra Low Temperature Freezers [Upright]

Thermo Scientific Revco Elite PLUS -86C Upright Freezers



13-989-704 - Ea./\$14,385.00
Freezer, Ultralow -86degC; Thermo Scientific Revco Elite PLUS; 17.2 cu. ft.; Mid-range control platform; 115V 60Hz, 1A
13-989-706 - Ea./\$15,260.00
20.2 cu. ft.; 115V 60Hz, 1A
13-989-715 - Ea./\$16,104.00
24.4 cu. ft.; 115V 60Hz, 1A

Thermo Scientific Revco Ultima PLUS -86C Upright Freezers



13-989-717 - Ea./\$15,459.00
Freezers, -86°C to -50°C; Thermo Scientific Revco Ultima PLUS; Upright, 17.2 cu. ft.; Programmable microprocessor control; Monitoring and alarm systems; 115V 60Hz
13-989-719 - Ea./\$16,401.00
20.2 cu. ft.; 115V 60Hz
13-989-721 - Ea./\$17,223.00
24.4 cu. ft.; 115V 60Hz

Thermo Scientific Revco Ultima PLUS HD Ultra-Low Temperature Upright Freezers



13-988-230 - Ea./\$18,260.00
Freezer, Upright; Thermo Scientific Revco Ultima PLUS HD; 24.8 cu. ft. (702L); -50 to -80C; 115V 60Hz

Thermo Scientific Revco Value PLUS -86C Upright Freezers



13-989-702 - Ea./\$13,593.00
Freezer, Ultralow -86degC; Thermo Scientific Revco Value PLUS; Basic control platform; 20.2 cu.ft.; 115V 60Hz
13-989-713 - Ea./\$14,505.00
24.2 cu.ft.; 115V 60Hz
13-989-723 - Ea./\$12,803.00
17.2 cu.ft.; 115V 60Hz

Robotic Systems

Robotic Automation Upgrade

Neutec Automation Upgrade

14-910-324 - Ea./\$9,600.00
Automation Upgrade; Neutec

Shakers

Platform Shakers [Incubated]

Fisher Scientific Microtube Thermal Mixer



15-600-115 - Ea./\$2,052.89
Mixer, MicrotubeThermal; Benchtop; Fisher Scientific; Microtube shaker, incubator and Thermal Mixer; Speed 250-1400rpm; Orbit: 2mm; Temp. range: Ambient +5 to 100C; Timer: 1 min. to 96 hrs; 115/230V 60Hz, 0.5A
15-600-116 - Ea./\$87.68
Cool Pack System; ForThermal Mixer

New Brunswick Excella E24/E24R Temperature-Controlled Benchtop Shakers



14-285-732 - Ea./\$6,080.00
Shaker, Nonrefrigerated; Incubated; Benchtop; Model Excella E24; 120/100v, 3/4 in. Orbit; 7° Above Ambient to 60°; 50 to 400rpm
14-285-733 - Ea./\$8,285.00
Refrigerated

New Brunswick Excella E25/E25R Temperature-Controlled Console Shakers



14-285-734 - Ea./\$10,415.00
Shaker, Incubated, Floor Model NBS Excella E25, 115v; 18L x 30 in.W; 7° Above Ambient to 60°; 50 to 400rpm
14-285-735 - Ea./\$12,475.00
Refrigerated

Platform Shakers [Orbital]

New Brunswick Excella E1/E2 Benchtop Open-Air Shakers



14-285-729 - Ea./\$1,725.00
Shaker, Platform; New Brunswick Excella E1; Analog; Orbital, 16 x 11 in. W; 50 to 400rpm; 100/120v 50/60Hz; LED Display
14-285-730 - Ea./\$1,970.00
Digital; Model E2

New Brunswick Excella E5 and E10 Large-Capacity Open-Air Shakers



14-285-731 - Ea./\$4,720.00
Shaker, Platform; New Brunswick Excella E10; Orbital, Rectangular platform; 30W x 18 in.W; 50 to 400rpm; 110/120 to 50/60Hz; LED Display
14-285-736 - Ea./\$2,865.00
18 x 18 in. W

Platform Shakers [Rocking]

Thermo Scientific Small Bidirectional Rotator



14-271-8Q - Ea./\$649.20
Rotator, Bidirectional, Small; Thermo Scientific; 10°; angle through 360°; rotation; Speed 30rpm; 120V 50/60Hz

Thermo Scientific Vari-Mix and Speci-Mix Test Tube Rockers



12-815-3Q - Ea./\$775.32
Rocker, Test Tube; Thermo Scientific Vari-Mix; Adjustable speed 2 to 20rpm; Tube capacity 16 (10-20mm); 7 (22-30mm); 120V 50Hz, 0.08A
12-815-6Q - Ea./\$432.04
Fixed 18rpm; Capacity 8 (10-20mm), 3 (22-30mm); 120V 50/60Hz, 0.03A

Platform Shakers [Rotating]

Thermo Scientific Lab Rotators



11-671-50Q - Ea./\$1,051.86
Shaker, Rotating; Thermo Scientific; 0.75 in. orbit; Speed range 40-220rpm; Load capacity 10 lb.; 60-min. timer; Autoclavable nonslip mat; 9 x 9 in. platform; 120V 50/60Hz; w/power cord; 24-mo. warranty
11-671-52Q - Ea./\$1,056.00
12 x 12 in. platform; 120V

Thermo Scientific Lab-Line Titer Plate Shakers



14-271-9 - Ea./\$1,072.50
Titer Plate Shaker; Thermo Scientific; 40 to 1110rpm; 0.12in. orbit; With timer; Max. load 2 lb.; 4 standard 96-well or deepwell plates; 120V 60Hz

Thermo Scientific Large Bidirectional Rotators



14-512-28Q - Ea./\$1,316.00
Shaker, Rotating; Thermo Scientific; Speed 0-25rpm; 3-dimensional rotation 6°; angle; Continuous-duty motor; Nonskid mat; Platform 16 x 14 in.; 120V 50/60Hz. 0.4A; CE

Thermo Scientific Multi-Tube Rotators



14-041-20Q - Ea./\$647.91
Rotator, Multi-Tube; Thermo Scientific; Fixed speed 30rpm; Accommodates (14) 7, 10 and 15 mL tubes; Metal body; White silicone, nonskid, dimpled platform; D x H x W: 8.5 x 8.1 x 8.8 in.; 120V 60Hz, 0.3A; 40W

Vortex Shakers

Fisher Scientific Vortex Mixers



02-215-360 - Ea./\$274.36
Mixer, Vortex; Fisher Scientific; Fixed-speed; 3200rpm; For flasks, beakers, tubes, and microwell plates; Includes cup head and 3 in. head w/cover; 120V 50/60Hz; 75w
02-215-365 - Ea./\$336.93
Analog; 100-3200rpm; 120V
02-215-370 - Ea./\$402.99
Digital; 500-3000rpm; 120V
02-215-375 - Ea./\$542.37
Pulsing; 500 to 3000rpm; 120V

Thermo Scientific MaxiMix I Vortex Mixer



12-815-50 - Ea./\$354.62
Mixer, Vortex; Thermo Scientific MaxiMix I; Speed 3000rpm; 4 in. mixing surface; Mixes up to 4 tubes at once or small flasks; 120V 50/60Hz, 0.5A

Thermo Scientific MaxiMix II Vortex Mixer



12-814-5Q - Ea./\$454.07
Mixer, Vortex; Thermo Scientific MaxiMix II; Variable speed: 100-3000rpm; Continuous or touch modes; Incl. Foam pad for flasks and multiple tubes, single-cup tube and power cord; 120V 50/60Hz, 0.75A
11-500-4F - Ea./\$8.30
Pad for Maxi Mix II Vortex Mixers

Thermo Scientific MaxiMix III Vortex Mixer



12-815-20Q - Ea./\$1,324.00
Mixer, Vortex; Thermo Scientific MaxiMix III; Speed 100-2200rpm; With soft foam top, and optional accessories that include utility tray, flask holder, and universal holder; 120V 50/60Hz, 0.4A
12-815-20 - Ea./\$1,324.00
120V, 50/60Hz

Thermo Scientific MaxiMix Plus Vortex Mixer



12-815-18Q - Ea./\$397.36
Mixer, Vortex; Thermo Scientific Maxi Mix; 120V, 50/60Hz, 0.46A

Thermo Scientific Vari-Mix Platform Mixer



09-047-113Q - Ea./\$1,250.87
Rocker, Platform; Thermo Scientific Vari-Mix; Adjustable speed 5-30rpm; Adjustable rocking angle 1-48°; from horizontal; Capacity 15 lb.; 120V 50/60Hz, 0.1A

Slide Stainers

Neutec Poly Stainer



14-910-357 - Ea./\$9,504.00
Staining System; Neutec; Poly Stainer; Microbiology and histology; Programmable; 115VAC 60Hz, 250W; Inc. One slide basket, four plastic containers with lids

Sterilizers and Autoclaves - Benchtop

Thermo Scientific Models MC8 and MC10 Steam Sterilizers



14-488-1 - Ea./\$7,799.26
Thermo Scientific; Model: MC10; Cycle Time: Cold, 40 min./Warm, 35 min.
14-488-2 - Ea./\$8,424.30
Sterilizer with Non-Recirculator

Thermo Scientific SterileMax Tabletop Sterilizers



14-488-24 - Ea./\$9,681.07
Sterilizer; SterileMax; Thermo Scientific; Tabletop; Holds three 2L flasks; 4 preset cycles; Builtin water pump; Insulated chamber; 3 chamber locks; Integral access port; Includes 1 rack, 1 lg, 1sm. tray, line cord, plug; With printer; 120V 50/60Hz
14-490-1 - Ea./\$8,744.23
Without printer; 120V

Heidolph/Tuttnauer Tabletop Autoclaves



02-964-1 - Ea./\$4,067.36
Autoclave; Tabletop; Heidolph/Tuttnauer; Model 1730M; Self-contained design with refillable reservoir controls water purity for sterilization; 120V 50/60Hz; 1050w. With analog controls
02-964-5 - Ea./\$5,761.19
Model 2340E, 120V 1400w, With Electronic Controls
02-964-7 - Ea./\$6,214.32
Model 2340EP, 120V 1400w, With Electronic Controls and printer
02-964-3 - Ea./\$4,649.95
Model 2340M, 120V 1400w, With Analog Controls
02-964-9 - Ea./\$6,397.73
Model 2540E, 120V 1400w, With Electronic Controls
02-964-10 - Ea./\$6,872.43
Model 2540EP, 120V With Electronic Controls and printer
02-964-19 - Ea./\$5,547.47
Model 2540M, 120V 1400w, With Analog Controls

Stirrers

Magnetic Stirrers

Fisher Scientific Isotemp Basic Magnetic Stirrers



11-100-16S - Ea./\$280.80
Stirrer, Isotemp; Fisher Scientific; Basic Magnetic Stirrers; Analog; Stir range 60-1200rpm; 4x4in., Ceramic, 120V, 50/60Hz; Load capacity: 25 lb. (11kg); Includes: Detachable 3-wire line cord and plug, PTFE stir bar
11-100-49S - Ea./\$271.30
7x7in., Ceramic, 120V
11-100-100S - Ea./\$414.88
10x10in., Ceramic, 120V
11-200-49S - Ea./\$311.42
7x7in., Aluminum, 120V

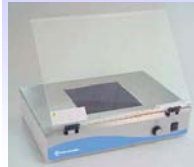
Fisher Scientific Isotemp Digital Magnetic Stirrers



11-300-49S - Ea./\$711.40
Stirrer, Isotemp; Fisher Scientific; Digital; Speed control from 60-1200rpm; Ceramic top; 7.25 x 7.25 in. top plate; 120V 50/60Hz; Load capacity: 25 lb. (11kg); Includes: Detachable 3-wire line cord and plug, PTFE stir bar

Transilluminators

FisherBiotech Ultraviolet Transilluminators



FBDLT88AQ - Ea./\$2,565.39
Transilluminator, Ultraviolet; FisherBiotech; Type: Variable Intensity-Dual Light UV and white light filter areas: 8 x 8 in.
FBT88AQ - Ea./\$1,712.36
Fixed Intensity; Filter Area: 8 x 8 in.
FBT816AQ - Ea./\$2,103.16
Fixed Intensity; Filter Area: 8 x 16 in.
FBTIV816AQ - Ea./\$2,282.79
Variable Intensity, Filter Area: 8 x 8 in.
FBTIV614AQ - Ea./\$1,872.02
Variable Intensity; Filter Area: 6 x 14 in.

Thermo Scientific Ultraviolet, Variable Intensity Transilluminators

FBTIV88AQ - Ea./\$2,050.63
Transilluminator, Ultraviolet; Thermo Scientific; Variable Intensity, 8 x 8 in Filter Area, (6) 15 W Tubes, Diffusing Screen 12 L x 21 3/4 W x 4 in H (30 x 55 x 10)

Instruments

Balances

Balances - Analytical

Denver Instrument Pinnacle Series Analytical Balances



01-913-81 - Ea./\$2,828.12
Balance, Analytical; Denver Pinnacle P-114; Auto calibration; Weighing Range: 0-110g; Readability: 0.1mg; Linearity: 0.2mg; Includes built-in overload, leveling bubble, sealed keypad, and weigh-below port; 115V
01-913-82 - Ea./\$3,260.72
Weighing Range: 0 to 210g
01-914-03 - Ea./\$3,693.32
Weighing Range: 0 to 310g

Denver Instrument Summit Series Analytical Balances



01-913-132 - Ea./\$4,148.80
Balance, Analytical, SI-215D.1, Capacity 60/210g, Readability 0.01/0.1mg, with internal calibration
01-915-11 - Ea./\$2,301.62
Capacity 60g, with Internal Calibration
01-915-12 - Ea./\$2,502.25
Capacity 110g, with Internal Calibration
01-915-13 - Ea./\$2,844.62
Capacity 230g, with Internal Calibration
01-915-24 - Ea./\$1,962.08
Capacity 60g, without Internal Calibration
01-915-25 - Ea./\$2,040.91
Capacity 110g, without Internal Calibration
01-915-26 - Ea./\$2,465.98
Capacity 230g, without Internal Calibration

Denver Instrument Timberline Analytical Balances



01-913-145 - Ea./\$1,590.75
Balance; Analytical; Denver Instrument Timberline;
Capacity: 60g; Model TP-64
01-913-146 - Ea./\$1,811.25
Capacity: 110g
01-913-147 - Ea./\$2,084.25
Capacity: 210g

Mettler Toledo AB-S/FACT Classic Plus Series Analytical Balances



01-916-250 - Ea./\$4,468.00
Balance, Analytical; Mettler Toledo; AB-S/FACT Classic Plus; 120g/31g x 0.1mg/0.01mg
01-916-251 - Ea./\$5,519.00
0 to 61g/0 to 220g

Mettler Toledo AL Series Analytical Balances



01-910-150 - Ea./\$1,759.00
Balance, Analytical; Mettler AL Series; Model AL54;
Capacity: 51g; Readability: 0.0001g; Simple operation;
Stored menu settings; 15 weigh units; Wide selection
of user programs, Battery backup for field use; Incl.
glass draft shield
01-910-152 - Ea./\$2,127.00
110G
01-910-154 - Ea./\$2,382.00
210G

Mettler Toledo Excellence Plus XP Analytical Balances



01-911-350 - Ea./\$8,295.00
Balance; Mettler XP Analytical Balance; 120g
Dual-Range; Readability: 0.1mg (at fine range:
0.01mg); SmartSens sensor for hands-free operation;
SmartScreen color display
01-911-351 - Ea./\$11,801.00
220g; SmartSens sensor; Model XP205
01-911-352 - Ea./\$10,470.00
220g; Dual-Range; Model XP205DR
01-911-353 - Ea./\$8,295.00
220g; SmartSens sensor; Model XP204
01-911-354 - Ea./\$9,702.00
520g; SmartSens sensor; Model XP504
01-911-355 - Ea./\$8,412.00
520g; Dual-Range; Model XP504DR

Mettler Toledo Excellence Plus XP Microbalances



01-910-014 - Ea./\$25,482.00
Balance, Ultramicro; Mettler Toledo; Capacity 2.1g;
Readability 0.1µg; Repeatability 0.25µg; Linearity
1µg; With color touch-screen display; Up to 10
shortcut keys; Setting time: <10 seconds; Connectivity:
Internet, bluetooth, and PS/2; Glass draft shi
01-910-015 - Ea./\$20,132.00
Capacity: 6.1g
01-910-670 - Ea./\$20,270.00
Capacity: 22g
01-910-671 - Ea./\$17,296.00
Capacity: 5.1g/22g
01-910-650 - Ea./\$24,020.00
Capacity: 52g
01-910-651 - Ea./\$22,019.00
Capacity: 11g/52g

Mettler Toledo Excellence XS Series Analytical Balances



01-910-320 - Ea./\$3,478.00
Balance, Analytical; Mettler XS Series; Model XS64;
17-5/8 L x 10-1/4 W x 12-1/2 in. H; 23-1/4 lb.; Weighing
range 0 to 61g; Readability: 0.1mg; Flexible surface;
slotted pan; ground system for static reduction
01-910-321 - Ea./\$4,176.00
Weighing range: 0 to 120g
01-910-322 - Ea./\$4,942.00
Weighing range: 0 to 120g/0 to 41g
01-910-323 - Ea./\$4,260.00
Weighing range: 0 to 220g/0 to 81g; Delta Range
01-910-324 - Ea./\$4,896.00
Weighing range: 0 to 220g
01-910-325 - Ea./\$6,099.00
Weighing range: 0 to 220g/0 to 81g

Mettler Toledo MX and UMX Series Analytical Micro Balances



01-910-001 - Ea./\$26,121.43
Balance, Analytical; Mettler Toledo UMX2; Weighing
range: 0-2100mg; Readability: 0.1µg; Maximum
resolution; Hands-free operation; Individual
configuration; Update via Internet
01-913-547 - Ea./\$27,500.00
Capacity: 2.1g; Readability 0.1µg

Mettler Toledo NewClassic MS Analytical Balances with Draftshield



01-910-200 - Ea./\$3,182.00
Balance, Analytical; Mettler Toledo; Draftshield;
Readability: 0.0001g; Repeatability (sd): 0.1mg; Usable
height of draft shield: 237mm; Model: MS104S;
Capacity: 120g
01-910-201 - Ea./\$3,859.00
Capacity: 220g
01-910-202 - Ea./\$4,370.00
Capacity 320g

Balances - Electronic Toploading

Denver Instrument Summit Series Electronic Toploading Balances



01-915-15 - Ea./\$1,935.00
Balance, Electronic Toploading; Denver Instrument
Summit; Capacity: 400g; Readability: 0.001g; Model
SI-403; Readability: 0.001g; Repeatability: 0.001g;
Linearity: 0.002g; Pan Size: 11.4cm

Denver Instrument Summit Series Electronic Toploading Balances: 2000-8000g



01-915-19 - Ea./\$1,487.25
Balance, Electronic Toploading; Summit Series;
Automatic internal calibration; Capacity: 2000g;
Readability: 0.01g; Model SI-2002; Readability: 0.01g;
Repeatability: 0.01g; Linearity: 0.02g; Pan Size: 17.8 x
17.8cm; Net Weight: 3.6kg
01-915-20 - Ea./\$1,676.12
Capacity: 4000g; Readability: 0.01g; Automatic
internal calibration;
01-915-21 - Ea./\$1,855.88
Capacity: 6000g; Readability: 0.01g; Automatic
internal calibration;
01-915-22 - Ea./\$1,456.88
Capacity: 4000g; Readability: 0.1g; Automatic internal
calibration;
01-915-23 - Ea./\$1,614.38
Capacity: 8000g; Readability: 0.1g; Automatic internal
calibration;

- 01-915-32** - Ea./\$1,206.58
Capacity: 2000g, Readability: 0.01g; without internal calibration;
- 01-915-33** - Ea./\$1,332.19
Capacity: 4000g, Readability: 0.01g; without internal calibration;
- 01-915-34** - Ea./\$1,545.34
Capacity: 6000g, Readability: 0.01g; without internal calibration;
- 01-915-35** - Ea./\$883.01
Capacity: 4000g, Readability: 0.1g; without internal calibration;
- 01-915-36** - Ea./\$990.05
Capacity: 8000g, Readability: 0.1g; without internal calibration;

Denver Instrument Timberline Toploading Balances



- 01-913-600** - Ea./\$835.48
Balance; Toploading; Denver Instrument Timberline; Capacity: 150g; TS-153
- 01-913-148** - Ea./\$1,092.42
Capacity: 320g; Readability 0.001g
- 01-913-149** - Ea./\$1,000.39
Capacity: 1500g; Readability 0.01g
- 01-913-150** - Ea./\$1,055.44
Capacity: 3100g; Readability 0.01g
- 01-913-151** - Ea./\$730.12
Capacity: 3100g; Readability 0.1g
- 01-913-152** - Ea./\$853.70
Capacity: 6100g; Readability 0.1g
- 01-913-153** - Ea./\$624.76
Capacity: 12,000g; Readability 0.1g
- 01-913-601** - Ea./\$1,044.35
Capacity: 150g; DS (draft shield); Readability 0.001g
- 01-913-602** - Ea./\$1,302.00
Capacity: 320g; DS (draft shield); Readability 0.001g

Mettler Toledo Balance PB Series Precision Balance

- 01-911-524** - Ea./\$2,021.00
Balance; PB303-S; Mettler Toledo; Protective cover; Interface RS232; Max 310g; Readability 0.001g; 245x321x236 mm WxDxH
- 01-911-527** - Ea./\$2,029.00
PB153-S precision balance; Max 151g; Readability 0.001g; 245x321x236mm WxDxH
- 01-911-529** - Ea./\$1,508.00
PB1501-S precision balance; Max 1510g; Readability 0.1g; 245x321x89mm WxDxH
- 01-911-528** - Ea./\$1,952.00
PB1502-S precision balance; Max 1510g; Readability 0.01g; 245x321x89mm WxDxH
- 01-911-525** - Ea./\$2,080.00
PB3002-S DeltaRange precision balance; Max 600g/3100g; Readability 0.01g/0.1g; 245x321x89mm WxDxH
- 01-911-526** - Ea./\$1,686.00
PB3002-S precision balance; Max 3100g; Readability 0.1g; 245x321x89mm WxDxH
- 01-911-521** - Ea./\$1,614.00
PB8000-S precision balance; Max 8100g; Readability 1g; 245x321x89mm WxDxH

Mettler Toledo Balance PL202-S Portable Balance

- 01-911-520** - Ea./\$950.00
Balance; PL202-S portable balance; Mettler Toledo; Max. 210.0g; Readability 0.01g; Interface RS232C optional; 194 x 225x 6mm WxDxH; Automatic shutoff; Piece counting; Percent weighing; Switching units

Mettler Toledo Classic Light Toploading Balances



- 01-910-156** - Ea./\$1,230.00
Balance, Electronic Toploading; Mettler Toledo; Capacity: 310g; Readability: 0.001g; Repeatability: 0.001g; Linearity: ±0.002g; Pan Size: 10cm; Simple to operate; Rugged, durable; Battery backup for use in field
- 01-910-160** - Ea./\$1,054.00
Capacity: 610g x 0.01g
- 01-910-162** - Ea./\$888.00
Capacity: 3100g x 0.1g
- 01-910-230** - Ea./\$778.00
Capacity: 620g x 0.1g
- 01-910-233** - Ea./\$1,344.91
Capacity: 6200g x 0.1g

Mettler Toledo Classic ML Balances

- 01-910-231** - Ea./\$1,010.00
Balance, Precision; Mettler Toledo; Model ML1501E; Readability: 0.1g; Capacity: 1520g; Strain Gauge Weighing Technology; Repeatability: 0.1g; Linearity: 0.2g; Pan: ~160mm; 290Lx184Wx86mmH

Mettler Toledo Excellence XS Series Balances-2100g to 6100g



- 01-910-406** - Ea./\$3,155.00
Balance, Electronic Toploading; XS Series; Mettler Toledo; Model XS2002S; 15.25L x 7.625 W x 3.25 in. H; 14.625 lb.; Weighing range 0 to 2100g; Readability: 0.01g; Linearity: 20mg; Large, square weighing pans; Fast, precise weighing results
- 01-910-407** - Ea./\$3,462.00
Weighing range: 0 to 4100g; Readability: 0.01g
- 01-910-408** - Ea./\$3,030.00
Weighing range: 0 to 800g/0 to 4100g; Readability: 0.01g/0.1g
- 01-910-409** - Ea./\$3,790.00
Weighing range: 0 to 6100g; Readability: 0.01g
- 01-910-410** - Ea./\$3,235.00
Weighing range: 0 to 1200g/0 to 6100g; Readability: 0.01g/0.1g
- 01-910-411** - Ea./\$2,517.00
Weighing range: 0 to 4100g; Readability: 0.1g

Mettler Toledo Excellence XS Series Balances-6100g to 10100g



- 01-910-412** - Ea./\$2,781.00
Balance, Precision; Mettler Toledo XS Series; Model XS6001S; Weighing Range: 0 to 6100g; Resolution: 0.1g; Repeatability: 80mg; Linearity: 60mg; Stabilization Time: 0.8 sec.; Tare Range: 0 to 6100g; Pan Size: 19 x 22.3cm
- 01-910-413** - Ea./\$3,008.00
Weighing range: 0 to 8100g
- 01-910-414** - Ea./\$3,235.00
Weighing range: 0 to 6100g; Resolution: 0.1g; Pan Size: 23.7 x 23.7cm
- 01-910-415** - Ea./\$2,627.00
Weighing range: 0 to 1200g/o to 6100g
- 01-910-416** - Ea./\$3,517.00
Weighing range: 0 to 10100g; Resolution: 0.1g
- 01-910-417** - Ea./\$2,606.00
Weighing range: 0 to 10100g; Resolution: 1g

Mettler Toledo NewClassic ML Precision Balances



- 01-910-224** - Ea./\$1,480.00
Balance, Precision; Mettler Toledo; New Classic ML; Model: ML203E; Readability: 0.1 mg; Capacity: 220g; Weighing Technology: MonoBloc; Repeatability: 0.001g; Linearity: 0.002mg; Pan: dia. 120mm; Balance Dimensions: 290L x 184W x 187Hmm
- 01-910-225** - Ea./\$1,565.00
Capacity: 320g; Weighing Technology: MonoBloc
- 01-910-226** - Ea./\$1,200.00
Capacity: 820g; Weighing Technology: Strain Gauge
- 01-910-227** - Ea./\$1,480.00
Capacity: 1520g; Weighing Technology: Strain Gauge
- 01-910-228** - Ea./\$1,849.00
Capacity: 3200g; Weighing Technology: MonoBloc
- 01-910-229** - Ea./\$1,975.00
Capacity: 4200g; Weighing Technology: MonoBloc

Mettler Toledo NewClassic MS High-Capacity Precision Balances



- 01-910-215** - Ea./\$3,100.00
Balance, Precision; Mettler Toledo; New Classic MS12001L; High-Capacity; Weighing pan dimensions: 170x200mm; Balance dimensions (LxWxH): 347x194x96mm; Electrical Requirements: 12V / 0.84A; Capacity: 12200g
- 01-910-216** - Ea./\$3,640.00
Capacity: 16200g
- 01-910-217** - Ea./\$4,510.00
Capacity: 32200g; Model MSMS32001L
- 01-910-218** - Ea./\$3,195.00
Capacity: 32200g; Model MS32000L

01-910-219 - Ea./\$2,495.00
Capacity: 15kg
01-910-220 - Ea./\$2,795.00
Capacity: 24kg

Mettler Toledo NewClassic MS Precision 0.01g Balances



01-910-207 - Ea./\$2,105.00
Balances, Precision; Mettler Toledo; New Class MS1602S; Readability: 0.1g; Linearity: 0.2g; Capacity: 1620g
01-910-208 - Ea./\$2,250.00
Capacity: 3200g
01-910-209 - Ea./\$2,573.00
Capacity: 4200g
01-910-211 - Ea./\$3,145.00
Capacity: 6200g

Mettler Toledo NewClassic MS Precision 0.1g Balances



01-910-213 - Ea./\$1,995.00
Balances, Precision; Mettler Toledo; New Class MS6001S; Readability: 0.1g; Linearity: 0.2g; Capacity: 6200g
01-910-214 - Ea./\$2,415.00
Capacity: 8200g

Mettler Toledo PB-S/FACT Series Balances



01-916-266 - Ea./\$1,376.00
Balance, Electronic Toploading; Mettler Toledo Classic Plus PB-S/FACT; Weighing Range: 0 to 1510g; Readability: 0.1g; Model PB1501-S/FACT; Repeatability: 0.08g; Linearity: \pm 0.1g; Pan Size: 18.1cm
01-920-31 - Ea./\$1,563.00
Capacity 3200g x 0.1g

Mettler Toledo XP Series Balances: Readability 10mg



01-910-362 - Ea./\$4,087.00
Balance, Electronic Toploading; Mettler Toledo; Excellence Plus XP Series; Model XP1202S; Weighing Range: 0 to 1210g; Linearity: \pm 20mg; Pan Size: 17 x 20.5cm
01-910-363 - Ea./\$4,648.00
Weighing Range: 0 to 4100g
01-910-364 - Ea./\$5,042.00
Weighing Range: 0 to 6100g
01-910-366 - Ea./\$5,735.00
Weighing Range: 0 to 8100g
01-910-367 - Ea./\$6,261.00
Weighing Range: 0 to 10100g

Mettler Toledo XP Series Electronic Toploading Balances-Readability 100mg



01-910-358 - Ea./\$3,428.00
Balance, Electronic, Toploading; Mettler Toledo; Excellence Plus XP; Model XP4001S; Weighing Range: 0 to 4100g; Linearity: \pm 100mg; Stabilization Time: 0.8 sec.; Tare Range: 0 to 4100g; Pan Size: 19 x 22.3cm
01-910-359 - Ea./\$3,806.00
Tare Range: 0 to 6100g; Pan Size: 19 x 22.3cm
01-910-360 - Ea./\$4,007.00
Tare Range: 0 to 8100g; Pan Size: 19 x 22.3cm
01-910-361 - Ea./\$4,450.00
Tare Range: 0 to 10100g; Pan Size: 19 x 22.3cm
01-910-365 - Ea./\$4,090.00
Tare Range: 0 to 6100g; Pan Size: 17 x 20.5cm
01-910-368 - Ea./\$5,097.00
Balance, 2000/10100g X .01/.1g

Mettler Toledo XP Series Electronic Toploading Balances-Readability 100mg, Medium Pan



01-910-423 - Ea./\$5,034.00
Balance, Electronic, Toploading; Mettler Toledo XP Series; Model XP6002MDR; Readability: 10mg/100mg; Weighing Range: 0 to 1200g/0 to 6100g; Repeatability: 10mg/60mg; Linearity: 60mg; Stabilization Time: 1.5 sec.; Tare Range: 0-6100g
01-910-425 - Ea./\$4,415.00
Weighing Range: 0 to 8100g
01-910-426 - Ea./\$3,610.00
Weighing Range: 0 to 1800g/0 to 8100g
01-910-424 - Ea./\$6,286.00
Weighing Range: 0-2400g/0-12,100g
01-910-427 - Ea./\$4,844.00
Weighing Range: 0 to 12,100g

Mettler Toledo XP Series Electronic Toploading Balances-Readability 1mg



01-910-369 - Ea./\$4,625.00
Balance, Electronic, Toploading; Mettler Toledo XP Series; Weighing Range: 0 to 210g; Model XP203S; Stabilization Time: 1.5 sec.; Tare Range: 0 to 210g; Pan Size: 12.7 x 12.7cm
01-910-370 - Ea./\$5,501.00
Weighing Range: 0 to 610g
01-910-371 - Ea./\$4,538.00
Weighing Range: 0 to 120g/0 to 610g
01-910-372 - Ea./\$6,408.00
Weighing Range: 0 to 1210g
01-910-421 - Ea./\$6,344.00
Weighing Range: 0 to 500g/0 to 2100g
01-910-422 - Ea./\$7,114.00
Weighing Range: 0 to 1000g/0 to 5100g

Moisture Balances

Ohaus MB35 and MB45 Standard Moisture Analyzers



01-920-115 - Ea./\$3,190.00
Balances, Moisture Analyzer; Ohaus; Model MB35; Weighing range: 0-35g; Moisture range: 0.05-100%; Temp. range: 50-160 \pm deg.C; Timer: 1-120 min.; Halogen heat source w/reflective housing; GLP compliant format; RS 232 port
01-920-62 - Ea./\$3,590.00
Weighing range: 0-45g

Balance Accessories

Ohaus Accessories for MB35 and MB45 Balances

01-921-25 - Pk. of 50/\$31.66
Sample Pans; for Ohaus MB35 and MB45 Balances; Disposable
01-921-27 - Ea./\$50.48
Glass Fiber Pads
01-921-35 - Ea./\$305.39
Temperature Calibration Kit

Chromatography Equipment

Gas Chromatographs

Thermo Scientific FOCUS GC Gas Chromatograph



03-950-100 - Ea./\$10,833.12
Chromatograph, Gas; Thermo Scientific FOCUS GC SSL with FID Detector; For routine QA/QC and high productivity laboratories; Front open oven for easy access and installation of column racks
03-950-101 - Ea./\$11,874.65
Gas Chromatograph, with TCD Detector
03-950-102 - Ea./\$4,678.57
Autosampler; 8-vial positions
03-950-103 - Ea./\$8,354.59
Autosampler; 105-vial positions
03-950-104 - Ea./\$6,460.88
ChromQuest Data System software

03-950-105 - Ea./\$316.51
Start-up kit
03-950-107 - Ea./\$22,278.90
Gas Chromatograph, Automated Bundle
03-950-109 - Ea./\$1,703.36
Installation

Dispensers [Automated Gas]

Neutec Anaerobic Gas System

14-910-321 - Ea./\$6,950.00
Anaerobic Gas System, PetriSphere; Neutec; Programmable; Microprocessor-based controller connected with a diaphragm vacuum pump and a nitrogen gas reservoir; Ultimate pressure <2mbar; Pumping speed 0,8/0,9 m³/h at 50/ 60 Hz; 9.3 in. x 5.7 in. x 13.6 in.

Electrochemistry

Conductivity Meters - Benchtop

Fisher Scientific accumet Excel XL30 Conductivity Meter



13-636-XL30 - Ea./\$2,081.00
Kit, Meter; Fisher Scientific accumet; For XL30 meter only; For use in conductivity measurements; Uses 2 or 4 cell probes; Conductivity range: 0 to 5 x 10⁶µS/cm; For 110/220V 50/60Hz; −10.0 to +110.0°C
13-636-XL30A - Ea./\$1,827.00
Meter only

Thermo Scientific accumet Excel XL30 Conductivity Meter



13636XL30S - Ea./\$2,330.00
Kit, Meter; conductivity; Fisher Scientific accumet; XL30 meter kit w/21 CFR software; For use in conductivity measurements; Uses 2 or 4 cell probes; Conductivity range: 0 to 5 x 10⁶µS/cm; For 110/220V 50/60Hz; −10.0 to +110.0°C

Thermo Scientific Orion 3-Star Plus Conductivity Benchtop Meter



13-642-054 - Ea./\$850.78
Meter; Benchtop; Thermo Scientific; Orion; 3-star plus; Measures conductivity, resistivity, salinity, TDS, temp.; Custom LCD display; 115V 60Hz
13-645-104 - Ea./\$1,219.00
Meter kit with probe
13-645-105 - Ea./\$1,112.00
Meter kit for ultrapure water
13-645-106 - Ea./\$1,484.00
Meter kit for USP water

Thermo Scientific Orion 3-Star Plus Conductivity Benchtop Meter AT5050 Autosampler Package



13-650-164 - Ea./\$9,710.00
Meter, Benchtop; Thermo Scientific; Orion; 3-star plus; With AT5050 autosampler; 48-position rack for 50mL or 45mL beakers; Measures conductivity, resistivity, salinity, TDS, temp.; LCD display; 115V 60Hz

Thermo Scientific Orion 3-Star Plus Conductivity Benchtop Meter AT5150 Autosampler Package



13-650-165 - Ea./\$9,710.00
Meter, Benchtop; Thermo Scientific; Orion; 3-star plus; With AT5150 autosampler; 28-position rack for 150mL beakers; Measures conductivity, resistivity, salinity, TDS, temp.; LCD display; 115V 60Hz

Conductivity Meters - Portable

Thermo Scientific Orion 3-Star Plus Conductivity Portable Meter



13-642-061 - Ea./\$775.59
Meter, Conductivity; Orion 3-Star Plus; Thermo Scientific; Portable; Measures conductivity, resistivity, salinity, TDS, Temp.; Meter only; Includes includes meter, batteries and instructions
13-645-114 - Ea./\$1,016.00
10 x 15mL of 1413μS/cm conductivity/TDS standard
13-645-121 - Ea./\$955.00
10 x 50mL of 1413xS/cm conductivity/TDS standard 011007
13-650-145 - Ea./\$1,076.00
5 x 60mL of 100μS/cm conductivity/TDS standard 011008
13-650-146 - Ea./\$852.00
Meter Kit
13-650-147 - Ea./\$1,076.00
Soft field case

Dissolved Oxygen Meters - Benchtop

Fisher Scientific accumet Excel XL40 Dissolved Oxygen/BOD/OUR/SOUR Meter



13-636-XL40 - Ea./\$2,915.00
Kit, Temperature meter; Fisher Scientific accumet; Dissolved Oxygen/BOD/OUR/SOUR; XL40 meter kit/DO; Custom LCD; Benchtop; Temperature range: −10.0 to +110.0°C; 110/220V
13-636-XL40A - Ea./\$2,328.00
Meter only
13-636-XL40S - Ea./\$2,994.00
Meter kit; with 21 CFR software

Thermo Scientific Orion 3-Star Plus Benchtop Dissolved Oxygen Meter



13-642-053 - Ea./\$1,137.00
Meter, Benchtop; Thermo Scientific; Orion 3-star plus; Dissolved oxygen; DO measurement; LCD display; 115V 60Hz; Range: 0.0 to 90.0mg/L
13-643-023 - Ea./\$2,024.00
Benchtop meter kit; w/Autostir DO/BOD probe
13-645-103 - Ea./\$1,668.00
Benchtop meter kit; DO probe with 3m cable

Dissolved Oxygen Meters - Portable

Thermo Scientific Orion 3-Star Plus Dissolved Oxygen Portable Meter CE, CSA, UL, TUV, FCC Class A limits

13-642-060 - Ea./\$602.55
Meter; Thermo Scientific; Orion 3-Star Plus; Dissolved oxygen; Electrochemistry; Portable; Meter only 1213000; measures DO/temperature; Includes meter, batteries and instruction manual
13-643-030 - Ea./\$1,025.00
Orion 3-Star Plu meter kit 1010121
13-643-046 - Ea./\$1,155.00
Orion 3-Star Plu meter kit 1010138
13-645-113 - Ea./\$1,293.00
Orion 3-Star Plu meter kit 1213001
13-650-142 - Ea./\$1,148.00
Orion 3-Star Plu meter kit 1213101
13-650-143 - Ea./\$1,290.00
Orion 3-Star Plu meter kit 1213501

Thermo Scientific Orion 3-Star RDO Portable Meter



13-302-118 - Ea./\$586.00
Meter; Thermo Scientific; Orion; 3-Star RDO; Portable; Electrochemistry; Meter only 1213300; Custom LCD; IP67-rated meter housing and IP68 rated RDO sensor; Measures DO

13-302-119 - Ea./\$1,205.00
Meter Kit 1213301

13-302-120 - Ea./\$1,339.00
Meter Kit 1213302

Multiparameter Meters - Benchtop

Fisher Scientific accumet Excel XL20 pH/mV/ Temperature/Conductivity/Resistivity Meter



13-636-XL20 - Ea./\$2,286.00
Kit, Meter; Fisher Scientific accumet; Excel XL20; For pH/mV/temperature/conductivity/resistivity measurements; Includes accuCap combination pH electrode (13-620-130), ATC probe (13-602-19), electrode support arm and bracket; 110/220V

13-636-XL20A - Ea./\$2,006.00
Meter w/Electrode support

13-636-XL20AC - Ea./\$2,149.00
Meter with NiST traceable certified

13-636-XL20C - Ea./\$2,429.00
Meter kit w/Electrode support

13-636-XL20S - Ea./\$2,466.00
Meter kit/pH with 21 CFR software

Fisher Scientific accumet Excel XL50 pH/mV/ Temperature/ISE/Conductivity Meter



13-636-XL50 - Ea./\$2,894.00
Kit, Meter; Fisher Scientific accumet; Excel XL50; For pH/mV/temperature/ISE/conductivity measurements; Includes accuCap combination pH electrode (13-620-130), ATC probe (13-602-19), electrode support arm, bracket, manual; 110/220V

13-636-XL50A - Ea./\$2,599.00
Electrochemistry meter

13-636-XL50AC - Ea./\$2,743.00
Meter w/electrode support; NIST traceable certificate

13-636-XL50C - Ea./\$3,038.00
Meter kit w/accuCap combination pH electrode; NIST certified

13-636-XL50S - Ea./\$3,130.00
Meter kit w/accuCap combination pH electrode

Thermo Scientific Orion Dual Star Meter



13-641-291 - Ea./\$1,633.00
Meter, Multiparameter; Thermo Scientific Orion; Dual star pH/ISE/Temperature; w/Probe; Benchtop; Includes: quick start guide, electrode stand, RS-232 cable, SS ATC probe, plus Triode pH/ATC electrode, universal power adapter, 115V 60Hz

13-642-780 - Ea./\$1,354.00
Multiparameter meter

13-642-781 - Ea./\$1,581.00
Meter with probe and plus Triode pH/ATC electrode

13-642-782 - Ea./\$1,627.00
Meter kit

pH Meters - Benchtop

Fisher Scientific accumet Basic AB15 Basic and BioBasic Meters



13-636-AB15 - Ea./\$924.95
Kit, Meter; Fisher Scientific accumet; AB15; pH/mV/°C/F modes; Includes meter, pH Ag/AgCl electrode (13-620-285), ATC probe 13-620-19, accumet liquid-filled, electrode support arm and bracket, operation manual; 115V 60Hz

13-636-AB15A - Ea./\$735.35
Meter only

13-636-AB15B - Ea./\$955.05
BioBasic meter kit

13-636-AB15BC - Ea./\$1,100.00
BioBasic meter kit w/NIST certified

13-636-AB15C - Ea./\$1,080.00
Meter kit with NIST-traceable certificate

13-636-AB15E - Ea./\$825.64
University meter kit

Fisher Scientific accumet Excel XL15 pH/mV/ Temperature Meter



13-636-XL15 - Ea./\$1,708.00
Kit, Meter; Fisher Scientific accumet; Excel XL15; For pH/mV/temp. measurements; Includes accuCap combination pH electrode; ATC probe; Electrode support, manual; 110/220V

13-636-XL15A - Ea./\$1,538.00
Excel XL15A meter; w/Electrode support

13-636-XL15AC - Ea./\$1,677.00
Excel XL15AC meter only

13-636-XL15C - Ea./\$1,850.00
XL15A Meter kit

13-636-XL15S - Ea./\$1,850.00
XL15 meter kit

Thermo Scientific Orion 2-Star Benchtop pH Meter



13-642-604 - Ea./\$740.00
Kit, pH meter; Thermo Scientific Orion 2-Star; pH/mV/Temp. meter kit 1111001; pH 0 to 14; ±1999.9mV; −5.0 to +105.0°C; w/ Triode pH/ATC electrode, electrode stand, 1 pt. each of pH 4.01/7.00/10.01 buffers, power supply, instruction manual

13-644-910 - Ea./\$459.28
pH meter 111000

13-644-911 - Ea./\$578.00
Meter/Electrode Package 1111101

13-644-912 - Ea./\$632.00
Meter/Electrode/Stand Package 1111201

13-644-913 - Ea./\$654.00
Meter/Electrode Package 1111102

13-644-914 - Ea./\$707.00
Meter/Electrode/Stand Package 1111202

13-644-915 - Ea./\$764.26
Meter/Electrode Package 1111103

13-644-916 - Ea./\$808.00
Meter/Electrode/Stand Package 1111203

13-644-917 - Ea./\$568.00
Meter Package 1111104

13-644-918 - Ea./\$621.00
Meter/Electrode/Stand Package 1111204

13-644-951 - Ea./\$559.29
Meter/Electrode Package 1111105

13-644-953 - Ea./\$530.00
Meter/Electrode Package 1111106

13-644-954 - Ea./\$582.00
Meter/Electrode/Stand Package 1111206

13-644-955 - Ea./\$570.00
Meter/Electrode Package 1111107

13-644-956 - Ea./\$623.00
Meter/Electrode/Stand Package 1111207

13-644-957 - Ea./\$651.99
Meter/Electrode Package 1111108

13-644-958 - Ea./\$697.00
Meter/Electrode/Stand Package 1111208

Thermo Scientific Orion 3-Star Plus pH Benchtop Meter



- 13-642-052** - Ea./\$614.91
pH meter; Thermo Scientific Orion 3-Star Plus; Benchtop; With universal power supply and instructions
- 13-644-920** - Ea./\$856.00
pH meter kit with Triode pH/ATC electrode 9157BNMD electrode stand, electrode storage solution, universal power supply and instructions
- 13-644-921** - Ea./\$910.52
pH meter kit w/SureFlow pH electrode, glass ATC Probe
- 13-644-922** - Ea./\$952.00
pH meter kit with SureFlow pH electrode
- 13-644-924** - Ea./\$923.00
pH meter kit with AquaPro epoxy pH electrode
- 13-644-925** - Ea./\$860.05
pH meter kit with Triode pH/ATC electrode 9157BNMD Benchtop; With Triode pH/ATC electrode 9157BNMD, universal power supply and instructions
- 13-644-927** - Ea./\$873.00
pH meter kit w/epoxy pH electrode, SS ATC probe
- 13-645-100** - Ea./\$862.00
pH meter kit w/Triode pH/ATC electrode, electrode stand, 1 pt. each of pH 4.01/7.00/10.01 buffers
- 13-645-102** - Ea./\$966.00
pH meter kit with ROSS Ultra pH electrode, buffers
- 13-650-125** - Ea./\$883.00
pH meter kit with SureFlow pH electrode, electrode stand, 1 pt. each of pH 4.01/7.00/10.01 buffers
- 13-650-126** - Ea./\$978.00
pH meter kit w/ROSS Ultra pH electrode, 5 x 60mL pH/ISA Solution
- 13-650-128** - Ea./\$727.18
pH meter kit with SureFlow epoxy pH electrode
- 13-650-129** - Ea./\$829.00
pH meter kit with Triode pH/ATC electrode 9107BNMD Benchtop; With Triode pH/ATC electrode 9107BNMD, electrode stand, universal power supply and instructions

pH Meters - Portable

Fisher Scientific accumet AP110 and AP115 Portable pH Meters



- 13-636-AP110** - Ea./\$723.31
Kit, pH meter; Fisher Scientific accumet AP110; pH/mV/deg;C modes; Large LCD; pH range: -2 to +20; 0 to +2000.0mV; Temp. range: -5 to +100deg;C; ATC, BNC; ABS plastic with sealed keypad
- 13-636-AP110A** - Ea./\$598.91
accumet AP110 Meter Only
- 13-636-AP115** - Ea./\$829.65
accumet AP115 Meter Kit
- 13-636-AP115A** - Ea./\$713.28
accumet AP115 Meter Only

Titrators

Mettler Toledo C20 and V20 Series Karl Fischer Titrators



- 01-911-135** - Ea./\$7,440.00
Titrator, Volumetric; Mettler Toledo; V20; Range: 100ppm to 10% water; Simple and fast; Safe handling of chemicals
- 01-911-136** - Ea./\$7,440.00
Coulometric; 1ppm to 5%; Without diaphragm
- 01-911-137** - Ea./\$7,440.00
Coulometric; 1ppm to 5%; With diaphragm

Electrodes

pH ORP Titration - Combination

Fisher Scientific accumet Mercury-Free pH/ATC Combination Electrodes



- 13-620-631** - Ea./\$197.69
Electrode, pH/ATC Double-Junction Combination; Fisher Scientific; accumet Ag/AgCl Reference; Liquid-Filled; 0 to 14pH, 0 to 100deg;C ranges; Epoxy body; 105mL; 12mm dia.; BNC and Mini-phone ATC connectors
- 13-620-AP61** - Ea./\$197.69
BNC and ATC connectors

Fluorometers and Fluorescence Polarization Systems

Thermo Scientific NanoDrop 3300 Fluorospectrometer



- ND3300** - Ea./\$11,500.00
Fluorospectrometer; Thermo Scientific NanoDrop 3300; Analyze 1microL samples with high accuracy and reproducibility; Broad excitation range (UV, Blue and White LED)

Thermo Scientific Quantech Life Science UV Filter Fluorometers



- 11-164-51** - Ea./\$9,520.52
Fluorometer; Digital; Thermo Scientific Quantech; Wide Band; Excitation: 254-750nm; Emission: 185-870nm; Lamp: Quartz Halogen Mercury Line; Multiple samples; Compact; Store up to 9 multpt std curves; Includes: 1 excitation filter, 1 emission filter; 120V
- 11-164-52** - Ea./\$7,105.00
Base 120V 50/60Hz
- 11-675-906** - Ea./\$10,542.99
Life Science/UV 120V 50/60Hz

Microplate Readers

Fisher Scientific Multiskan FC Microplate Reader



- 14-245-300** - Ea./\$6,622.00
Reader, Microplate; Fisher Scientific; Multiskan FC Photometer; Inc. filters: 405, 450, 620nm; Reads 96-well plates in 6 sec.; w/Linear Shaking; Auto-calibration; 12-5/8 L x 16-1/2 W x 5-1/2 in. H; 110V 50/60Hz
- 14-245-301** - Ea./\$9,399.00
Reader with Incubation up to 50deg;C

BioTek Photometric Multi Detection Readers

11-120-521 - Ea./\$30,910.00

Microplate reader; BioTek Instruments Synergy 2 Multi-Mode Microplate Reader; Model SLFD with temperature control, shaking, Gen5, Luminescence, Fluorescence intensity top and bottom, and Dual reagent dispenser; 1 ea.

BioTek PowerWave XS Scanning Microplate Spectrophotometer



BTMQX200R - Ea./\$16,544.40

Spectrophotometer, Microplate; Scanning; Bio-Tek PowerWave XS with Incubation; 200-999nm; 6- to 384-well plate reading with programmable shaking; temperature control ambient +4 ° C to 50 ° C; includes PC software

BioTek Synergy 2 Multi-Detection Microplate Reader



11-120-514 - Ea./\$42,760.00

Microplate reader, Multi-Detection; BioTek Synergy 2; With all detection modes; Without dispenser; With Gen5 Reader Control and Data Analysis Software

11-120-515 - Ea./\$49,840.00

With all detection modes; With dispenser

11-120-516 - Ea./\$32,670.00

With luminescence, fluorescence, absorbance; Without dispenser

11-120-517 - Ea./\$40,060.00

With luminescence, fluorescence, absorbance; With dispenser

11-120-518 - Ea./\$15,500.00

With luminescence; Without dispenser

11-120-519 - Ea./\$21,330.00

With luminescence; With dispenser

11-120-520 - Ea./\$24,450.00

With fluorescence and luminescence; Without dispenser

11-120-522 - Ea./\$34,750.00

With fluorescence intensity and polarization, luminescence, UV-visible absorbance; Without dispenser

11-120-523 - Ea./\$42,340.00

With fluorescence intensity and polarization, luminescence, UV-visible absorbance; With dispenser

BioTek Synergy Mx Monochromator-Based MultiMode Reader



BTSMA - Ea./\$22,440.00

Microplate Reader, Multi-Detection; Monochromator-based; Synergy Mx; Modules: Microplate-based UV-Visible absorbance; With Gen5 Software; Incubates to 65degC

BTSMAC - Ea./\$25,500.00

Modules: Microplate-based UV-Visible absorbance, Cuvette-based absorbance measurements

BTSMACD - Ea./\$32,130.00

Modules: Monochromator-based; Synergy Mx; Microplate-based UV-Visible absorbance, Cuvette-based absorbance measurements, Dual Reagent Dispenser

BTSMACL - Ea./\$30,600.00

Modules: Microplate-based UV-Visible absorbance, Cuvette-based absorbance measurements, Luminescence

BTSMACLD - Ea./\$37,230.00

Modules: Microplate-based UV-Visible absorbance, Cuvette-based absorbance measurements, Luminescence, Dual Reagent Dispenser

BTSMAD - Ea./\$29,070.00

Modules: Microplate-based UV-Visible absorbance, Dual Reagent Dispenser

BTSMAL - Ea./\$27,540.00

Modules: Microplate-based UV-Visible absorbance, Luminescence

BTSMALD - Ea./\$34,170.00

Modules: Microplate-based UV-Visible absorbance, Luminescence, Dual Reagent Dispenser

BTSMAT - Ea./\$33,150.00

Modules: Microplate-based UV-Visible absorbance, Top monochromator-based fluorescence intensity

BTSMATB - Ea./\$38,250.00

Modules: Microplate-based UV-Visible absorbance, Top, bottom monochromator-based fluorescence intensity

BTSMATBC - Ea./\$41,310.00

Modules: Microplate- and cuvette-based UV-Visible absorbance, Top and bottom monochromator-based fluorescence intensity

BTSMATBCD - Ea./\$47,940.00

Modules: Microplate- and cuvette-based UV-Visible absorbance, Cuvette-based absorbance measurements, Dual Reagent Dispenser

BTSMATBCL - Ea./\$46,410.00

Modules: Microplate- and cuvet-based UV-Visible absorbance, Top and bottom monochromator-based fluorescence intensity, Luminescence

BTSMATBCLD - Ea./\$53,040.00

Modules: Microplate- and Cuvette-based UV-Visible absorbance, Top and bottom monochromator-based, Luminescence, Dual Reagent Dispenser

BTSMATBD - Ea./\$44,880.00

Modules: Microplate- based UV-Visible absorbance, Top and bottom monochromator-based fluorescence intensity, Dual Reagent Dispense

BTSMATBL - Ea./\$43,350.00

Modules: Microplate-based UV-Visible absorbance, Top monochromator-based fluorescence intensity, Luminescence, Dual Reagent Dispense

BTSMATBLD - Ea./\$49,980.00

Modules: Microplate-based UV-Visible absorbance, Top and bottom monochromator-based, Luminescence, Dual Reagent Dispenser

BTSMATC - Ea./\$36,210.00

Modules: Microplate- and cuvet-based UV-Visible absorbance, Top monochromator-based fluorescence intensity

BTSMATCD - Ea./\$42,840.00

Modules: Microplate-based UV-Vis absorbance, Cuvette-based absorbance, Top monochromator-based fluorescence, Cuvette-based absorbance, Dual Reagent Dispenser

BTSMATCL - Ea./\$41,310.00

Modules: Microplate- and cuvet-based UV-Visible absorbance, Top monochromator-based fluorescence intensity, Luminescence

BTSMATL - Ea./\$38,250.00

Modules: Microplate-based UV-Visible absorbance, Top monochromator-based fluorescence intensity, Luminescence

BTSMATLD - Ea./\$44,880.00

Modules: Microplate-based UV-Visible absorbance, Top and bottom monochromator-based fluorescence intensity, Luminescence, Dual Reagent Dispense

BTSML - Ea./\$16,320.00

Modules: Monochromator-based; Synergy Mx; Modules: Luminescence; With Gen5 Software

BTSMT - Ea./\$27,540.00

Modules: Top monochromator-based fluorescence intensity

BTSMTBD - Ea./\$39,270.00

Modules: Luminescence

Spectrometers

Thermo Scientific iCE 3300 AA Spectrometer



14-200-200 - Ea./\$16,990.00

Spectrometer; Thermo Scientific; iCE 3300 AA, unit only

14-200-202 - Ea./\$19,016.00

Basic Bundle (with Lamp Bundle)

14-200-203 - Ea./\$24,151.00

Automated Flame Bundle (Autosampler)

14-200-204 - Ea./\$35,559.00

with Graphite Furnace and Autosampler Module

Thermo Scientific IR100 FT-IR Spectrometer



14-200-12 - Ea./\$13,378.99
Spectrometer; Thermo Scientific; Spectronic; IR100 FT-IR; Compact; Easy to use; Quadrascan interferometer; Cornercube optics; Spectral Range 7800 to 350cm &subscript_1; Spectral Resolution 128 to 4cm &subscript_1; 110V 60Hz; w/Encompass software

Spectrophotometers

Thermo Scientific AquaMate Plus Spectrophotometers



14-385-600 - Ea./\$5,100.00
Spectrophotometer, Visible; Thermo Scientific; AquaMate Vis; 100-240V 50/60Hz
14-385-601 - Ea./\$5,600.00
UV-Visible

Thermo Scientific BioMate 3S UV-Vis Bio Analyzer



14-386-503 - Ea./\$5,350.00
Spectrophotometer; Thermo Scientific BioMate 3S; Six-Position Cell Holder Model; Spectral Bandwidth: 1.8nm; long-life xenon lamp; 16 L x 13 W x 9 in. H; 19 lb.; store up to 40 test methods; 100/240V US line cord
14-386-504 - Ea./\$5,765.00
With Printer
14-386-521 - Ea./\$8,800.00
With Nanocell

Thermo Scientific BioMate 6 Spectrophotometer



14-385-602 - Ea./\$8,200.00
Spectrophotometer; Thermo Scientific; BioMate 6; 100/240V 50/60Hz; Lamp: Deuterium (1000 hrs.), Tungsten (2000 hrs.); 2nm Bandwidth; Optics: Double-beam, Seya-Namioka Monochromator; Scan Speed 1 to 3800nm/min; Detectors: Dual Silicone Photodiodes

Thermo Scientific Evolution 60S UV-VIS Spectrophotometers

14-386-510 - Ea./\$6,541.00
Spectrophotometer, UV-Vis; Thermo Scientific; Evolution 60S
14-386-511 - Ea./\$6,953.00
60S w/Printer
14-386-512 - Ea./\$5,923.00
60S PC Control

Thermo Scientific Evolution 160 UV-Vis Spectrophotometer



14-385-603 - Ea./\$7,950.00
Spectrophotometer, UV-Vis; Thermo Scientific; Evolution 160; 100/240V

Thermo Scientific Evolution 300 UV-VIS Spectrophotometer



14-386-404 - Ea./\$14,127.00
Spectrophotometer, UV-Vis; Thermo Scientific; Evolution 300 LC; Stand-alone; Local control; W/built-in LCD screen; Complete instrument control
14-386-405 - Ea./\$14,433.00
300 LC w/Internal Graphic Printer
14-386-406 - Ea./\$12,550.00
300 PC w/VisionSecurity Software
14-386-407 - Ea./\$11,750.00
300 PC w/VisionPro Software

14-386-408 - Ea./\$10,850.00
300 PC, No Software

Thermo Scientific Evolution 600 UV-Vis Spectrophotometer



14-386-400 - Ea./\$14,790.00
Spectrophotometer, UV-Vis; Thermo Scientific; Evolution 600 LC; Stand-alone; Local control; w/built-in LCD screen; Complete instrument control, 100/240V 50/60Hz
14-386-402 - Ea./\$15,950.00
Evolution 600 PC with VISION Security Software
14-386-403 - Ea./\$13,450.00
Evolution 600 PC with VISIONPro Software

Thermo Scientific Genesys 10S UV-Vis Spectrophotometers

14-386-515 - Ea./\$4,850.00
Spectrophotometer, Thermo Scientific Genesys 10S UV-Vis
14-386-516 - Ea./\$5,265.00
With Printer

Thermo Scientific Genesys 10S Vis Spectrophotometers

14-386-519 - Ea./\$3,300.00
Spectrophotometer, Thermo Scientific Genesys 10S Vis
14-386-520 - Ea./\$3,750.00
With Printer

Thermo Scientific NanoDrop 2000/2000C Spectrophotometers



ND2000 - Ea./\$9,150.00
Spectrophotometer, UV-Vis; Thermo Scientific; NanoDrop 2000; Large dynamic range: 2 to 15000ng/microL (dsDNA)
ND2000C - Ea./\$10,650.00
NanoDrop 2000C; equipped to make cuvette based measurements

Thermo Scientific NanoDrop 8000 Spectrophotometer



ND8000 - Ea./\$24,675.00
Spectrophotometer, UV-Vis; Thermo Scientific; NanoDrop 8000; Simultaneously analyze eight 1microL samples with high accuracy and reproducibility; Software designed for life sciences applications

BioTek Epoch Microplate Spectrophotometer



11-120-570 - Ea./\$8,950.00
Spectrophotometer, Microplate; BioTek; Epoch; Includes: Gen5, Microplate Data Analysis Software; Compatible with 6- to 384-well microplates; Wave length: 200nm to 999nm range, ±2 nm accuracy, ±0.2nm; Bandpass: 5nm; Absorbance range: 0 to 4.0

BioTek Take3 Multi-Volume Plate Accessory

11-120-571 - Ea./\$2,600.00
Plate, Multi-volume; BioTek; Take3; Accessory for spectrophotometer; Sample volume: 2μL; For nucleic acid and protein quantification; Comes with Gen5 interface; Path length: 0.5mm (calibrated); Detection mode: absorbance

Spectrophotometer and Colorimeter Accessories

Attachments and Interface Boards

Thermo Scientific Spectronic Sipper System

14-385-481 - Ea./\$1,709.52

Sipper System; Thermo Scientific Spectronic; For 190-1110nm

Cell Holders

Thermo Scientific Evolution and Genesys UV-Vis Spectrophotometers Peltier Thermostatted Single-Cell Holder



14-386-461 - Ea./\$1,950.00

Holder, Cell; Accessories; Thermo Scientific Evolution 60 and GENESYS Spectrophotometer; Peltier Thermostatted Single Cell Holder; Temperature range from 20 to 60°C

Thermo Scientific Genesys 10 UV-Vis Spectrophotometers Cylindrical Longpath Cell Holder

14-385-400 - Ea./\$125.59

Holder, Cell; Accessories; Thermo Scientific Genesys 10 UV-Vis; Longpath; Cylindrical; For use with: Genesys 10 UV-Vis w/single-cell cuvet holder

Thermo Scientific Genesys 10 UV-Vis Spectrophotometers Narrow Rect Longpath Cell Holder

14-385-273 - Ea./\$137.69

Holder, Cell; Accessories; Thermo Scientific Genesys 10 UV-Vis; Longpath; Rectangular Narrow; For use with: Genesys 10 UV-Vis

Thermo Scientific Spectronic Cell Holder

14-385-478 - Ea./\$122.10

Holder, Cell; Accessories; Thermo Scientific Spectronic; Longpath; Cylindrical

14-385-479 - Ea./\$121.99

Rectangular

Software and Program Packs

Thermo Scientific VISIONlite ColorCalc Basic and Advanced Color Calculation Software

14-380-604 - Ea./\$1,626.90

Software; Thermo Scientific VISIONlite; ColorCalc; Advanced version; For color determination and comparison; Features standard color calculations and advanced parameters for pharmaceutical industry

14-380-605 - Ea./\$813.17

Basic version

Thermo Scientific VISIONlite MaterialsCalc Software

14-380-606 - Ea./\$1,626.90

Software; Thermo Scientific VISIONlite; MaterialsCalc; For determining reflectance and transmission properties of materials, solids, optics, and liquids

Thermo Scientific VISIONlite SE UV-Visible Spectrophotometer Software

14-386-455 - Ea./\$1,830.90

Software; Thermo Scientific VISIONlite; SE UV-Visible; For flexible instrument control and data processing; Features scan, fixed wavelength analysis, quantification, and kinetics

Thermo Scientific VISIONlite Spectrophotometer Software

14-200-42 - Ea./\$533.66

Software; Thermo Scientific VISIONlite; For use with Spectronic UV-Vis spectrophotometers, Includes fixed wavelength, quantification (standard curve), scan and rate (kinetics), Operates under Windows 95/98, NT, 2000, XP, Requires Cat. No. 14-385-332 inter

Thermal Cyclers

Eppendorf Mastercycler pro PCR System



E950030010 - Ea./\$7,712.00

Thermal Cycler; Mastercycler pro; 96-well, Aluminum block; Temp. Range: 4° to 99°C; Temp. Accuracy: ±0.2°C; Heating Rate: approx. 4°C/sec.; Cooling Rate: approx. 3°C/sec.

E950030020 - Ea./\$8,568.00

Mastercycler pro S

E950030030 - Ea./\$8,247.00

Mastercycler pro 384

E950040015 - Ea./\$8,620.00

Mastercycler pro w/Control Panel

E950040025 - Ea./\$9,384.00

Mastercycler pro S w/Control Panel

E950040035 - Ea./\$9,104.00

Mastercycler pro 384 w/Control Panel

E950030050 - Ea./\$2,132.00

Control Panel

Furniture

Chairs and Stools

Thermo Scientific Forma PSI Laboratory Chair

15-474-222 - Ea./\$549.13

Chair, Laboratory; Thermo Scientific Forma; PSI; with Arms

15-474-223 - Ea./\$505.38

without Arms

Cat. No.	Page	Cat. No.	Page	Cat. No.	Page	Cat. No.	Page	Cat. No.	Page
00554	3	01-911-351	23	02-500-120	11	11-200-49H	9	12-560-49	12
01-910-001	23	01-911-352	23	02-500-121	11	11-200-49S	22	12-563-309	13
01-910-014	23	01-911-353	23	02-500-122	11	11-200-49SH	9	12-563-311	12
01-910-015	23	01-911-354	23	02-500-127	11	11-300-49HP	9	12-563-312	12
01-910-150	23	01-911-355	23	02-500-129	11	11-300-49S	22	12-563-313	12
01-910-152	23	01-911-520	24	02-500-134	11	11-300-49SHP	9	12-563-314	12
01-910-154	23	01-911-521	24	02-500-137	11	11-320-12Q	10	12-563-320	12
01-910-156	24	01-911-524	24	02-500-138	11	11-320-16Q	10	12-563-321	12
01-910-160	24	01-911-525	24	02-500-139	11	11-320-17Q	10	12-563-322	12
01-910-162	24	01-911-526	24	02-964-1	22	11-400-005Q	10	12-563-323	12
01-910-200	23	01-911-527	24	02-964-10	22	11-400-011Q	10	12-564-050	12
01-910-201	23	01-911-528	24	02-964-19	22	11-400-014Q	10	12-564-051	12
01-910-202	23	01-911-529	24	02-964-3	22	11-400-023Q	10	12-564-052	12
01-910-207	25	01-913-132	22	02-964-5	22	11-400-026Q	10	12-564-053	13
01-910-208	25	01-913-145	23	02-964-7	22	11-400-49HP	9	12-564-054	12
01-910-209	25	01-913-146	23	02-964-9	22	11-400-49SHP	9	12-564-055	13
01-910-211	25	01-913-147	23	03-421-200	8	11-475-132	14	12-564-132	13
01-910-213	25	01-913-148	24	03-421-201	8	11-475-134	14	12-564-159	13
01-910-214	25	01-913-149	24	03-421-202	8	11-475-136	14	12-564-160	13
01-910-215	24	01-913-150	24	03-421-203	8	11-475-138	14	12-564-161	13
01-910-216	24	01-913-151	24	03-421-204	8	11-475-139	14	12-566-700	12
01-910-217	24	01-913-152	24	03-421-205	8	11-475-140	14	12-592-200	1
01-910-218	24	01-913-153	24	03-421-207	8	11-475-142	14	12-592-201	1
01-910-219	25	01-913-547	23	03-950-100	25	11-475-144	14	12-814-5Q	21
01-910-220	25	01-913-600	24	03-950-101	25	11-475-146	14	12-815-18Q	21
01-910-224	24	01-913-601	24	03-950-102	25	11-475-148	14	12-815-20	21
01-910-225	24	01-913-602	24	03-950-103	25	11-475-150	14	12-815-20Q	21
01-910-226	24	01-913-81	22	03-950-104	25	11-475-152	14	12-815-3Q	21
01-910-227	24	01-913-82	22	03-950-105	26	11-475-154	14	12-815-5Q	21
01-910-228	24	01-914-03	22	03-950-107	26	11-475-30Q	10	12-815-6Q	21
01-910-229	24	01-915-11	22	03-950-109	26	11-481Q	1	13-100-675	3
01-910-230	24	01-915-12	22	05-400-016	4	11-496-102	10	13-100-676	3
01-910-231	24	01-915-13	22	05-400-017	4	11-496-109Q	10	13-246-506GAQ	14
01-910-233	24	01-915-15	23	05-400-018	4	11-496-55Q	9	13-246-516GAQ	14
01-910-320	23	01-915-19	23	05-403-94	4	11-496-94	10	13-247-625G	14
01-910-321	23	01-915-20	23	05-413-101	3	11-497-6A	10	13-247-637G	14
01-910-322	23	01-915-21	23	05-413-103	3	11-497A	10	13-247-650G	14
01-910-323	23	01-915-22	23	05-413-104	3	11-500-150	10	13-247-725F	14
01-910-324	23	01-915-23	23	05-413-200	3	11-500-151	10	13-247-725G	14
01-910-325	23	01-915-24	22	05-423-117	3	11-500-152	10	13-247-737F	14
01-910-358	25	01-915-25	22	07-250-140	10	11-500-153	10	13-247-737G	14
01-910-359	25	01-915-26	22	07-250-141	10	11-500-154	10	13-247-750F	14
01-910-360	25	01-915-32	24	09-047-113Q	21	11-500-155	10	13-247-750G	14
01-910-361	25	01-915-33	24	09-050-287Q	10	11-500-4F	21	13-248A	14
01-910-362	25	01-915-34	24	09-518-157B	6	11-502-100Q	10	13-255-25	11
01-910-363	25	01-915-35	24	09-518-157C	6	11-506	9	13-255-26	11
01-910-364	25	01-915-36	24	09-528-100	6	11-650-900	14	13-255-27	11
01-910-365	25	01-916-250	23	09-528-100A	6	11-650-901	14	13-255-28	11
01-910-366	25	01-916-251	23	09-528-101	6	11-650-902	14	13-261-224	9
01-910-367	25	01-916-266	25	09-528-102	6	11-650-903	14	13-261-225	9
01-910-368	25	01-920-115	25	09-528-110	5	11-650-904	14	13-261-226	9
01-910-369	25	01-920-31	25	09-528-110B	5	11-650-905	14	13-261-227	9
01-910-370	25	01-920-62	25	09-528-118	5	11-650-906	14	13-261-228	9
01-910-371	25	01-921-25	25	09-528-126	5	11-671-50Q	21	13-261-229	9
01-910-372	25	01-921-27	25	09-528-128	5	11-671-52Q	21	13-261-54	14
01-910-406	24	01-921-35	25	09-528-165	5	11-675-906	28	13-262-280A	14
01-910-407	24	02-215-360	21	09-528-178	5	11-675-909Q	10	13-262-285A	14
01-910-408	24	02-215-365	21	09518157A	6	11-675-912Q	10	13-262-50	15
01-910-409	24	02-215-370	21	11-100-100H	9	11-675-915Q	10	13-262-52	15
01-910-410	24	02-215-375	21	11-100-100S	22	11-675-917Q	10	13-302-118	27
01-910-411	24	02-215-500	2	11-100-100SH	9	11-675-926Q	10	13-302-119	27
01-910-412	24	02-215-501	2	11-100-16H	9	11-675-941	1	13-302-120	27
01-910-413	24	02-215-502	2	11-100-16S	22	12-070-280	13	13-620-631	28
01-910-414	24	02-215-503	2	11-100-16SH	9	12-070-281	13	13-620-AP61	28
01-910-415	24	02-500-100	11	11-100-49H	9	12-070-440	12	13-636-AB15	27
01-910-416	24	02-500-101	11	11-100-49S	22	12-070-441	12	13-636-AB15A	27
01-910-417	24	02-500-102	11	11-100-49SH	9	12-070-442	13	13-636-AB15B	27
01-910-421	25	02-500-104	11	11-120-514	29	12-071-300	13	13-636-AB15BC	27
01-910-422	25	02-500-105	11	11-120-515	29	12-071-301	13	13-636-AB15C	27
01-910-423	25	02-500-107	11	11-120-516	29	12-071-402	13	13-636-AB15E	27
01-910-424	25	02-500-108	11	11-120-517	29	12-071-403	13	13-636-AP110	28
01-910-425	25	02-500-109	11	11-120-518	29	12-071-404	13	13-636-AP110A	28
01-910-426	25	02-500-110	11	11-120-519	29	12-071-405	13	13-636-AP115	28
01-910-427	25	02-500-111	12	11-120-520	29	12-071-406	13	13-636-AP115A	28
01-910-650	23	02-500-112	11	11-120-521	29	12-071-407	13	13-636-XL15	27
01-910-651	23	02-500-113	12	11-120-522	29	12-071-408	13	13-636-XL15A	27
01-910-670	23	02-500-114	11	11-120-523	29	12-071-409	13	13-636-XL15AC	27
01-910-671	23	02-500-115	11	11-120-570	30	12-071-410	13	13-636-XL15C	27
01-911-135	28	02-500-116	11	11-120-571	30	12-071-411	13	13-636-XL15S	27
01-911-136	28	02-500-117	12	11-164-51	28	12-072-400	13	13-636-XL20AC	27
01-911-137	28	02-500-118	11	11-164-52	28	12-072-401	13	13-636-XL20C	27
01-911-350	23	02-500-119	11	11-178-191	3	12-560-48	12	13-636-XL20S	27

Cat. No.	Page	Cat. No.	Page	Cat. No.	Page	Cat. No.	Page	Cat. No.	Page
13-636-XL30	26	13-986-120A	19	14-200-12	30	14-386-343	16	14-910-361	4
13-636-XL30A	26	13-986-120R	19	14-200-200	29	14-386-344	16	15-338-420	2
13-636-XL40	26	13-986-120RA	19	14-200-202	29	14-386-345	16	15-453-300	9
13-636-XL40A	26	13-986-122	19	14-200-203	29	14-386-346	16	15-453-301	9
13-636-XL40S	26	13-986-122A	19	14-200-204	29	14-386-347	16	15-460-10Q	1
13-636-XL50	27	13-986-122R	19	14-200-42	31	14-386-348	16	15-460-15Q	1
13-636-XL50A	27	13-986-122RA	19	14-245-300	28	14-386-349	15	15-460-20Q	1
13-636-XL50AC	27	13-986-124	19	14-245-301	28	14-386-350	15	15-460-28Q	1
13-636-XL50C	27	13-986-124A	19	14-261-02	2	14-386-351	15	15-460-2Q	1
13-636-XL50S	27	13-986-124R	19	14-261-02P	2	14-386-352	15	15-460-2SQ	1
13-636XL20	27	13-986-124RA	19	14-261-02S	2	14-386-353	15	15-460-5Q	1
13-636XL20A	27	13-986-126	19	14-261-04	2	14-386-354	15	15-460-S10Q	1
13-641-291	27	13-986-126A	19	14-261-04P	2	14-386-355	15	15-460-S15Q	1
13-642-052	28	13-986-126R	19	14-261-04S	2	14-386-356	15	15-460-S20Q	1
13-642-053	26	13-986-126RA	19	14-261-06	2	14-386-357	15	15-460-S28Q	1
13-642-054	26	13-986-127G	17	14-261-06P	2	14-386-358	15	15-460-S2Q	1
13-642-060	26	13-986-127GA	17	14-271-8Q	21	14-386-359	15	15-460-S2SQ	1
13-642-061	26	13-986-128S	19	14-271-9	21	14-386-360	15	15-460-S5Q	1
13-642-604	27	13-986-128SA	19	14-280-45	1	14-386-361	15	15-462-10Q	1
13-642-780	27	13-986-128SR	19	14-285-729	20	14-386-362	15	15-462-15Q	1
13-642-781	27	13-986-130	19	14-285-730	20	14-386-363	15	15-462-20Q	1
13-642-782	27	13-986-130A	19	14-285-731	20	14-386-364	15	15-462-28Q	1
13-643-023	26	13-986-130RA	19	14-285-732	20	14-386-365	15	15-462-2Q	1
13-643-030	26	13-986-132	19	14-285-733	20	14-386-366	15	15-462-2SQ	1
13-643-046	26	13-986-132A	19	14-285-734	20	14-386-367	15	15-462-5Q	1
13-644-910	27	13-986-132RA	19	14-285-735	20	14-386-368	15	15-462-S10Q	1
13-644-911	27	13-986-134	17	14-285-736	20	14-386-400	30	15-462-S15Q	1
13-644-912	27	13-986-134A	17	14-380-604	31	14-386-402	30	15-462-S20Q	1
13-644-913	27	13-986-134RA	17	14-380-605	31	14-386-403	30	15-462-S28Q	1
13-644-914	27	13-986-136S	17	14-380-606	31	14-386-404	30	15-462-S2Q	1
13-644-915	27	13-986-136SA	17	14-385-273	31	14-386-405	30	15-462-S2SQ	1
13-644-916	27	13-986-136SR	17	14-385-400	31	14-386-406	30	15-462-S5Q	1
13-644-917	27	13-986-136SRA	17	14-385-478	31	14-386-407	30	15-474-202	8
13-644-918	27	13-986-138	17	14-385-479	31	14-386-408	30	15-474-203	8
13-644-920	28	13-986-138A	17	14-385-481	31	14-386-455	31	15-474-204	9
13-644-921	28	13-986-138G	17	14-385-600	30	14-386-461	31	15-474-205	9
13-644-922	28	13-986-138GA	17	14-385-601	30	14-386-503	30	15-474-206	9
13-644-924	28	13-986-138RA	17	14-385-602	30	14-386-504	30	15-474-207	9
13-644-925	28	13-986-140	17	14-385-603	30	14-386-510	30	15-474-208	8
13-644-927	28	13-986-140A	17	14-386-300	16	14-386-511	30	15-474-209	9
13-644-951	27	13-986-140RA	17	14-386-301	16	14-386-512	30	15-474-210	9
13-644-953	27	13-986-145G	17	14-386-302	16	14-386-515	30	15-474-211	9
13-644-954	27	13-986-145GA	17	14-386-303	16	14-386-516	30	15-474-212	9
13-644-955	27	13-986-149G	17	14-386-304	16	14-386-519	30	15-474-213	9
13-644-956	27	13-986-149GA	17	14-386-305	16	14-386-520	30	15-474-216	9
13-644-957	27	13-986-150	17	14-386-306	16	14-386-521	30	15-474-217	9
13-644-958	27	13-986-151B	18	14-386-307	16	14-487-65	16	15-474-219	9
13-645-100	28	13-986-152	18	14-386-308	16	14-487-66	16	15-474-221	9
13-645-102	28	13-986-153	18	14-386-309	16	14-487-67	16	15-474-222	31
13-645-103	26	13-986-172G	17	14-386-310	16	14-487-68	16	15-474-223	31
13-645-104	26	13-986-172GA	17	14-386-311	16	14-487-69	16	15-474-224	9
13-645-105	26	13-986-227G	18	14-386-312	17	14-487-70	16	15-474-322	9
13-645-106	26	13-986-227GA	18	14-386-313	17	14-487-71	16	15-474-323	9
13-645-113	26	13-986-227R	18	14-386-314	17	14-487-72	16	15-474-324	9
13-645-114	26	13-986-227RA	18	14-386-315	17	14-487-73	16	15-474-325	9
13-645-121	26	13-986-238G	18	14-386-316	17	14-487-74	16	15-474-326	9
13-650-125	28	13-986-238GA	18	14-386-317	17	14-487-75	16	15-474-327	9
13-650-126	28	13-986-245G	18	14-386-318	17	14-487-76	16	15-497-001	11
13-650-128	28	13-986-245GA	18	14-386-319	17	14-487-77	16	15-497-002	11
13-650-129	28	13-986-249G	18	14-386-320	17	14-487-78	16	15-497-003	11
13-650-142	26	13-986-249GA	18	14-386-321	17	14-487-79	16	15-497-004	11
13-650-143	26	13-986-249R	18	14-386-322	17	14-488-80	16	15-497-005	11
13-650-145	26	13-986-249RA	18	14-386-323	16	14-488-1	22	15-497-006	11
13-650-146	26	13-986-272G	18	14-386-324	16	14-488-2	22	15-497-007	11
13-650-147	26	13-986-272GA	18	14-386-325	16	14-488-24	22	15-497-008	11
13-650-164	26	13-986-428RA	18	14-386-326	16	14-490-1	22	15-497-009	11
13-650-165	26	13-986-428RRR	18	14-386-327	16	14-490-202	10	15-497-010	11
13-690-000	4	13-986-450R	18	14-386-328	16	14-490-205	10	15-497-011	11
13-690-002	4	13-986-450RA	18	14-386-329	16	14-512-28Q	21	15-497-012	11
13-690-003	4	13-986-450RR	18	14-386-330	16	14-910-311	4	15-497-013	11
13-690-004	4	13-989-702	20	14-386-331	16	14-910-312	4	15-497-015	11
13-873-10	1	13-989-704	20	14-386-332	16	14-910-314	4	15-497-016	11
13-873-11	1	13-989-706	20	14-386-333	16	14-910-317	4	15-497-017	11
13-873-12A	1	13-989-713	20	14-386-334	16	14-910-318	5	15-497-018	11
13-873-13	1	13-989-715	20	14-386-335	16	14-910-319	4	15-497-019	11
13-873-14	1	13-989-717	20	14-386-336	16	14-910-320	4	15-497-020	11
13-873-15	1	13-989-719	20	14-386-337	16	14-910-321	26	15-497-021	11
13-898-230	20	13-989-721	20	14-386-338	16	14-910-323	4	15-497-022	11
13-986-106A	18	13-989-723	20	14-386-339	16	14-910-324	20	15-497-023	11
13-986-111D	18	13-990-337	19	14-386-340	16	14-910-331	4	15-497-024	11
13-986-116D	18	13636XL30S	26	14-386-341	16	14-910-357	22	15-497-025	11
13-986-120	19	14-041-20Q	21	14-386-342	16	14-910-360	4	15-497-026	11

Stop + Science = Change



American Made Suppliers





Fisher Scientific

Part of Thermo Fisher Scientific



Fisher Scientific

For customer service, call 1-800-766-7000.
To fax an order, use 1-800-926-1166.
To order online: www.fishersci.com

For ownership of trademarks, see <http://www.fishersci.com/trademarks>

BN1021091
09_2336 11/09